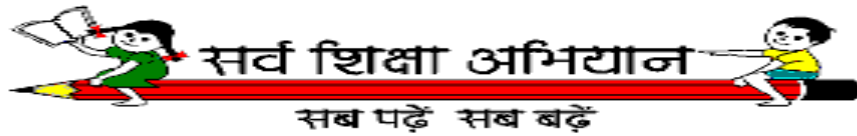


**MONITORING REPORT OF  
Tripura University  
ON SSA FOR  
TRIPURA STATE  
FOR THE PERIOD  
1<sup>ST</sup> October 2006 TO 31<sup>ST</sup> March 2007**

**DISTRICT COVERED**  
North Tripura



## Contents

### **Chapters:Page**

Introduction : 1

An Overview of North Tripura District: 7

Educational Scenario of North Tripura District : 10

Monitoring Outcome: 13

Executive Summary:32

Visual Documentation :Appendix A 38

AppendixB:39

# Chapter 1

## Introduction

### 1.1

(a) *Period of the study:* October 2006 – March 2007

(b) *Name of the State:* Tripura

(c) *Study Area:* North Tripura District.

### 1.2 Objectives:

- (i) Assessing the progress of implementation of approved plans in North Tripura District.
- (ii) Sample check of progress of eleven key outcome indicators.
- (iii) Verifying process and procedures undertaken for implementation of SSA.

### 1.3 Design of work:

The monitoring work consists of

- (i) Sarva Shiksha Abhiyan including National Programme for Education of Girls at Elementary Level.
- (ii) Mid- day meal scheme.
- (iii) Kasturba Gandhi Balika Vidyalaya Scheme.

### 1.4 Evaluation Issues according to Terms of Reference (TOR):

Level	Issues
<b>State Project Officer (SPO)</b>	Opening of Schools (both primary and upper primary); Civil work; Textbooks, School Grants; Teachers and Teachers Training; Teaching Learning Materials Grants; EGS & AIE/ NRBC/ RBC; Children With Special Needs (CWSN); National Programme for Education of Girls at Elementary Level (NPEGEL); Kasturba Gandhi Balika Vidyalaya (KGBV); District Information System for Education (DISE); Research and Evaluation; Functioning of VEC; Staffing at State and District Level;
<b>District Project Officer (DPO)</b>	Opening of Schools (both primary and upper primary); Civil work; Textbooks, School Grants; Teachers and Teachers Training; Teaching Learning Materials Grants; EGS & AIE/ NRBC/ RBC; Children With Special Needs (CWSN); National Programme for Education of Girls at Elementary Level (NPEGEL); Kasturba Gandhi Balika Vidyalaya (KGBV); District Information System for Education (DISE); Research and Evaluation; Functioning of VEC; Staffing at State and District Level;
<b>Block Resource Center</b>	Teachers and Teachers Training; EGS & AIE/ NRBC/ RBC; Staffing at BRC Level; District Information System for Education (DISE);

<b>(BRC)</b>	
<b>Cluster Resource Center (CRC)</b>	Teachers and Teachers Training; EGS & AIE/ NRBC/ RBC; Staffing at CRC Level; District Information System for Education (DISE);
<b>Village Education Committee (VEC)</b>	Opening of Schools (both primary and upper primary); Civil work; Textbooks, School Grants; Teachers and Teachers Training; Teaching Learning Materials Grants, EGS & AIE/ NRBC/ RBC; Children With Special Needs (CWSN); Natioal Programme for Education of Girls at Elementary Level (NPEGEL); Kasturba Gandhi Balika Vidyalaya (KGBV); District Information System for Education (DISE); Functioning of VEC; Mid- Day Meal Scheme; and others additional items to check during school visits by MI;
<b>School</b>	Opening of Schools (both primary and upper primary); Civil work; Textbooks, School Grants; Teachers and Teachers Training; Teaching Learning Materials Grants, Natioal Programme for Education of Girls at Elementary Level (NPEGEL); Functioning of VEC; Mid- Day Meal Scheme; Cohort study and others additional items to check during school visits by MI;
<b>Children</b>	Quality test, Mid- Day Meal Scheme and others additional items.
<b>Parents and Local people</b>	Mid- Day Meal Scheme and others additional items.

### *1.5 Selection of Study Area:*

- ✓ 25% schools of the North Tripura District are covered.
- ✓ Out of four (4) Districts of Tripura, North Tripura District is selected as per TOR.
- ✓ All blocks are covered in North Tripura District. All Nagar Panchayat in North Tripura District are also covered.
- ✓ All Block Resource Center (BRCs) are covered.
- ✓ 17 Cluster Resource Centers (CRCs) out of 81 CRCs are chosen for the study where most of the sampling schools belong.

### *1.6 Methodology:*

- ✓ At the very first step the MI collected the information in a Questionnaire on the basis of TOR from SPO, DPO, BRC, CRC, VEC and Schools.
- ✓ At the second step the collected information are verified at the randomly selected schools by direct interaction and group discussion with the teachers, students, parents and local people.
- ✓ After collecting all the information the MI analysed the data for monitoring purposes.

*1.7 List of Schools, EGS, CRC and BRC:*

SL No	Name of Block/NP	Name of School	Date of visit
1	Panisagar	Panisagar H.S. School	9-01-2007
2	Panisagar	Krishnapur H.S School	9-01-2007 18-01-2007
3	Kumarghat (NP)	Pabiacharra H.S School	9-01-2007 10-01-2007
4	Kumarghat (NP)	Pabiachhara Col. S.B. School	9-01-2007
5	Panisagar	Balakmuni S.B. School	9-01-2007
6	Panisagar	Pekuchara S.B. School	9-01-2007
7	Panisagar	Kabi Sukanta J.B. School	9-01-2007
8	Kailashar (NP)	Kailashar Girls High School	10-01-2007
9	Kumarghat	Darchui S.B School	10-01-2007
10	Kumarghat (NP)	Kumarghat Ward No.10 J.B. School	10-01-2007
11	Kumarghat (NP)	Chitagang Basti J.B School	10-01-2007
12	Kumarghat (NP)	Kumarghat Railway Col. S.B School	10-01-2007
13	Kumarghat	Krishnanagar B.H.High	10-01-2007
14	Kumarghat	Tegory Daspara J.B. School	10-01-2007
15	Kumarghat	Gokulnagar High School	10-01-2007
16	Gournagar	Tillabazar H.S School	11-01-2007
17	Gournagar	Jubrajnagar Col.Girls'High	11-01-2007
18	Gournagar	Irani High School	11-01-2007
19	Gournagar	Magululi S.B School	11-01-2007
20	Gournagar	Barkhala S.B School	11-01-2007
21	Gournagar	Uttar Hirachhara S.B School	11-01-2007
22	Gournagar	Belkumbari High School	12-01-2007
23	Gournagar	Rangrung(TE)S.B School	12-01-2007
24	Gournagar	Bagachhara J.B School	12-01-2007
25	Gournagar	Chinibagan S.B School	12-01-2007
26	Gournagar	Noonchhara J.B School	12-01-2007
27	Gournagar	Golakpur T.E.S.B School	12-01-2007
28	Gournagar	Halaichhara T.E.S.B School	12-01-2007
29	Kailashar (NP)	Vidyanagar H.S School	13-01-2007
30	Kumarghat	Kacharichhara S.B School	15-01-2007
31	Panisagar	Rowa High School	15-01-2007
32	Panisagar	Uptakhali Col.S.B School	15-01-2007
33	Panisagar	Kameswargoan Bh. Col. S.B	15-01-2007

		School	
34	Panisagar	Batarashi High School	15-01-2007
35	Panisagar	Saipulbuyal J.B School	15-01-2007
36	Kadamtala	Nadiapur S.B.School	16-01-2007
37	Kadamtala	Lalchhara High School	16-01-2007
38	Kadamtala	Pratyekroy H.S School	16-01-2007
39	Kadamtala	Bargul High School	16-01-2007
40	Kadamtala	Ichaitulgoan S.B School	16-01-2007
41	Kadamtala	Sonapur S.B School	16-01-2007
42	Kadamtala	Gobindapur S.B School	16-01-2007
43	Kadamtala	Kalachara H.S School	16-01-2007
44	Kadamtala	Amtilla V.Nangappa High	17-01-2007
45	Kadamtala	Churaibari High School	17-01-2007
46	Kadamtala	Jherjheri J.B School	17-01-2007
47	Kadamtala	Kurti Col. S.B School	17-01-2007
48	Kadamtala	Uttar Fulbari S.B School	17-01-2007
49	Kadamtala	Fulbari High School	17-01-2007
50	Kadamtala	Kadamtala H.S School	17-01-2007
52	Panisagar	Halflong Village High School	18-01-2007
53	Panisagar	West Radhapur S.B School	18-01-2007
54	Panisagar	Jubarajnagar High School	18-01-2007
55	Panisagar	Deochara Bhitargoal J.B	18-01-2007
56	Panisagar	Noagoan J.B School	18-01-2007
57	Panisagar	Betangi J.B School	18-01-2007
58	Panisagar	Tilthai Dobhanga S.B School	18-01-2007
59	Panisagar	Madhya Deochara Nabin S.B School	18-01-2007
60	Panisagar	Ganganagar H.S School	19-01-2007
61	Panisagar	Kameswar Mission Tilla J.B	19-01-2007
62	Panisagar	Dharmanagar T.E.J.B	19-01-2007
63	Panisagar	Kameswargoan Bh. Col. S.B	19-01-2007
64	Panisagar	Batarashi High School	19-01-2007
65	Panisagar	Bagbasa High School	19-01-2007
66	Kadamtala	Chandpur S.B School	19-01-2007
67	Kadamtala	Joynagar High School	19-01-2007
68	Panisagar	Latugoan S.B School	20-01-2007
69	Panisagar	Katauli J.B School	20-01-2007
70	Dharmanagar(NP)	Rajbari Girls' H.S School	20-01-2007
71	Dharmanagar(NP)	Dakshin Nayapara Kabi Sukanta J.B School	20-01-2007
72	Dharmanagar(NP)	Dharmapur S.B School	20-01-2007
73	Dharmanagar(NP)	Nayapara Higher Secondary School	20-01-2007
74	Dharmanagar(NP)	Padampur H.S. (+2Stage) School	20-01-2007
75	Pecharthal	Pecharthal H.S School	9-01-2007

76	Kumarghat	Rajnagar S.B.School	22-02-2007
77	Kumarghat	Prakash Chow.Para S.B	22-02-2007
78	Kumarghat	Makai Chow. Para S.B.	22-02-2007
79	Kumarghat	Noydrone High School	22-02-2007
80	Kumarghat	Dudhpur High School	22-02-2007
81	Kumarghat	Betchhara (Raitwissa) H.S	22-02-2007
82	Kumarghat	Balichhara S.B School	23-02-2007
83	Kumarghat	Laljuri High School	23-02-2007
84	Kumarghat	Paschim Demdum S.B.	23-02-2007
85	Kumarghat	Dhansingh Memorial (Kanchanbari) H.S.	23-02-2007
86	Kumarghat	East Kanchanbari High	23-02-2007
87	Kumarghat	Saidarpar S.B School	23-02-2007
88	Kailashahar (NP)	Netaji Vidyapith H.S.School	24-02-2007
89	Kailashahar (NP)	Kacharghat High School	24-02-2007
90	Kailashahar (NP)	Kailashahar Girls' High School	24-02-2007
91	Kailashahar (NP)	Laxminarayan Bari J.B School	24-02-2007
92	Pecharthal	Laxman Charra R.C.J.B	25-02-2007
93	Damcharra	Kacharichhara S.B School	25-02-2007
94	Damcharra	Punnyaram Para J.B School	25-02-2007
95	Damcharra	Piplachhara S.B School	25-02-2007
96	Damcharra	Paiza Govt. S.B. School	25-02-2007
97	Damcharra	Bhalukchhara S.B. School	25-02-2007
98	Damcharra	Damchhara H.S. School	25-02-2007
99	Dasda	Kanchanpur J.B School	27-02-2007
100	Dasda	Chandra Mohan Baidya Para J.B	27-02-2007
101	Dasda	Bakra Debbarma Para J.B	27-02-2007
102	Dasda	Sadhaim Para J.B	27-02-2007
103	Dasda	Rabindranagar High School	27-02-2007
104	Dasda	Block Tilla S.B. School	27-02-2007
105	Dasda	Suknachhara S.B.School	27-02-2007
106	Dasda	Laxmipur (Dasda) S.B School	27-02-2007
107	Dasda	Kanchanpur Col. Girls' H.S.	27-02-2007
108	Jampui Hills	Vanghmun S.B School	28-02-2007
109	Jampui Hills	Fuldaongsei S.B School	28-02-2007
110	Jampui Hills	Moheshwar R.M.Model S.B.	28-02-2007
111	Jampui Hills	Sabual High School	28-02-2007
112	Jampui Hills	Bangla S.B School	28-02-2007
113	Jampui Hills	Jampui H.S. school	28-02-2007
114	Dasda	Govt. Eng. Med. High School	01-03-2007
115	Dasda	Ujan Machmara S.B.School	01-03-2007
116	Dasda	Laljuri H.S School	01-03-2007
117	Dasda	Uttar laljuri Joysree H.S School	01-03-2007
118	Dasda	Santipur High School	01-03-2007
119	Dasda	Kernajoy C.P.High School	01-03-2007

120	Dasda	Urichhara Subhashnagar S.B.	01-03-2007
121	Dasda	Doptachhara S.B School	01-03-2007
122	Pecharthal	Santinagar Chantilla J.B	02-03-2007
123	Pecharthal	Santipur PLT S.B.	02-03-2007
124	Pecharthal	Akshaymani Dhanicharra High	02-03-2007
125	Pecharthal	Ledrai Dewan H.S.School	02-03-2007
126	Dasda	Santipur J.B School	02-03-2007
127	Dasda	Anandabazar High School	02-03-2007
128	Dasda	Wainsoukta Para J.B School	02-03-2007
129	Dasda	Ratanjoy Para J.B. School	02-03-2007
130	Dasda	Titanjoy R.C.P.J.B. School	02-03-2007
131	Dasda	Pranchandra Para J.B	02-03-2007
132	Dasda	Setudwer S.B School	02-03-2007
133	Dasda	Subal Para S.B School	02-03-2007

<b>Name of the Block/NP</b>	<b>Name of CRC</b>
KADAMTALA	1.Baghan H.S. School
	2. Pretyekroy H. S. School.
	3.Churaibari H.S. School
	4.Algapur High School.
	5.Brajendranagar H.S. School
	6.Ragna High School
	7.Kalacharra H.S.School.
DHARMANAGAR	8.Chandrapur Govt. H.S. School
	9.Padmapur H.S. School
KAILASHAR	10. Kailashar Girls High School
DASDA	11.Durgaram R.P.H.S School
	12.Ananda Bazar High School
PECHARTHAL	13.Nabincherra High School
	14.Pecharthal H.S.School.
	15.Akshomani (Dhanicherra) High School
PANISAGAR	16.Krishnapur H. S. School.
	17.Ganganagar H.S. School
	18.Rowa High School
KUMARGHAT	19.Kumarghat Girls H.S School
DAMCHARRA	20.Piplacharra S.B School
	21.Bhallukcherra S.B School

## *1.8 Chapters ahead.....*

Chapter-II: An Overview of North Tripura District

Chapter-III: Educational Scenario of North Tripura District

Chapter-IV: Monitoring Outcome

Chapter-V: Executive Summary

# **Chapter -II**

## **An Overview of North Tripura District**

### **2.1 Historical Background**

Tripura State is a small hilly State situated in North Eastern part of India. For easy monitoring and controlling as well as implementation of various Development Schemes in the interest of the people, four Districts were created in Tripura State- West, South, North and Dhalai District. North Tripura District was come into existence in the year 1970 as 3<sup>rd</sup> District of the state with a geographical area of 2018.05 square kilometers. The District was bounded by Bangladesh (North and South), Assam and Mizoram State (East) and Dhalai District (West).

### **2.2 Natural Features**

Natural feature of the district is very beautiful. Most of the areas of the District constitute hills and small hillocks. In summer maximum temperature is 37 Degree Celsius and minimum is 27 Degree Celsius and in the winter maximum temperature is 27 Degree Celsius and minimum is 07 Degree Celsius. The principal hills JAMPUI, SHAKAN, THLANGSANG and rivers are DEO, MANU and JURI.

### **2.3 Cultural Features**

A mixed culture is developed between tribal and non-tribal people though their remain sharp differences in respect of religion, Caste, creed, race, language, food-habits, dresses and also their aspects of life. Among the tribal population, there are various communities such as Tripuri, Reang, Chakma, Halam and Lusai in the District. About 90% of the populations of the district speak Bengali. Kok Barak is the second important widely spoken tribal language.

## 2.4 Demographic Features

Since 1971 Census of India being conducted under the guidance of Director of Census Operation of the State, so North Tripura District came under Census Operation since 1971. According to Census Report-2001, total population in this District is 590913. Which is 18.47% of total population of Tripura. Among them male is 302946 and female is 287967. Decadal growth rate of the State and other Districts with sex ratio and population density is given in the following table-

State/District	Percentage of Decadal growth rate		Sex Ratio		Density of Population per Sq/KM	
	1981-91	1991-2001	1991	2001	1991	2001
West	32.53	18.29	944	953	247	505
South	40.30	6.10	951	949	229	243
North	30.86	26.44	943	952	222	281
Dhalai	33.69	10.79	931	940	125	139
State	34.30	15.74	945	950	263	304

Source: - Census report-2001

The table depicted that the decadal growth rate of North Tripura District is

higher than the other districts of the State i.e. 26.44%. According to sex ratio the district is in second position among the other districts of the State. District rank according to density of population per Sq/KM is third.

According to Village Plan total population in this District increased 11.58% from the total of 2001 census report, S.C population increased 1.64% but ST population is slightly decreased. The percentage of ST population was found in the year 2001 in census report 25.46% but the Village Plan 2006 shown that it is 23.41%. It is excepted that the decrease in ST population is due to migration and shifting cultivation.

Population	All community	SC	ST	OBC	Minority
Male	342855	54088	81251	102639	48322
Female	325472	49925	7525	98144	46546
Total	668327	104013	156502	200783	94868

% of Total	15.56	23.41	30.04	14.19
------------	-------	-------	-------	-------

Source: - Village Plan 2006.DPO, North Tripura District

## 2.5 Socio Economic Features

Agriculture is the main economical source of the district. The people are mostly depending own traditional method of farming. A major part of tribal people engaged in shifting cultivation in their own indigenous method. The main crops are rice, potato, pulse, orange, ginger, groundnut etc. According to Socio Economic Review, North Tripura District, 1999-2000, 23.47% out of total manpower engaged in agricultural activities.

5.50% engaged in forestry, fishery, plantations and allied actives.

## 2.6 Transport and communication

The National High Way No.44 called the lifeline of Tripura passes through the District. The North Eastern Railway runs through the District and reach up to Manu in Dhalai District. The main sources of communication are Busses, Lorries, jeeps, Copter and three wheelers.

## 2.7 Banking System

Total 37 commercial banks operated in the North Tripura District such as SBI, UBI, Commercial Bank. Co-operative Bank etc.

## 2.8 Medical Facilities

The medical facilities are being provided mainly by the Health and Family Welfare Department of the State Government and Private individuals.

## 2.8 Tourist Spot

The District has several tourist spot located in different blocks. Among them UNOKUTI and JAMPUI have taken in the international tourist map.

## 2.8 Administrative Set-Up

The District Administration is headed by the District Magistrate & Collector (D.M. & Collector). He is the chairman of the District Level Education Committee (DLEC). In this District there are three Sub-Divisions and each Sub-Division headed by the Sub-Divisional Magistrate (SDM). Each Sub-division is divided in to Blocks according to area and population. Each block headed by the Block Development

Officer (BDO). In a block there are so many Gram Panchayat (GP) and Nagar Panchayat (NP). In each GP there is one Pradhan and in NP there is Chairpersons are endowed with power to function as head of the body.

## 2.9 Literacy

A provisional Report received from the Indian Statistical Institute, Kolkata through Zilla Saksharata Samiti, North Tripura male literacy rate is 83.10%, female-72% and total 78% up to 31<sup>st</sup> December 2005. So it is increased the level of literacy rate according to Census, 2001 Male 3.01%, Female 6.27% and total 4.90%.

# Chapter -III

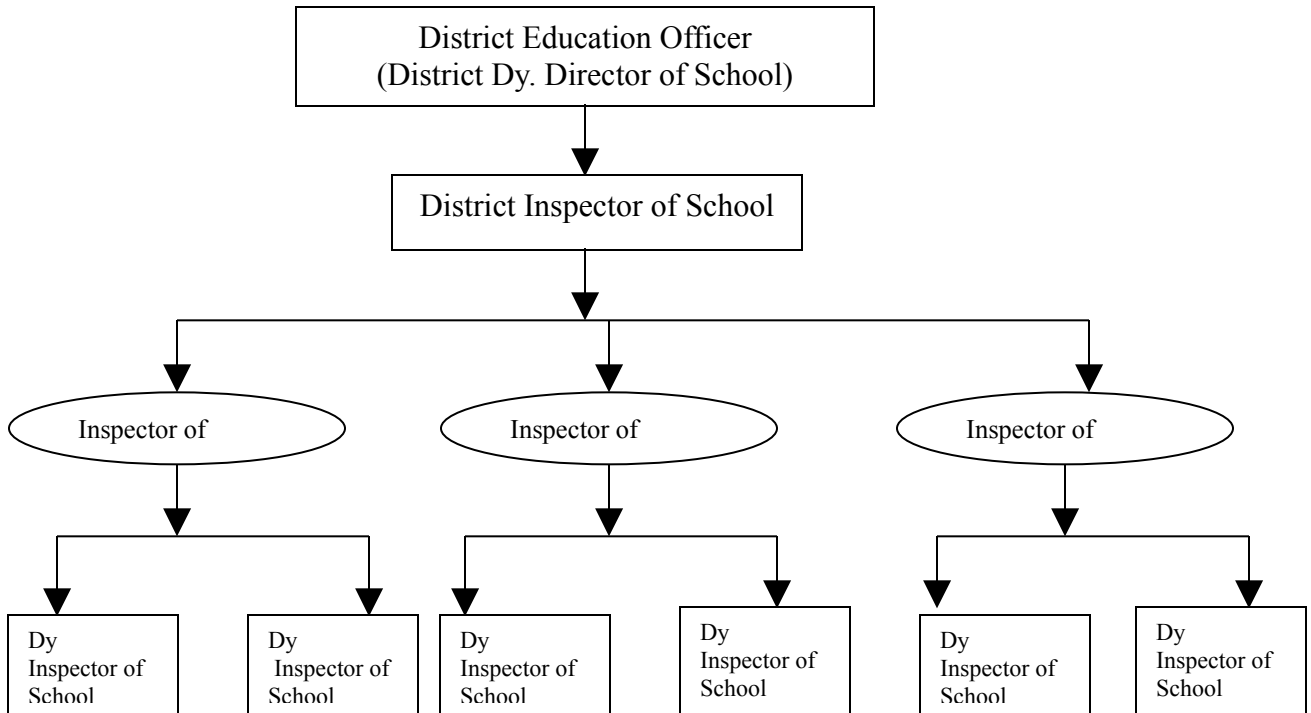
## Educational Scenario of North Tripura District

### 3.1 Education System

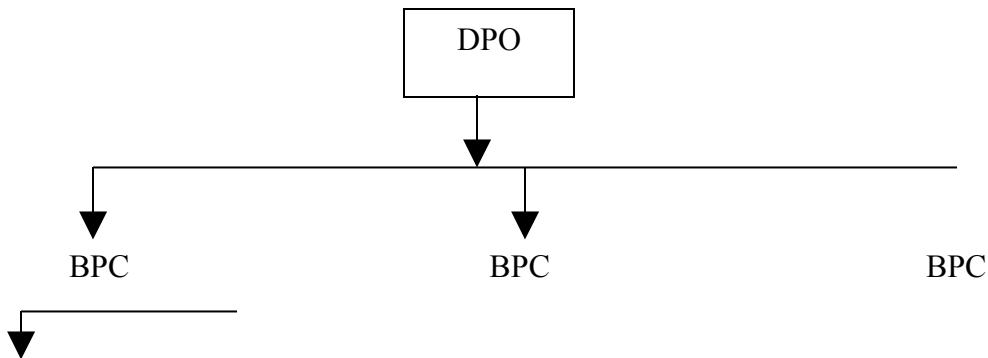
In North Tripura, Pre Primary Education is imparted in the 'Anganwadi' and 'Balwadi' centers to children in the age group 3-6 years. Five years of Primary School Education i.e. Class-I to Class-V, three years of Middle School Education i.e. Class-VI to Class-VIII, two years of Secondary School Education i.e. Class-IX to Class-X, two years of Higher Secondary Education i.e. Class-XI to Class-XII, and three years of Higher Education leading to the first degree is prevalent in the District.

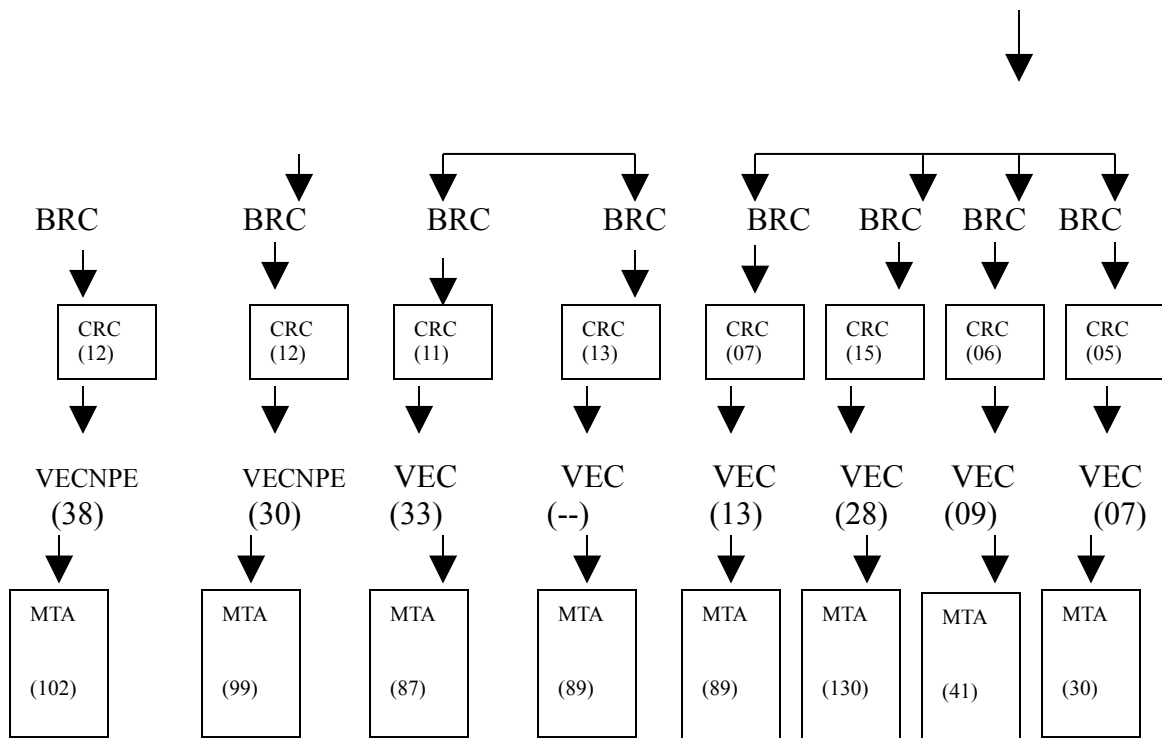
To achieve the objectives of Sarva Shiksha Abhiyan , the SSA mandate is to make the delivery mechanism of primary education participatory and democratic. Therefore a scrutiny of the organizational structure in Tripura becomes mandatory. As indicated by the charts given below. There is a lack of convergence between the existing organizational structure and SSA structure. This will require farther efforts so that the structure becomes convergent.

### 3.2 Educational Administrative Set-up



### 3.3 SSA Monitoring Set-up





In North Tripura District there are 266 Government and Government Aided Primary schools including TTAADC area and 264 Upper Primary Schools having attached Primary sections and 119 High and Higher Secondary Schools having Upper Primary Sections in the District. Ratio of Upper Primary Schools to Primary Schools 1:2.

### 3.4 Educational Indicators

#### 3.4.1 Enrolment

Year	2003-04			2004-05			2005-06			2006-07			2007-08		
	B	G	T	B	G	T	B	G	T	B	G	T	B	G	T
Primary	38703	36501	75204	41350	38169	79519	44525	41100	85625	46997	43390	90387	60000	50000	110000
Upper Primary	16898	16003	32901	17103	16026	33129	18102	17667	35769	18931	17475	36406	19000	18000	37000

#### 3.4.2 GER/NER

Year	2003-04		2004-05		2005-06		2006-07		2007-08	
	Boys	Girls	Boys	Girls	Boys	Girls	Boys	Girls	Boys	Girls
GER	128	129	123.5	121.3	126.6	124.6	135	133.5	110	116
NER	95	95	98	98.9	97	98.86	96	96.15	100	100

### 3.4.3 Drop-out rate

Year	2003-04		2004-05		2005-06		2006-07		2007-08	
Drop-out	Boys	Girls	Boys	Girls	Boys	Girls	Boys	Girls	Boys	Girls
	23.5	34.6	17.56	15.25	16.05	16.45	12.72	12.01	8.5	9

### 3.4.4 Completion Rate

Year	2004-05	2005-06	2006-07	2007-08
Completion Rate	35.99	40.98	45.75	69

### 3.4.5 Out of School Children

Year	2004-05			2005-06			2006-07			2007-08		
	B	G	T	B	G	T	B	G	T	B	G	T
6-11 age group	407	374	781	844	752	1596	156	190	346	100	100	200
11-14 age group	480	447	927	845	729	1574	261	279	540	200	200	400

## Chapter -IV

## Monitoring Outcome

## A. Opening of Schools (both primary and upper primary)

**A-i** As per report of SPD Office in Tripura 211 schools were sanctioned in the current financial year. All schools are opened. District wise number of schools is given in TABLE-A.1. Table-A.1. depicted that *in North Tripura there are 15 sanctioned schools and all schools are opened.* The updated data by DPO in respect of the district visited by MI is same as SPD. In North Tripura Block wise distribution of opening of schools is given in Table-A.2.

**A-ii** As per report of DPO Office in North Tripura land for construction of all schools have acquired (Table-A.2). Among fifteen five schools are visited by MI, all schools are functional.

**A-iii** As per report of DPO Office in North Tripura all VEC have received funds for construction of the schools. Sampled schools also reported the same.

**A-iv** Stage of construction is given in Table-A.2.

**A-v** District wise number of post sanctioned and post appointed for the new schools is given in Table-3. The table shows that all sanctioned post are filled.

**A-vi** Block wise number of post sanctioned and post appointed for the new schools is given in Table-2. The table shows that all sanctioned post is filled.

**A-vii** The Inspector of School (I/S) provided tables, branches, blackboard etc. to the new primary and upper primary schools. They do not provide any cash to the school.

**A-viii** Guidelines were provided the schools for civil works.

## B. Civil Works

**B-i** In North Tripura District there is fifteen primary schools and one upper primary school sanctioned. Among them five schools are visited. There are seventy-one sanctioned additional classrooms for upper primary schools. Among them sixteen schools were visited. Records of the additional classroom are given in Table-B.1. The sanctioned number of boundary wall is sixteen, among them twelve boundary wall were checked. Construction status of boundary wall is given in Table-B.1. Twenty-seven CRC building were sanctioned in North Tripura District and thirteen CRC buildings' construction site were visited. *Sixteen drinking water facility and twenty-seven toilets are sanctioned but records are not available in SPO Office and DPO Office because these parts are done by Rural Development Department.*

**B-ii** Monitoring team also covered all categories of civil works. Civil works were found to be according to proposal. Most of the civil works i.e. 84.44% is complete (Table-B.1).

**B-iii** SMCs/ VECs do not have any trained technical person for execution of civil works.

**B-iv** Community manual for civil works has been prepared and it is available with VEC.

**B-v** All new schools also constructed ramp.

**B-vi** VECs are keeping separate account of funds and materials for construction.

**B-vii** A Technical person has been appointed for supervision of civil works at District level. Not only this every school have an implementing officer to maintain and check the works of the school.

**B-viii** District level technical person visit the construction site several times at the time of completion of work up to foundation level, lintel level, roof level depending on the type of civil works (Table-B.2).

**B-ix** *In North Tripura there was no convergence with Swajaldhara and Total Sanitation Campaign (TSC).*

**B-x** District Rural Development Agency (DRDA) constructs drinking water facilities in schools.

**B-xi** *DPO provide funds from SSA for toilet, drinking water and kitchen shed to the Block Development Office (BDO) but records are not available.*

**B-xii MI's Impression: -**

In 63.04% of sampled schools civil works is good and 19.56% of schools civil works is medium (Table-B.2).

**B-xii** For Monthly Monitoring, at SPD level there is a State Civil Coordinator for obtaining physical status report through different formats. Civil works manual has been conveyed to concerned officials to ensure quality of civil works.

## C. Textbooks

**C-i** DPO Office reported that textbooks have been distributed (Table-C.1).

**C-ii** The textbooks were actually received and distributed in the district in the last week of January 2007.

**C-iii** *During the field visit of the MI it was found that all sampled schools have not received all books for distribution to the students within one month of opening of the school. Because complete sets were not available.*

## D. School Grants

**D-i** District wise in primary and upper primary school grants as approved for the current financial year is given in Table-D.1. The guidelines have been issued to the schools.

**D-ii** Block wise distribution of school grants according to approved grants, released grants and receipt grants in primary and upper primary schools for the current financial year is given in Table-D.2.. The table shows that date of release are not given.

**D-iii** DPO has not made centralized purchases for schools out of the school grant.

**D-iv** *The actual date of receiving school grants was not available in DPO Office.*

**D-v** *Around 95% of school grants for the last years are utilized. Also current years (2006-07) school grants was also utilized (Table-D.3). Out of the sampled school 58.56% of schools has received school grants. 11.71% of schools have not received school grants. 29.73% of school information is not available. Percentage of utilization of school grants is that 47.75% schools have not utilized and 22.53% of schools have utilized the grant (Table-D.4)*

### **D-vi Nature of utilization**

*Among all the sampled schools in the current financial year 22.53% of schools utilized their school grants on Utensils, filter, glass, knife, gum, display board, football, carom, repairing, dishes, science equipments, colour etc (Table-D.3).*

## E. Teachers and Teachers Training

**E-i** As per the report of SPO office there are no additional teachers sanctioned under SSA in primary and upper primary schools.

**E-ii** The mode of recruitment of the teachers is that the BPC (Block Project Coordinator) invites application through paper publication. After interview the eligible candidates list is prepared and approved by BLEC (Block Level Education Committee)

and DLEC (District Level Education Committee) respectively. Appointment letters are issued by BPC for one year.

**E-iii** VEC/Panchayat etc. is not empowered to make decentralized recruitment of teachers.

**E-iv** Sanctioned number of teachers for the schools is not available. *For all sampled schools in North Tripura District the average number of teachers in primary school is 6.34. According to teachers attendance rate 62.16% of school is very good, 23.42% of school is good, 9.91% is medium and 0.90% is poor (Table-E-2). Here one point to note is that teachers who are engaged in training and other duties are not included in the calculation of teachers' attendance.*

**E-v Rapport between children and the teachers-**

*Biting of students by teachers is not an expectable practice in most of the schools visited by MI. Injuring of students for biting was not reported in any of the schools.*

**E-vi Teachers' Training-**

*As per report of the SPO in North Tripura District target number of in-service teachers for training is 4178 and actual number is 3900 (Table-E.3).*

*As per report of the DPO, the target number of in-service teachers for training is 3520. Among them actual number of teachers having training is 2575 (Table-E.4). For teachers training a training calendar is maintained. The venues of training are BRC, DIET and IGNOU. Content and module for training was prepared by SCERT. The trainers are Master Trainers and Faculty members of DIET. The educational qualification of the Master Trainers must be Post Graduate teachers having B.Ed.*

**E-vii** *In North Tripura District 30-days orientation training programme is not conducted in 2006-07. Most of the trainings are 10-days, 15-days and 20-days for in-service teachers.*

**E-viii** *As per report of SPO in North Tripura District the actual number of teacher for refresher training of 60-days is 222.*

*As per report of DPO in North Tripura the target number of newly recruited teachers training of 60-days is 571 and actual number trained is 425. The venue of training is BRC Hall and DIET. Post Graduate teachers having B.Ed. are the Master trainers.*

**E-ix** *During the field visit of the observers of MI to the sampled schools, teachers training in last academic year (1<sup>st</sup> Jan.2006 to 31<sup>st</sup> Dec. 2006) is shown in Table- E.5 and*

E.6. According to teachers training 11.11% of schools are good, 30.30% schools are medium, 26.26% of schools are poor and 28.28% of schools are very poor. Four schools are found beyond norm i.e. teachers training of last academic year is above 100%.

**E-x Satisfaction level of training-**

*Observing classroom transaction and other academic actives of the teachers could have assessed whether the training imparted has been useful. However, the visit period was such that the schools were not totally active in academic activity. Therefore a positive impression was not created regarding level of training and its satisfactory translation in classroom environment.*

**E-xi Role of BRCs and CRCs –  
Academic support**

MI also covered all BRC coordinators, all BRCs are actively engaged to improve teachers' quality, students' quality and strengthen their respective VECs. They have organized teachers training (in service/induction training for new recruits/training of untrained teachers). They conduct 10-days, 15-days, 20-days training for different type of teachers.

*The MI covered 21% of CRC i.e. 17 CRCs out of 81 CRCs in North Tripura District. CRC organized short course training conducted by BRC. Recently CRCs have taken steps to improve teacher performance and children's learning. However, the CRCs complained of lack of staff and lack of integration into the SSA frame.*

**Supervision**

In the last academic year i.e. 1<sup>st</sup> Jan. 2006 to 31<sup>st</sup> Dec. 2006 the expected number of school visit to be made by BRC is 15 numbers of per BRC. In this visit BRC doing awareness programme, class teaching, SSA fund related issues etc.

Each CRC visits 4 schools in a month and in the last academic year i.e. 1<sup>st</sup> Jan. 2006 to 31<sup>st</sup> Dec. 2006 the expected number of school visit to be made by CRC was 48.

**Qualitative aspects**

In this visit BRCs also conducting model lessons in classrooms themselves and they helped teachers to teach certain difficult topics in a better way. They conducted random test of children.

The CRCs carry out during the visits activities like academic motoring, financial scrutiny and civil works evaluation.

*But some BRCs and CRCs expressed their dissatisfaction. According to them for more functional BRC and CRC, it is urgently required that appointments be made of BRP and CRP who have a minimum professional and academic training. Further, time-to-time meetings will be required to be held for better monitoring. They further complained that difficult and interior schools are difficult to monitor without timely logistic support from higher authorities.*

### Role of DIET

*DIETs in North Tripura District are not extending sufficiently their cooperation to the BRCs and CRCs in the field of capacity building, academic supervision and guidance, action research and monitoring of BRC/CRCs.*

#### **E-xii Quality Coordinator at SPO**

No quality coordinator was appointed.

### **F. Teaching Learning Materials (TLM) Grants**

**F-i** The total number of eligible teachers to receive TLM (Teaching Learning Material) Grants District wise is shown in the following table-

**Table: Number of District wise Eligible Teachers for TLM**

District	No. of teachers received TLM grants(Teachers Grant)
West	14800
South	6829
North	3951
Dhalai	2378
Total	27958

Source: -SPD office, SSA Rajya Mission-Tripura

As per report of SPO the actual date of release of TLM grant is 15<sup>th</sup> June 2006 in the entire State.

**F-ii** Total number of teachers received TLM Grants and details of utilization in Block wise is shown in the following table-

**Table: Block wise Distribution of TLM Grants**

BLOCK	NO. OF TEACHERS RECEIVED TLM GRANTS	Details of its utilization	Any specific instruction-Y/N
Gournagar	815	Purchased materials for class room activities	Yes
Kumarghat	643	Do	Yes
Panisagar	733	Do	Yes
Kadamtala	876	Do	Yes
Pech arthal	340	Do	Yes
	619	Do	Yes
	158	Do	Yes
	180	Do	Yes
	<b>4364</b>		

Source: - DPO Office, North Tripura

As per report of DPO the actual date of release of TLM grant is 22<sup>nd</sup> June 2006 in the entire district.

### **F-iii Date of receipt of TLM Grants –**

*Up to 2<sup>nd</sup> March 2007 i.e. when MI team visited the schools, there were 56.76% schools that have received school grants, 15.31% schools have not received and for 27.93% schools information are not available. Not available means they could not tell the date of receipt TLM (Table-F.1&F.2). According to them upper primary Head teacher, VEC secretary, chairpersons know i.e. teachers are not aware about teachers grant.*

### **F-iv Nature of utilization of TLM Grants -**

TLM grants were used for procuring the teaching learning materials such as- Harmonium, Dictionary, Grammar books of English and Bengali, Chart, Map, Picture, Chalk, Duster, carom, pencil, school bell, calculator, stationary goods etc (Table-F.1).

**F-v Display of TLM -**

*Discussion with teachers and observation MI found that teachers view is that they use TLM in the classroom regularly. But at the date of visit by MI team only one school a teacher use TLM. The name of the school is Chandra Mohan Badya Para J.B. School and teachers name is Sri Punyaban Chakma.*

**F-vi Utilization of TLM by children -**

At the date of visit MI team did not find any student using TLM.

**F-vi Training of Teachers to use TLM -**

In North Tripura District there are 67.67% of schools teachers (out of 111 observed schools) getting several trainings (last academic year), like 10-days, 15-days, 20-days and 60-days training. In this training some classes give training on use of TLM. One copy of such programme is given in appendix.

**G. EGS & AIE/NRBC/RBC**

***G-i District wise EGS center-***

In the previous year (1<sup>st</sup> Jan.2006 to 31<sup>st</sup> Dec. 2006) total number of EGS center in Tripura was 1979. Among them in West Tripura 624; in South Tripura 320; in North Tripura 532 and in Dhalai 441 EGS centers were located.

***G-i Block wise Distribution of EGS center-***

In previous year there were 532 EGS center in North Tripura District. Among them 441 EGS centers have been discontinued from 01-01-2007.41 EGS center were converted to special AIE for short course and 50 EGS centers are to be upgraded to primary school. Since the work is in initial stage monitoring work was not carried out here.

**G-ii** In North Tripura District there were 5457 students upgraded to the mainstream. Among them 2079 from Gournagar block, 884 from Kumarghat block, 719 from Pecharthal block, 529 from Damcharra, 467 from Dasda, 424 from Kadamtala, 311 and 44 from Panisagar and Jaimpui respectively.

**G-iii Training for EVs-**

A three days short course-training programme was conducted at BRC on basic structure of EGS.

**G-iv The EVs are not given regular academic support by the BRC/CRC.**

In district level there is no District Coordinator for EGS. In current year 50 EGS center up gradation proposals was sent. SPO has issued necessary instruction to the DPO with reference to up gradation of EGS center to primary schools but fund was not released. Land is been identified for construction of the upgraded primary school.

**H. Children With Special Needs (CWSN)**

**H- i** As per report of DPO in North Tripura District number of identified children is 461 among them enrolled children is 383 and the children provide aids and application is 112. Block wise identified children; enrolled children and distribution of aids and application is shown in the following table-

**Table: Number of Disabled Children**

Block	No. of schools having ramps	Children with special needs (CWSN)		
		Identified children	Enrolled children	No. of children provides aids and application
Gournagar	26	79	60	18
Kumarghat	30	43	26	08
Panisagar	20	72	46	14
Kadamtala	22	62	40	15
Pechartha	18	39	38	10
Dasda	17	112	119	25
Damcharra	09	20	20	08
Jaimpui	10	34	24	14
Total	152	461	383	112

Source: - DPO Office, North Tripura

*In North Tripura District there are 461 disabled children. Among them, 6-11 years enrolled girls are 99 and boys 165. 11-14 years enrolled girls are 47 and boys 65. They are visually impaired (VI); hearing impaired (HI); speech impaired (SI); orthopedically impaired (OI); mentally retarded (MR) and others have cerebral palsy (CP); multiple disability (MD) and learning disability (LD). Orthopedically impaired (OI) children are highest in North Tripura District. 74 disabled children are never enrolled they are of VI; SI; MD; OI and MR category.*

## I. National Programme for Education of Girls at Elementary Level (NPEGEL)

As per report of SPO total NPEGEL in Tripura is seven. Among them in North Tripura one NPEGEL was started during 2006-07. The NPEGEL center is situated in Piplacharra S.B.School in Piplacharra Gram Panchayat, Damcharra Block. Which is ADC Block. The school is situated on the roadside.

*Sanctioned amount by the state for NPEGEL is 6.04 Lack per school. Release fund is 1.50 lack up to 27-02-2007. The school has eight classrooms and present status of the room is good. Source of drinking water facility is ring well and the school has a pucca toilet.*

Total number of girls is twenty. The age group of these girls is 11-16+. All belong to BPL families. The students are overage girls, dropout girls and low achievement girls. There is training for tailoring for all the girls. The time period for teaching is 3.15 P.M. to 4.15 P.M. every day in a week except Sunday. Bicycles are also to be provided to the girls when their residence is above 2 K.M. So far the sewing machines are not purchased. One lady teacher is engaged for vocational training on contract basis. Monthly honorarium is Rs.1800/-.

## J. Kasturba Gandhi Baliaka Vidyalaya (KGBV)

As per report of SPO total KGBV in Tripura is seven. Among them in North Tripura one KGBV was started during 2006-07 in a rented house. The land for construction of KGBV has been identified. District wise distribution of KGBV is given in the following table –

**Table: District wise Distribution of KGBV**

District	No. of KGBV	
	Sanctioned	Operational
West	-	-
South	4	4

North	1	1
Dhalai	2	2
Total	7	7

Source: -SPD office, SSA Rajya Mission-Tripura

*In North Tripura District KGBV was started in October 2006. The KGBV is situated in Damcharra R.D Block, Kacharicherra Gram Panchayat. The block is educationally backward block, not only this female literacy rate is low and gender gap in literacy is more than the national average.*

Total students in KGBV are twenty, all from Kanchanpur Sub-Division. Age group of the students is (11-14) years. All are ST girls. Nearest school of the KGBV is Paiza Govt. S.B School, Kacharicherra. Distance from Block Head Quarter is 4 K.M.

The school timing is 10.45 A.M. to 4.30 P.M. All are studying in Paiza Govt. S.B. School. Teaching staff of the school is five among them two are female teachers.

In KGBV no residential teacher is there. The Head teacher of Paiza Govt. S.B. School was supervising the KGBV. School uniform, shoes and socks, books, pen and pencils and other stationeries, cosmetics and toothpaste etc. are provided to the students.

All students stay in the hostel. The parents are allowed to meet their daughters only on the appointed days and time.

In a week meal programme is that-

1. Every day in the morning they get one-cup tea with biscuits or muri.

2. At 9 A.M. they take meal and 7 P.M. they take meal.

3. They get fish with rice two times in one day per week.

4. They get egg with rice one time three days per week.

5. Meat with rice one time one day per week.

6. In others days they get vegetables, dal and rice.

At the day of visit (27-02-2007) by MI the menu of food item was dal, dry fish and rice. The environment of KGVB is clean, hygienic and safety. The source of water is tap water.

## K. District Information System for Education (DISE)

### K.i Overview of DISE

State maintained DISE (District Information for Education) data from 2003-04. Base year for DISE data is 1<sup>st</sup> October to 30<sup>th</sup> September. State maintains record of DISE data in a systematic manner. To maintain DISE data properly state has taken several steps. The staffing pattern of DISE is shown below: -

District	Staff Position	Qualification	Length of service
West	1. Programmer-1	1.BE (Electrical) 2.Diploma in Programmer	Three years
	2. Data Entry Operator-1	1.M.A in Bengali. 2.DTP Certificate course.	Two years
	3. Temporary-4	1.DTP Certificate course.	Nil
South	1. Programmer-	Nil	Nil
	2. Data Entry Operator-1	1.Graduate. 2.Diploma in Computer Application.	Three years
	3. Temporary-1	1.Graduate. 2.DTP Certificate course	Nil
North	1. Programmer-1	1.Graduate. 2.Diploma in Computer Application.	Three years
	2. Data Entry Operator-1	1. H.S.Passed. 2. Diploma in Computer Application.	One years
	3. Temporary-1	1.DTP Certificate course	Nil
Dhalai	1. Programmer-	Nil	Nil
	2. Data Entry Operator-2	1.Madhyamik Passed 2.Diploma in Computer Application.	Two years
		1.B.A. Passed 2.Diploma in Computer Application.	One years
	3. Temporary-3	1.Diploma in Computer Application.	Nil

### ***K.ii Status of DISE data during 2006***

The time schedule drawn up by the state for DISE 2006 activity as mentioned below: -

Activity	Period	Days
1. Reference date:	30 <sup>th</sup> September 2006	
2. Workshop & Supply of Data Capture Format (DCF) by DEOs to Block Project Co-ordinator/ Resource Co-ordinator:	25 <sup>th</sup> September 2006	
3. Supply of DCF to HM/ AHM/ TIC	9 <sup>th</sup> October 2006	1 day
4. Collection of data (filling up of DCF by HM/ AHM/ TIC) to be treated as DISE day	10 <sup>th</sup> October	<b>DISE Day</b>
3. Submission of DCF to CRC by HM/ AHM/ TIC:	11 <sup>th</sup> -13 <sup>th</sup> October 2006	3 days
4. Period of data submission from CRC to BRC:	14 <sup>th</sup> - 20 <sup>th</sup> October 2006	7 days
5. Period of data submission from BRC to District Project Co-ordinator office:	21 <sup>st</sup> - 27 <sup>th</sup> October 2006	7 days
6. *Submission of Compiled DISE data from District Office to the office of State Project Director	25 <sup>th</sup> November 2006	

Source: - SPD Office (SSA Rajya Mission Tripura)

## I. RESEARCH AND EVALUATION

*State and District authorities reported no major research and evolution activity.*

## M. FUNCTIONING OF THE VEC

**M.i** In Tripura total VEC is 1040, among them 513 is situated in Non-ADC area and others in ADC area. District wise distribution of VEC are shown in the following table-

District	Number of VEC constructed		Total
	Non-ADC	ADC	
West	215	185	400
South	157	167	324
North	106	79	185
Dhalai	35	96	131
Total	513	527	1040

Source: - SPD Office (SSA Rajya Mission Tripura)

**M.ii** In North Tripura total VEC is 85. Highest number of VEC in Gournagar R.D Block i.e. 38 and lowest in Jaimpui is 7. Block wise distribution of Village Education Committee (VEC) is shown in the following table-

Block	No. of VEC
Gournagar	38
Kumarghat	30
Panisagar	33
Kadamtala	27
Pechartha	13
Dasda	28
Damcharra	09
Jaimpui	07
Total	185

Source: - DPO Office, North Tripura

**M.iii** All visited VECs MI found that all Village Education Committee (VEC), there is at least seven members. Most of VECs there is both male and female members exist. ST, SC category members also exist. There is one meeting held in a month. If necessary VEC maintain twice or more than twice meeting in a month. In a Gram Panchayat there is one VEC. If in a village there are ten schools it is expected that from all schools at least one teacher must be member of VEC. But teachers view is that since teachers are not getting the membership of the VEC so they are not aware issues under SSA like as improving environment of the school, enrolment and attendance of the students, TLM grants, School grants etc.

## ***N. STAFFING AT STATE AND DISTRICT LEVEL***

### **N.i Staffing at state and District-**

At the state level sanctioned post are 22 and appointed and joined is 22. In North Tripura District sanctioned post are 16 but appointed and joined is only 7. In state level SSA office interview has been taken for vacant posts and file is in process to appoint candidates in that vacant post.

### **N.ii Meetings-**

The number of meetings of the General Body and EC held during the previous financial year was sixteen.

### **N.iii Staffing at BRC and CRC-**

In North Tripura District total BRC staff is 48 sanctioned among them 21 appointed and joined (Table-N.1). Total CRC sanctioned staff is 153 among them 150 are appointed and joined (Table-N.2).

## **O. MID-DAY MEAL (MDM) SCHEME**

### **O.i Daily Service of Hot Cooked Meals-**

Out of 102 sampled schools 24.51% have not served meals i.e. 25 schools and 77 (75.49%) schools have served hot cooked meals (Table-O.1 and O.2).

### **O.ii Variety of Food Served-**

According to variety of food item served schools are categorized in four types. (a) *Very poor- MDM not given in any day out of the three visited days (27.62%).*

(b) *Poor- egg or vegetables not given. Only kichuri given in at least one day out of three visited days (25.45%).*

(c) *Medium- egg not given, vegetables given in at least one day out of three visited days (16.36%).*

(d) *Good- egg given at least in one day out of three visited days (31.82%) (Table-O.2).*

### **O.iii Food items served-**

Food items being served vegetables, kichuri and egg.

### **O.iv Inclusion of Green Vegetables in MDM-**

At the date of visit (from 3<sup>rd</sup> visit in Table-O.3) 50 schools served Kichuri among them 35 schools (70.00%) have added green vegetables and 30.00% have not added vegetables.

### **O.v Inclusion of Eggs and Fruits in MDM-**

Fruits are not been served in MDM.

### **O.vi Children view about MDM-**

*Children are interested to take MDM. 75% children are happy about quality of meal and 88% of children are happy about quantity of meal.*

### **O.vii Micro Nutrients and Dewarming Medicines Given**

## **To Children in schools-**

None of the sampled primary schools gave the micronutrients namely Iron, folic acid, vitamin- A dosage periodically.

### **O.viii Percentage of children who took MDM-**

*Observation of MDM is based on three days of visits. Here again five categories are considered. Very poor means 0% students consume MDM. Poor means (1-30)% students consume MDM. Medium means (30-50)% students consume MDM. Good means (50-80)% students consume MDM and very good means (80-100)% students consume MDM. The percentages are 24.51%, 13.73%, 22.55%, 34.31% and 4.90% for very poor, poor, medium, good and very good respectively.*

### **O.ix Who Cooks and Serves MDM-**

In 95% schools helpers cook and serve meal. In 5% schools women SHGs do this work.

### **O.x Social Status of Cooks Engaged For MDM-**

Around 90% of cooks are women. They belong to BPL (Below Poverty Line) families. They are ST, SC, and Minorities depending on the local community.

### **O.xi Monthly Remuneration of Cooks and Regularity of its Payment-**

Only wages for cooks per child per day Rs. 0.20 and contingences for organizer in the schools are paying Rs.0.10 per child per day.

### **O.xii Type of Kitchen Shed-**

*Sixty-one schools are found with pucca kitchen shed out of 111 sampled schools. Kitchen shed is very small in fifteen schools out of the sixty-one schools. These are not usable for cooking. Out of the remaining 50 schools 20 schools have kachha shed. The remaining 31 schools kitchen sheds are not available. In this cases food is being cooked in the nearest houses.*

### **O.xiii Availability of Storeroom for Food grains-**

*Out of 111 sampled schools only 23 schools have storage facility for food grains.*

### **O.xiv Water Facility-**

*In North Tripura District one major problem is water problem. There is water crisis in the period of January to May because there were no rains in this period. The wells cherras and water bodies become dry. Among 111 sampled schools 25 schools have availability of potable water for cooking and drinking purpose. Five schools depend on Mark-II and others schools depend on charra, kachha well, tube well, river, pond etc.*

### **O.xv Utensils-**

*All schools have minimum required utensils for cooking. Schools have procured utensils from school grants, TLM grants, examination fees etc. But for consuming MDM students have not any eating plates. Most of the students carry their eating plates from their home.*

**O.xvi Kind of Fuel-**

Only seven schools are found whose fuel is LPG. Others schools used fuel wood.

**O.xvi General Impressions of the Environment-**

Safety Table-O.6 reveals that in terms of safety 62 (55.86%) schools are good category and 9.00% schools are poor category. 25.23% is very good category and 9.91% is fair category. Boundary walls etc. are considered in this case.

Hygiene Table-O.6 shows that in most of the schools hygienic condition is poor i.e. 56.76% (63). Lowest percentage of schools hygienic condition is very good i.e. 16.36% (18) and 16.22% and 17.12% schools hygienic condition is good and fair. Clean clothes of students etc. are considered here.

Cleanness Table-O.6 depicted that in terms of cleanness 19.82%, 15.32%, 17.12%, and 47.75% of sampled schools in North Tripura are very good, good, fair and poor category. Cleanness of toilets etc. is considered. \_\_\_\_\_

Discipline According to Table-O.6 it is clear that in North Tripura District discipline of students is very good and good which is 20.72% and 68.47%. Negligible percentage of students' discipline is poor. Which is 2.70%. MI's view according discipline best school is Laxminarayan Bari J.B School. Classroom noise etc. is considered here.

**O.xvii Personal Hygiene & Manners while Taking Meal-**

1. All sampled primary schools in North Tripura District the children are encouraged to wash their hands, plates and glass before and after the meal.
2. All sampled schools all children in North Tripura District children are encouraged to consume MDM in an orderly manner but due to shortage of space and proper sitting arrangement it was not possible for them to be orderly always..
3. *Conservation of water* is not satisfactory.

**O.xviii Discrimination on the basis  
Of Gender/Caste/Disability-**

*In North Tripura District there is no discrimination on the basis of gender, caste, community, class and disability.*

**O.xix Supervision of MDM programme by parents/VECs/Panchayat/Urban bodies-**

In North Tripura District one role is that at least one mother must inspect the MDM programme daily. In some schools mothers are doing this specially in urban areas but most of the mothers of schools do not take this job seriously.

**O.xx Inspection of Mid-Day Meal-**

- 1. CRC coordinator inspected the MDM. In a month CRC coordinator or CRP must inspect eight schools. But due to shortage of CRP this process was not regular.*
- 2. One Deputy Inspector of School (DIS) must inspect fifteen schools in a month. This inspection is regular.*

**P. ADDITIONAL ITEMS CHECKED BY MI DURING SCHOOL VISIT**

**P.i Functioning Days**

Ideal number of working days or functioning days in North Tripura District is 253 days (Information collected from District Education Office) in the last academic year i.e. 1<sup>st</sup> January 2006 to 31<sup>st</sup> December 2006. MI collected information all sampled schools from students' attendance register of 2006 from different classes. Actual working days and variance between actual and ideal number of working days is given appendix (Table-P.1). Highest variance is 64 days. Highest variance is shown High and Higher Secondary schools because these schools are engaged in several final examination, meetings, training programme, health camp or security camp etc.

**P.ii School Environment**

- 1. Teachers Room In all sampled school of North Tripura District there is at least one teachers' room available (Table-P.2 and Table-P.2.1).*
- 2. Adequate Classroom In North Tripura District among the all sampled schools 66.67% schools have adequate classroom and 33.33% of schools have shortage of classroom (Table-P.2 and Table-P.2.1).*
- 3. Good Flooring In North Tripura District among the all sampled schools 63.96% schools have good*

flooring and 36.04% of schools have not (Table-P.2 and Table-P.2.1).

4. Playground Out of 111 sampled schools 72 schools (64.86%) have playground and 39 schools (34.14%) have not (Table-P.2 and Table-P.2.1).
5. Proper Lighting Out of 111 sampled schools 20 (18.02%) schools having proper lighting facility and others have not get this facility (Table-P.2 and Table-P.2.1).
6. Pucca Building In North Tripura District 99.09% of schools has pucca building among the sampled schools (Table-P.2 and Table-P.2.1).
7. Adequate Sitting Arrangement All sampled schools have not adequate sitting arrangements. 75 (69.44%) of schools have adequate sitting arrangements and 33 (30.56%) of schools suffering shortage of sitting arrangements (Table-P.2 and Table-P.2.1).
8. Adequate Blackboard In North Tripura District 87 schools out of 111 schools have adequate blackboard and 21 schools have not (Table-P.2 and Table-P.2.1).
9. Adequate Play Materials Only 45.37% of schools among the sampled schools have adequate play materials and others have not. At the date of visit five schools are found that students use play materials (Table-P.2 and Table-P.2.1).

### **P.iii Health Camp**

During the last six-month seventy schools are found that health camp arranged in the school. These schools are situated in ADC (Autonomous District Council) areas. Health camp was organized by Health Department, Government of Tripura.

### **P.iv Gender wise Student Attendance Rate (Primary Section)**

School wise and student enrolment and student attendance rate at visited day by MI shown in appendix (Table-P.3). In North Tripura District enrolled boys is higher than the enrolled girls. Not only this student attendance rate of boys is higher than the student attendance rate of girls. i.e. total enrolled boys is 8440 and enrolled girls is 8047 among them present boys is 4183 (49.56%) and present girls is 3946 (49.04%).

### **P.iv Reasons of Low Attendance**

In the first visit by MI i.e. 9<sup>th</sup> January 2007 to 20<sup>th</sup> January 2007 low attendance was found due to local festive, Swarashati puja, Makar Sankranti, Jatra, lack of books etc.

In the first visit by MI i.e. 22<sup>nd</sup> February 2007 to 2<sup>nd</sup> February 2007 low attendance was found due to annual sports. Most of schools arranged annual sports programme specially in Kanchanpur Sub-Division.

### **P.v Steps to Promote Attendance**

To promote attendance rate in North Tripura District VEC plays a vital role. In a month VEC organize a meeting with teachers, parents and visit home-to-home and counseling parents those children are not regular.

### **P.vi Achievement Level of Children**

*To test the achievement level of children MI canvassed a questionnaire. Twenty schools were selected to test the quality level of children. Questionnaire is given in appendix. Total students tested was 182. Among them 87 were boys and 95 were girls. In this test there are three subjects- Bengali, English and Mathematics. All students are from class-V, those who have passed from class-IV. Test were taken according to class-IV syllabus.*

#### ***Bengali Test-***

- 1. In Bengali test 104 (57.14%) students can read story. Among them percentage of boys (58.62%) is higher than the percentage of girls (55.78%) (Table-P.4.1).*
- 2. Students can read para only is 19.23% among them percentage of girls (21.05%) is higher than the boys (17.24%) (Table-P.4.1).*
- 3. 17 (9.34%) students can read word only (Table-P.4.1).*
- 4. 17 (9.34%) students can read latter only (Table-P.4.1).*
- 5. 4.95% students cannot read anything (Table-P.4.1).*

#### ***English Test***

- 1. In English test 38 (20.88%) students can read story. Among them percentage of girls (21.05%) is higher than the percentage of boys (20.69%) (Table-P.4.2).*
- 2. Students can read para only is 25.82% (Table-P.4.2).*
- 3. 28 (15.38%) students can read word only (Table-P.4.2).*
- 4. 47 (25.82%) students can read latter only (Table-P.4.2).*
- 5. 12.09% students cannot read anything (Table-P.4.2).*

### **Mathematics Test**

1. In Mathematics test 59.34% of students can do division. Here percentage of boys (66.67%) is higher than the girls (52.62%) (Table-P.4.3).
2. 86.36% of students can do subtraction. Here percentage of boys (93.10%) is higher than the girls (82.11 %) (Table-P.4.3).
3. 75.27% of students can do number recognition. Here percentage of boys (77.10%) is higher than the girls (73.68%) (Table-P.4.3).
4. 10.99% of students cannot do anything. Here percentage of girls (16.84%) is higher than the boys (4.60%) (Table-P.4.3).
5. 54.40% students can understand the question and formulate the answer (Table-P.4.3).
6. 45.60% students cannot understand the question (Table-P.4.3).

### **P.vii Present process of assessing the Achievement Level of Students**

In North Tripura District the present process of assessing the achievement level of students is examination process. In a year four monthly examination, one half-yearly examination and one annual examination are conducted in a year.

1. Students' attendance must be 70% in an academic year.
2. 40% marks taken from monthly examination for consideration of their promotion to next higher class.
3. 60% marks taken from two examinations i.e. half-yearly and annual examination.
4. Oral examination has been taken in all classes.

From 2005-06 no detention policy has been introduced up to class-IV. But teachers view is that this is not a proper policy. According to them this process directly hamper the quality of the student and in long-run quantity of education is very high but quality is very low.

### **P.viii Over age and under age child**

All sampled school under age children are not found but over age students are found in rural areas.

### **P.ix Rapport of children with teachers**

During the school visit by MI most sampled schools rapport of teachers and students was quite satisfactory like as Krishnapur H.S School, Pabiacharra H.S School, Amtilla V.Nangappa High, Amtilla V.Nangappa High, Rajbari

Girls' H.S School, Padampur H.S. (+2Stage) School, Dhansingh Memorial (Kanchanbari) H.S., Netaji Vidyapith H.S.School, Chandra Mohan Baidya Para J.B.

### **P.x Dropout, Repeater and Five year full enrolment**

To calculate dropout, repeaters and five-year full enrolment MI conducted a cohort study. For cohort analysis twelve sample school are taken and students beginning grade I in 2001. The outcome of the study is that-

1. Dropout rate is 17.08 (Table-P.5).
2. Repeaters rate is 53.19 (Table-P.5).
3. 28.68% is five year full enrolled (Table-P.5).
4. 56.52% dropout in class-I. Among them 33.04% are boys and 23.48% are girls (Table-P.6).
5. In class-V dropout was zero (Table-P.6).
6. Girls dropout rate is (38.25%) lower than the boys (Table-P.6).
7. According to caste wise / community wise table it is found that dropout rate of SC student is high and ST student is low (Table-P.7).
8. 34.32% repeaters in class-I. Among them 15.58% are boys and 18.74% are girls (Table-P.8).
9. In class-V repeaters rate is lowest i.e. 2.17 (Table-P.8).
10. Girls repeaters rate is higher than the boys (Table-P.9).
11. According to caste wise / community wise table it is found that repeaters rate of General student is high and ST student is low (Table-P.9).
12. Out of total repeaters 46.22% students repeats one time, 30.25% students repeats two times, 17.65% students repeats three times and 3.52% and 2.52% students repeats four and five times respectively.
13. According to completion of five-year girls rate (51.26%) is higher than the boys' rate (48.74%) (Table-P.11).

# Chapter -V

## Executive Summary

The Monitoring Outcome for North Tripura District for the period October 2007 to March 2007 of SSA is summarized below-

### A. Opening of Schools (both primary and upper primary)

☞ *In North Tripura there are 15 sanctioned schools and all schools are opened.*

### B. Civil Works

- 1. Sixteen drinking water facility and twenty-seven toilets are sanctioned but records are not available in SPO Office and DPO Office because these parts are done by Rural Development Department.*
- 2. In North Tripura there was no convergence with Swajaldhara and Total Sanitation Campaign (TSC).*
- 3. DPO provide funds from SSA for toilet, drinking water and kitchen shed to the Block Development Office (BDO) but records are not available.*

### C. Textbooks

- 1. During the field visit of the MI it was found that all sampled schools have not received all books for distribution to the students within one month of opening of the school. Because complete sets were not available.*

### D. School Grants

- 1. The actual date of receiving school grants was not available in DPO Office.*
- 2. Around 95% of school grants for the last years are utilized. Also current years (2006-07) school grants was also utilized (Table-D.3). Out of the sampled school 58.56% of schools has received school grants. 11.71% of schools have not received school grants. 29.73% of school information is not available. Percentage of utilization of school grants*

is that 47.75% schools have not utilized and 22.53% of schools have utilized the grant (Table-D.4)

3. Among all the sampled schools in the current financial year 22.53% of schools utilized their school grants on Utensils, filter, glass, knife, gum, display board, football, carom, repairing, dishes, science equipments, colour etc (Table-D.3).

## E. Teachers and Teachers Training

- ☞ For all sampled schools in North Tripura District the average number of teachers in primary school is 6.34. According to teachers attendance rate 62.16% of school is very good, 23.42% of school is good, 9.91% is medium and 0.90% is poor (Table-E-2). Here one point to note is that teachers who are engaged in training and other duties are not included in the calculation of teachers' attendance.
- ☞ Biting of students by teachers is not an expectable practice in most of the schools visited by MI. Injuring of students for biting was not reported in any of the schools.
- ☞ As per report of the SPO in North Tripura District target number of in-service teachers for training is 4178 and actual number is 3900 (Table-E.3).
- ☞ As per report of the DPO, the target number of in-service teachers for training is 3520. Among them actual number of teachers having training is 2575 (Table-E.4). For teachers training a training calendar is maintained. The venues of training are BRC, DIET and IGNOU. Content and module for training was prepared by SCERT. The trainers are Master Trainers and Faculty members of DIET. The educational qualification of the Master Trainers must be Post Graduate teachers having B.Ed.
- ☞ In North Tripura District 30-days orientation training programme is not conducted in 2006-07. Most of the trainings are 10-days, 15-days and 20-days for in-service teachers.
- ☞ As per report of SPO in North Tripura District the actual number of teacher for refresher training of 60-days is 222.  
As per report of DPO in North Tripura the target number of newly recruited teachers training of 60-days is 571 and actual number trained is 425. The venue of training is BRC Hall and DIET. Post Graduate teachers having B.Ed. are the Master trainers.
- ☞ As per report of DPO in North Tripura the target number of newly recruited teachers training of 60-days is 571 and actual number trained is

425. The venue of training is BRC Hall and DIET. Post Graduate teachers having B.Ed. are the Master trainers.

- ☞ Observing classroom transaction and other academic activities of the teachers could have assessed whether the training imparted has been useful. However, the visit period was such that the schools were not totally active in academic activity. Therefore a positive impression was not created regarding level of training and its satisfactory translation in classroom environment.
- ☞ The MI covered 21% of CRC i.e. 17 CRCs out of 81 CRCs in North Tripura District. CRC organized short course training conducted by BRC. Recently CRCs have taken steps to improve teacher performance and children's learning. However, the CRCs complained of lack of staff and lack of integration into the SSA frame.
- ☞ But some BRCs and CRCs expressed their dissatisfaction. According to them for more functional BRC and CRC, it is urgently required that appointments be made of BRP and CRP who have a minimum professional and academic training. Further, time-to-time meetings will be required to be held for better monitoring. They further complained that difficult and interior schools are difficult to monitor without timely logistic support from higher authorities.
- ☞ DIETs in North Tripura District are not extending sufficiently their cooperation to the BRCs and CRCs in the field of capacity building, academic supervision and guidance, action research and monitoring of BRC/CRCs.

## F. Teaching Learning Materials (TLM) Grants

- ☞ Up to 2<sup>nd</sup> March 2007 i.e. when MI team visited the schools, there were 56.76% schools that have received school grants, 15.31% schools have not received and for 27.93% schools information are not available. Not available means they could not tell the date of receipt TLM (Table-F.1&F.2). According to them upper primary Head teacher, VEC secretary, chairpersons know i.e. teachers are not aware about teachers grant.
- ☞ Discussion with teachers and observation MI found that teachers view is that they use TLM in the classroom regularly. But at the date of visit by MI team only one school a teacher use TLM. The name of the school is Chandra Mohan Badya Para J.B. School and teachers name is Sri Punyaban Chakma.

## G. EGS & AIE/NRBC/RBC

- ☞ In North Tripura District there were 5457 students upgraded to the mainstream. Among them 2079 from Gournagar block, 884 from Kumarghat block, 719 from Pecharthal block, 529 from Damcharra, 467 from Dasda, 424 from Kadamtala, 311 and 44 from Panisagar and Jaimpui respectively.

## H. Children With Special Needs (CWSN)

- ☞ In North Tripura District there are 461 disabled children. Among them, 6-11 years enrolled girls are 99 and boys 165. 11-14 years enrolled girls are 47 and boys 65. They are visually impaired (VI); hearing impaired (HI); speech impaired (SI); orthopedically impaired (OI); mentally retarded (MR) and others have cerebral palsy (CP); multiple disability (MD) and learning disability (LD). Orthopedically impaired (OI) children are highest in North Tripura District. 74 disabled children are never enrolled they are of VI; SI; MD; OI and MR category.

## I. National Programme for Education of Girls at Elementary Level (NPEGEL)

- ☞ *Sanctioned amount by the state for NPEGEL is 6.04 Lack per school. Release fund is 1.50 lack up to 27-02-2007. The school has eight classrooms and present status of the room is good. Source of drinking water facility is ring well and the school has a pucca toilet.*

## J. Kasturba Gandhi Baliaka Vidyalaya (KGBV)

- ☞ *In North Tripura District KGBV was started in October 2006. The KGBV is situated in Damcharra R.D Block, Kacharicherra Gram Panchayat. The block is educationally backward block, not only this female literacy rate is low and gender gap in literacy is more than the national average.*

## K. District Information System for Education (DISE)

- ☞ *State maintained DISE (District Information for Education) data from 2003-04.*

## I. RESEARCH AND EVALUATION

- ☞ *State and District authorities reported no major research and evolution activity.*

## M. FUNCTIONING OF THE VEC

- ☞ *All visited VECs MI found that all Village Education Committee (VEC), there is at least seven members. Most of VECs there is both male and female members exist. ST, SC category members also exist. There is one meeting held in a month. If necessary VEC maintain twice or more than twice meeting in a month.*

## N. STAFFING AT STATE AND DISTRICT LEVEL

- ☞ *In North Tripura District sanctioned post are 16 but appointed and joined is only 7. In state level SSA office interview has been taken for vacant posts and file is in process to appoint candidates in that vacant post.*

## O. MID-DAY MEAL (MDM) SCHEME

- ☞ *Very poor- MDM not given in any day out of the three visited days (27.62%).*
- ☞ *Poor- egg or vegetables not given. Only kichuri given in at least one day out of three visited days (25.45%).*
- ☞ *Medium- egg not given, vegetables given in at least one day out of three visited days (16.36%).*
- ☞ *Good- egg given at least in one day out of three visited days (31.82%) (Table-O.2).*
- ☞ **Children view about MDM-**

*Children are interested to take MDM. 75% children are happy about quality of meal and 88% of children are happy about quantity of meal.*

- ☞ **Percentage of children who took MDM-**

*Observation of MDM is based on three days of visits. Here again five categories are considered. Very poor means 0% students consume MDM. Poor means (1-30)% students consume MDM. Medium means (30-50)% students consume MDM. Good means (50-80)% students consume MDM and very good means (80-100)% students consume MDM. The percentages are 24.51%, 13.73%, 22.55%, 34.31% and 4.90% for very poor, poor, medium, good and very good respectively.*

- ☞ **Type of Kitchen Shed-**

*Sixty-one schools are found with pucca kitchen shed out of 111 sampled schools. Kitchen shed is very small in fifteen schools out of the sixty-one schools. These are not usable for cooking. Out of the remaining 50 schools 20 schools have kachha shed. The remaining 31 schools kitchens sheds are not available. In this cases food is being cooked in the nearest houses.*

- ☞ *Out of 111 sampled schools only 23 schools have storage facility for food gains.*

☞ **Water Facility-**

*In North Tripura District one major problem is water problem. There is water crisis in the period of January to May because there were no rains in this period. The wells cherras and water bodies become dry. Among 111 sampled schools 25 schools have availability of potable water for cooking and drinking purpose. Five schools depend on Mark-II and others schools depend on charra, kachha well, tube well, river, pond etc.*

☞ **Utensils-**

*All schools have minimum required utensils for cooking. Schools have procured utensils from school grants, TLM grants, examination fees etc. But for consuming MDM students have not any eating plates. Most of the students carry their eating plates from their home.*

☞ **Inspection of Mid-Day Meal-**

- 1. CRC coordinator inspected the MDM. In a month CRC coordinator or CRP must inspect eight schools. But due to shortage of CRP this process was not regular.*
- 2. One Deputy Inspector of School (DIS) must inspect fifteen schools in a month. This inspection is regular.*

## P. ADDITIONAL ITEMS CHECKED BY MI DURING SCHOOL VISIT

☞ **Achievement Level of Children**

*To test the achievement level of children MI canvassed questionnaires. Twenty schools were selected to test the quality level of children. Total students tested were 182. Among them 87 were boys and 95 were girls. In this test there are three subjects- Bengali, English and Mathematics. All students are from class-V. **4.95% students cannot read anything in Bengali. 12.09% students cannot read anything in English. 10.99% of students cannot do simple addition, subtraction and multiplication in Mathematics.***

## Q. PRIORITIES AREAS OF SSA: QUALITY EDUCATION

After completion of the total monitoring exercise, the MI is of the opinion that Tripura has made satisfactory achievement in school infrastructure. The mid-day meal programme is also more or less satisfactory. But the quality of education being provided by the schools is not satisfactory. However in this case one can distinguish between primary schools, which are in Higher Secondary Schools, High Schools, Senior

Basic Schools, and Junior Basic Schools. Quality of teaching in Higher Secondary Schools primary education classes is satisfactory in High Schools also the quality is not so bad. But in Senior Basic Schools, and Junior Basic Schools the quality of education is on the whole not at all satisfactory. Teachers' attendance is also poor in these schools. The first and foremost step will be to ensure teacher attendance and teacher training in these schools. Regular monitoring by CRCs and BRCs for these target schools has to be ensuring special awareness programme, workshop and seminar in regular for monitoring the teachers should be in the high priority list. Most of the schools do not have electric connection this is require for providing computer aided learning in this schools where this technology will have the highest value. Pedagogy training for these schools should be regular affair. Independent CRC level evaluation of students, Learning would provide feedback on progress in quality learning. Action research project for teachers for these schools would be beneficial. DPOs and Inspector of Schools should be given specific responsibility for this type of schools taking such measures would help in improving quality of primary education of the State. Which is the prime area of concerns.

THE END

# **Appendix-A**

## **Visual Documentation**

**Photographs are given in CD in all reports except the report to MHRD.**

## Appendix-B

**TABLE-A.1 OPENING OF NEW SCHOOLS**

DISTRICT	No. of Primary School sanctioned including spill over in the current year		
	Opened	Yet to be opened	Total
West	89	-	89
South	53	-	53
North	15	-	15
Dhalai	54	-	54
Total	211	-	211

Source: -SPD office, SSA Rajya Mission-Tripura

**TABLE-A.2 CATEGORY OF OPENING OF SCHOOL**

Block	NO. OF SCHOOL SANCTIONED INCLUDING SPILL- OVER IN THE CURRENT YEAR			No of Teachers been put in position
	OPENED	No. of proposed school land are being identified	Stage of construction of Schools	
Gournagar	05	Yes	Com-2, Roof-1, Finishing level-2	15
Kumarghat	03	Yes	Com-1, Finishing level-2	09
Panisagar	03	Yes	Plinth-1, Roof-1, other-1	09
Kadamtala	03	Yes	Roof-2, Other-1	09
Pecharthal	00	00		
	01	Yes	Other-1	03
	00	00		
	00	00		
	<b>15</b>			<b>45</b>

Source: - DPO Office, North Tripura

**TABLE-A.3 DISTRICT WISE TEACHERS POSITION IN NEW SCHOOL**

DISTRICT	No of teachers sanctioned for the new primary schools		
	Post Sanctioned	Post Appointed	Post Joined

West	267	267	--
South	159	159	--
North	45	45	--
Dhalai	162	162	--

Source: -SPD office, SSA Rajya Mission-Tripura

**TABLE- B.1 CIVIL WORKS**

Activity	Total No. of School Sanctioned	SL No.	Name of Visited School	Sanctioned Amount	Utilization Amount	Proposed (SPD office)	Achievement
<b>New Primary School</b>	(List enclosed in Appendix)	1	Tegory Daspara J.B. School	6.25 Lakh	5 Lakh	Lintel Level	Roof Level
		2	Kumarghat Ward No.10 J.B. School	6.25 Lakh	3 Lakh	Not started	Foundation Level
		3	Chitagang Basti J.B School	6.25 Lakh	3 Lakh	Plinth level	Foundation Level
		4	Saipulbuyal J.B School	6.25 Lakh	0	Not Started	Not Started
<b>New SB School</b>		5	Subal Para S.B School	8.50 Lakh	8.00 Lakh	Not available	Roof Level

<b>Additional Class room</b>	71 (List enclosed in Appendix)	6	Barkhala S.B School	1.35 Lakh	1.15 lakh	Plinth level	Roof Level
		7	Bagacharra J.B School	1.35 Lakh	1 Lakh	Not available	Lintel Level
		8	Ichaitulgoan S.B School	1.35 Lakh	1.35 Lakh	Not Started	Comple te
		9	Kurti Col. S.B School	1.35 Lakh	1 Lakh	NA	Lintel Level
		10	Kameswargoan Bh. Col. S.B School	1.35 Lakh	1.15 lakh	Not Started	Roof Level
		11	Magululi S.B School	1.35 Lakh	0	Not Started	Not Started
		12	Kacharichhara S.B School	2.90 Lakh	1.75 Lakh	Not Started	Roof Level
		13	Uptakhali Col.S.B School	1.35 Lakh	0	NA	Not Started
		14	Uttar Fulbari S.B School	1.35 Lakh	0	NA	Not Started
		15	Gobindapur S.B School	1.35 Lakh	0	NA	Not Started
		16	Prakash Chow. Para SB	1.35 Lakh	1.20 Lakh	Not Started	Roof Level
		17	Makai Chow. Para SB	1.35 Lakh	1.25 Lakh	Plinth level	Roof Level
		18	Bilashcherra SB	1.35 Lakh	1.35 Lakh	NA	Comple te
		19	Uricherra SN SB School	1.35 Lakh	1.35 Lakh	NA	Comple te
		20	Setudwer S.B School	1.35 Lakh	50,000	NA	Foundat ion Level
		21	Laxmipur SB School	1.35 Lakh	90,000	NA	Window level

<b>CRC Building</b>	27 (List enclosed in Appendix)	22	Tillabazar H.S School	2.45 Lakh	1 Lakh	Not Started	Foundation Level
		23	Golakpur T.E.S.B School	2.45 Lakh	2 Lakh	Roof Level	Lintel Level
		24	Darchui S.B School	2.45 Lakh	2.45 Lakh	Foundation Level	Complete
		25	Kalachara H.S School	2.45 Lakh	0	Not Started	Not Started
		26	Fulbari High School	2.45 Lakh	1.50 Lakh	Not Started	Lintel Level
		27	Batarashi High School	2.45 Lakh	2 Lakh	Not Started	Roof Level
		28	Halflong Village High School	2.45 Lakh	0	Not Started	Not Started
		29	Laljuri High School	2.45 Lakh	2.45 Lakh	NA	Complete
		30	Kacharicherra SB	2.45 Lakh	2.20 Lakh	Not Started	Roof Level
		31	Pipalacherra SB School	2.45 Lakh	2.45 Lakh	NA	Complete
		32	Laxmipur SB School	2.45 Lakh	2 Lakh	Not Started	Roof Level
		33	Uttar Laljuri Joysree H.S. School	2.45 Lakh	2 Lakh	Not Started	Roof Level
		34	Rabindranagar High School	2.45 Lakh	80,000 Lakh	NA	Lintel Level
		<b>Boundary Wall</b>	16 (List enclosed in Appendix)	35	Krishnapur H.S School	5.00 Lakh	3.5 Lakh
36	Vidyanagar H.S School			5.00 Lakh	5.00 Lakh	Complete	Complete
37	Gokulnagar High School			5.00 Lakh	5.00 Lakh	Foundation Level	Complete
38	Panisagar H.S. School			5.00 Lakh	4.5 Lakh	Pillar	Work in progress
39	Pratyekroy H.S School			5.00 Lakh	3.5 Lakh	Pillar	Work in progress
40	Kalachara H.S School			5.00 Lakh	4.75 Lakh	Pillar	Work in progress
41	Fulbari High School			5.00 Lakh	3.75 Lakh	Pillar	Work in progress
42	Pecharthal H.S School			5.00 Lakh	4.75 Lakh	50Rm/PL	Work in progress
43	Piplacharra SB School			5.00 Lakh	5.00 Lakh	Pillar	Complete
44	Kanchanpur Col. Girls H.S.School			5.00 Lakh	5.00 Lakh	40.00m	Complete
45	KCP English Medium High School			5.00 Lakh	5.00 Lakh	70.00Rm	Complete
46	Rangrung T.E.S.B. School			Boundary wall constructed from School Reappearing Grant.			

Source: Field Survey MI.

**TABLE- B.2 CIVIL WORKS**

Activity	SL No.	Name of Visited School	No. of Times technical person visited the construction site	MI's impression about construction	
<b>New Primary School</b>	1	Tegory Daspara J.B. School	1 times	Good	
	2	Kumarghat Ward No.10 J.B. School	1 times	Good	
	3	Chitagang Basti J.B School	2 times	Good	
	4	Saipulbuyal J.B School	0	0	
<b>New SB School</b>	5	Subal Para S.B School			
<b>Additional Classroom</b>	6	Barkhala S.B School	2 times	Good	
	7	Bagacharra J.B School	NA	Medium	
	8	Ichaitulgoan S.B School	0	Good	
	9	Kurti Col. S.B School	0	Good	
	10	Kameswargoan Bh. Col. S.B School	1 times	Good	
	11	Magululi S.B School	0	0	
	12	Kacharichhara S.B School	NA	Good	
	13	Uptakhali Col.S.B School	NA	Good	
	14	Uttar Fulbari S.B School	0	0	
	15	Gobindapur S.B School	0	0	
	16	Prakash Chow. Para SB	NA	Medium	
	17	Makai Chow. Para SB	NA	Medium	
	18	Bilashcherra SB	0	Good	
	19	Uricherra SN SB School	2 times	Good	
	20	Setudwer S.B School			
	<b>CRC Building</b>	21	Laxmipur SB School	NA	Medium
		22	Tillabazar H.S School	NA	Medium
23		Golakpur T.E.S.B School	1 times	Good	
24		Darchui S.B School	NA	Good	
25		Kalachara H.S School	1 times	Good	
26		Fulbari High School	6 times	Good	
27		Batarashi High School	2 times	Medium	
28		Halflong Village High School	0	0	
29		Laljuri High School	NA	Good	
30		Kacharicherra SB	2 times	Medium	
31		Pipalacherra SB School	NA`	Good	
32		Laxmipur SB School	NA	Medium	
33		Uttar Laljuri Joysree H.S. School	NA	Medium	
34		Rabindranagar High School	2 times	Good	
<b>Boundary Wall</b>	35	Krishnapur H.S School	1 times	Good	
	36	Vidyanagar H.S School	4 times	Good	
	37	Gokulnagar High School	4 times	Good	
	38	Panisagar H.S. School	2 times	Good	
	39	Pratyekroy H.S School	3 times	Good	
	40	Kalachara H.S School	3 times	Good	
	41	Fulbari High School	6 times	Good	
	42	Pecharthal H.S School	2 times	Good	
	43	Piplacharra SB School	NA	Good	
	44	Kanchanpur Col. Girls H.S.School	5 times	Good	
	45	KCP English Medium High School	5 times	Good	

Source: Field Survey MI.

**TABLE-C.1 DISTRIBUTION OF TEXTBOOKS**

BLOCK	DISTRIBUTION OF TEXT BOOKS TO THE STUDENTS FOR THE CURRENT YEAR (2006-07)				
	GEN	ST	SC	GIRLS	TOTAL
Gournagar	9774	1151	1884	11961	24770
Kumarghat	4608	1770	2714	8484	17576
Panisagar	11400	770	2107	13201	27478
Kadamtala	11473	294	2094	12789	26650
Pecharthal	1231	2221	206	3346	7004
	1476	6890	486	7935	16787
	506	1794	78	2136	4514
	0	1135	0	1044	2179
	40468	16025	9569	60896	126958

Source: - DPO Office, North Tripura

**TABLE- D.1 DISTRICT WISE DISTRIBUTION OF SCHOOL GRANTS (2006-07)**

District	Approved Grants		Released Grants		Receipt Grants	
	Primary Schools	Upper Primary Schools	Primary Schools	Upper Primary Schools	Primary Schools	Upper Primary Schools
West	1343	745	1343	745	1343	745
South	989	403	989	403	989	403
North	621	417	621	417	621	417
Dhalai	664	223	664	223	664	223
Total	3617	1788	3617	1788	3617	1788

Source: -SPD office, SSA Rajya Mission-Tripura

**TABLE- D.2 BLOCK WISE DISTRIBUTION OF SCHOOL GRANTS (2006-07)**

BLOCK	SCHOOL GRANTS FOR THE CURRENT YEAR															
	APPROVED GRANTS				RELEASED GRANTS						RECEIPT GRANTS					
	1	2	3	4	5	6	7	8	9	10	11	12	13	14	15	16
Gournagar	98	1.96	60	1.20	98	1.96		60	1.20	22.6.06	98	1.96		60	1.20	
Kumarghat	98	1.96	58	1.16	98	1.96		58	1.16	22.6.06	98	1.96		58	1.16	
Panisagar	85	1.70	52	1.04	85	1.70		52	1.04	22.6.06	85	1.70		52	1.04	
Kadamtala	88	1.76	63	1.26	88	1.76		63	1.26	22.6.06	88	1.76		63	1.26	
Pecharthal	54	1.08	28	0.56	54	1.08		28	0.56	22.6.06	54	1.08		28	0.56	
	129	2.58	79	1.58	129	2.58		79	1.58	22.6.06	129	2.58		79	1.58	
	41	0.82	21	0.42	41	0.82		21	0.42	22.6.06	41	0.82		21	0.42	
	28	0.56	20	0.40	28	0.56		20	0.40	22.6.06	28	0.56		20	0.40	
	33	0.66	03	0.06	33	0.66		03	0.06	22.6.06	33	0.66		03	0.06	
	1077	4.54	384	7.68	1077	4.54		384	7.68		1077	4.54		384	7.68	

Pry School (No.)-1 / total amount-2 / U. Pry. School (No.)-3 / total amount-4/ Pry School (No.)-5 / total amount-6 / Date of release-7/ U. Pry. School (No.)-8 / total amount-9 / Date of release-10/ Pry School (No.)-11/ Total amount-12/Date of receipt-13/ U. Pry. School (No.)-14 / total amount-15/ Date of receipt-16

Source: - DPO Office, North Tripura

**TABLE- D.3 SCHOOL GRANTS (2006-07)**

SL No.	Name of School	School Grants received	Date of receipt	% of utilization	Nature of utilization
1	Krishnapur H.S School	Yes	NA	0	
2	Pabiacharra H.S School	Yes	-9-2006	0	
3	Balakmuni S.B. School	Yes	8-06-2006	0	
4	Kabi Sukanta J.B. School	Yes	20-07-2006	100%	
5	Kumarghat Ward No.10 J.B. School	NA	NA	NA	NA
6	Chitagang Basti J.B School	NA	NA	NA	NA
7	Kumarghat Railway Col. S.B School	Yes	20-09-06	100%	Caramboard, Chart, Map etc.
8	Tegory Daspara J.B. School	NA	NA	NA	NA
9	Tillabazar H.S School	NA	NA	NA	NA
10	Jubrajnagar Col.Girls'High	NA	NA	NA	NA

11	Irani High School	NA	NA	100%	Branch, chair, table etc.
12	Magululi S.B School	Yes	29-08-06	100%	Wall blackboard, Maintaince
13	Barkhala S.B School	NA	NA	0	
14	Uttar Hirachhara S.B School	NA	NA	NA	NA
15	Belkumbari High School				
16	Rangrung(TE)S.B School	Yes	24-08-06	100%	Towel, stapler, Gum, envelope etc.
17	Bagachhara J.B School	NA	NA	NA	NA
18	Chinibagan S.B School	NA	NA	NA	NA
19	Noonchhara J.B School	NA	NA	NA	NA
20	Golakpur T.E.S.B School	NA	NA	NA	NA
21	Halaichhara T.E.S.B School	Yes	-09-06	50%	Chalk, duster etc.
22	Vidyanagar H.S School	Yes	NA	100%	Almira
23	Nadiapur S.B.School	Yes	16-01-07	0	
24	Lalchhara High School				
25	Pratyekroy H.S School	NA	NA	NA	NA
26	Bargul High School				
27	Ichaitulgoan S.B School	NA	NA	NA	NA
28	Sonapur S.B School	Yes	09-11-06	0	
29	Gobindapur S.B School	Yes	09-10-06	0	
30	Kalachara H.S School	Yes	08-01-06	0	
31	Amtilla V.Nangappa High	NA	NA	NA	NA
32	Churaibari High School	NA	NA	NA	NA
33	Jherjheri J.B School	No			
34	Kurti Col. S.B School	Yes	17-12-06	0	
35	Uttar Fulbari S.B School	Yes	00-12-06	100%	Science equipments
36	Fulbari High School	Yes	15-11-06	100%	Reparing
37	Kadamtala H.S School	Yes	17-11-06	5%0	Dishes, filter etc.
38	Halflong Village High School	No			
39	West Radhapur S.B School	NA	NA	NA	NA
40	Jubarajnar High School	NA	NA	NA	NA
41	Deochara Bhitargoal J.B	Yes	NA	NA	NA
42	Noagoan J.B School	Yes	NA	50%	Dishes
43	Betangi J.B School	NA	NA	NA	NA
44	Tilthai Dobhanga S.B School	Yes	NA	0	
45	Madhya Deochara Nabin S.B School	No			
46	Ganganagar H.S School	NA	NA	NA	NA
47	Kameswar Mission Tilla J.B	Yes	NA	0	
48	Dharmanagar T.E.J.B	Yes	NA	0	
49	Kameswargoan Bh. Col. S.B	Yes	28-11-06	0	
50	Batarashi High School	Yes	NA	0	
51	Bagbasa High School	NA	NA	NA	NA
52	Chandpur S.B School	NA	NA	NA	NA
53	Joynagar High School	Yes	NA	100%	colour
54	Latugoan S.B School	Yes	11-12-06	0	

55	Katauli J.B School	Yes	12-12-06	5%	Chalk, Duster
56	Raibari Girls' H.S School	NA	NA	NA	NA
57	Dakshin Nayapara Kabi Sukanta J.B School	Yes	7-07-06	0	
58	Dharmapur S.B School	Yes	NA	100%	Colour
59	Nayapara Higher Secondary School	NA	NA	NA	NA
60	Padampur H.S. (+2Stage) School	NA	NA	NA	NA
61	Rajnagar S.B.School	NA	NA	NA	NA
62	Prakash Chow.Para S.B	Yes	6-11-06	100%	Blackboard, Football, Carom
63	Makai Chow. Para S.B.	Yes	NA	0	
64	Noydrone High School	No			
65	Dudhpur High School	Yes	NA	0	
66	Betchhara (Raitwissa)H.S	NA	NA	NA	NA
67	Balichhara S.B School	Yes	NA	0	
68	Laljuri High School	Yes	NA	0	
69	Paschim Demdum S.B.	No			
70	Dhansingh Memorial (Kanchanbari) H.S.	Yes	NA	0	
71	East Kanchanbari High	Yes	NA	0	
72	Saidarpar S.B School	Yes	NA	NA	
73	Netaji Vidyapith H.S.School	No			
74	Kacharghat High School	Yes	NA	0	
75	Kailashahar Girls' High School	Yes	NA	0	
76	Laxminarayan Bari J.B School	Yes	NA	100%	Indian Constitution, Wall writing, Display board etc.
77	Laxman Charra R.C.J.B	Yes	NA	100%	Chair, Khata, Pen etc.
78	Kacharichhara S.B School	Yes	NA	0	
79	Punnyaram Para J.B School	Yes	NA	0	
80	Piplachhara S.B School	Yes	-11-06	0	
81	Paiza Govt. S.B. School	Yes	NA	0	
82	Bhalukchhara S.B. School	No			
83	Kanchanpur J.B School	Yes	06-11-06	75%	Rack, Repairing
84	Chandra Mohan Baidya Para J.B	Yes	6-11-06	0	
85	Bakra Debbarma Para J.B	NA	NA	NA	NA
86	Sadhaham Para J.B	Yes	NA	0	
87	Rabindranagar High School	No			
88	Block Tilla S.B. School	No			
89	Suknachhara S.B.School	Yes	12-12-06	25%	Utensils
90	Laxmipur (Dasda) S.B School	Yes	NA	0	
91	Kanchanpur Col. Girls' H.S.	Yes	NA	100%	Bench repairing, paper, stationary etc.
92	Vanghmun S.B School	No			
93	Fuldaongsei S.B School	Yes	NA	0	

94	Moheshwar R.M.Model S.B.	NA	NA	NA	NA
95	Sabual High School	No			
96	Bangla S.B School	No			
97	Govt. Eng. Med. High School	Yes	27-10-06	100%	Knife, Gum, Pen etc.
98	Ujan Machmara S.B.School	Yes	NA	100%	Utensils
99	Laljuri H.S School	No			
100	Uttar laljuri Joysree H.S School	Yes	NA	0	
101	Santipur High School	Yes	NA	0	
102	Kernajoy C.P.High School	Yes	NA	50%	Filter, Glass etc.
103	Urichhara Subhashnagar S.B.	Yes	NA	0	
104	Doptachhara S.B School	Yes	NA	75%	Utensils
105	Santinagar Chantilla J.B	Yes	16-01-07	0	
106	Santipur PLT S.B.	Yes	NA	0	
107	Akshaymani Dhanicharra High	NA	NA	NA	NA
108	Ledrai Dewan H.S.School	Yes	NA	0	
109	Santipur J.B School	Yes	NA	100%	Utensils
110	Anandabazar High School	Yes	27-02-2007	0	
111	Wainsoukta Para J.B School	Yes	NA	0	

Source: Field Survey MI.

**TABLE- D.4. SCHOOL GRANTS (2006-07)**

Observation	School Grants Received			% of utilization of school grants				
	Yes	No	NA	NA	0%	(1-50)%	(51-75)%	(76-100)%
No. of school	65	13	33	33	53	6	2	17
% of total	58.56%	11.71%	29.73%	29.73%	47.75%	5.41%	1.80%	15.32%

Source: Field Survey MI.

**TABLE E.1 SCHOOLWISE TEACHERS' ATTENDANCE**

SL No	Total No. of Teacher	1 <sup>st</sup> Visit	2 <sup>nd</sup> Visit	3 <sup>rd</sup> Visit	ATAR For visit
1	7	7	7	6	95.24
2	21	19	16	19	85.71
3	8	NA	NA	4	50.00
4	2	-	-	2	100.00
5	1	1	1	1	100.00
6	1	1	1	1	100.00
7	6	-	-	5	83.33
8	NA	NA	NA	NA	NA
9	11	8	8	4	60.61
10	6	5	4	3	66.67
11	5	4	4	4	80.00
12	7	5	4	3	57.14
13	7	7	7	6	95.24
14	5	3	3	3	60.00
15	3	3	3	3	100.00

16	7	6	6	4	76.19
17	4	3	3	3	75.00
18	3	2	3	2	77.78
19	4	4	4	4	100.00
20	3	3	3	2	88.89
21	5	5	5	3	86.67
22	14	13	13	13	92.86
23	8	7	5	7	79.17
24	3	3	3	3	100.00
25	8	6	4	5	62.50
26	5	4	4	3	73.33
27	6	4	3	3	55.55
28	8	6	6	5	70.83
29	7	6	6	6	85.71
30	11	11	6	6	69.70
31	4	2	2	2	50.00
32	8	8	8	8	100.00
33	2	2	2	2	100.00
34	9	8	8	7	85.15
35	8	8	8	5	87.50
36	15	12	12	9	73.33
37	13	10	12	12	87.19
38	3	1	1	1	33.33
39	6	4	4	3	61.11
40	7	7	5	5	80.95
41	3	3	3	2	88.89
42	3	3	3	3	100.00
43	2	2	2	2	100.00
44	5	5	5	4	93.33
45	7	5	5	5	76.19
46	5	5	5	3	86.67
47	4	4	4	4	100.00
48	4	4	4	4	100.00
49	7	6	6	4	76.19
50	6	3	3	3	50.00
51	4	4	4	3	83.33
52	7	7	7	5	90.48
53	5	4	4	5	86.67
54	3	3	3	3	88.89
55	5	4	4	3	73.33
56	15	14	14	15	97.98
57	4	4	4	4	100.00
58	4	3	3	2	66.67
59	10	9	9	9	90.00
60	15	15	15	15	97.78
61	5	4	2	4	66.67
62	4	3	3	3	75.00
63	2	2	2	1	83.33
64	5	NA	NA	3	60.00
65	3	2	2	1	55.56
66	7	4	4	4	57.14
67	6	6	6	5	94.44
68	4	3	3	2	66.67

69	3	3	3	1	77.78
70	6	5	5	5	83.33
71	5	4	4	4	80.00
72	5	3	3	3	60.00
73	12	12	12	12	100.00
74	7	6	6	5	80.95
75	8	8	7	7	91.67
76	6	3	3	5	61.11
77	4	4	4	3	91.67
78	2	2	2	1	83.33
79	3	3	3	2	88.89
80	8	7	7	7	87.50
81	5	5	5	5	100.00
82	3	3	3	2	88.89
83	15	14	12	14	88.89
84	6	6	5	4	83.33
85	NA	NA	NA	NA	#VALUE!
86	2	2	2	1	83.33
87	10	9	9	7	83.33
88	8	5	6	6	70.83
89	5	4	4	4	80.00
90	7	5	6	6	80.95
91	NA	NA	NA	NA	#VALUE!
92	14	14	13	13	95.24
93	4	4	4	4	100.00
94	NA	NA	NA	NA	#VALUE!
95	9	9	9	9	100.00
96	6	5	5	5	83.33
97	9	9	8	6	85.19
98	4	3	3	3	75.00
99	4	2	2	2	50.00
100	4	4	4	3	91.67
101	6	5	5	5	83.33
102	10	10	10	9	96.67
103	6	6	5	6	94.44
104	6	6	6	5	94.44
105	5	3	2	2	46.67
106	8	5	5	4	58.33
107	14	12	11	11	80.95
108	3	3	3	3	100.00
109	14	14	14	14	100.00
110	4	3	4	2	75.00
111	3	3	3	3	100.00
Average Teachers' Attendance for District					

Source: Field Survey MI.

ATAR- Average Teachers' Attendance Rate.

**TABLE-E.2 TEACHERS' ATTENDANCE RATE (TAR)**

Category	Poor	Medium	Good	Very Good	Not Reported
	(0-40)%	(40-60)%	(60-80)%	(80-100)%	
No. of	1	11	26	69	4

<b>Observed School</b>					
<b>% of Total Observed School</b>	0.90%	9.91%	23.42%	62.16%	3.60%

Source: Field Survey MI.

**TABLE- E.3 DISTRICT WISE TEACHERS' TRAINING**

District	Number of in-service teacher training		
	Target	Actual	Target-Actual Ratio
West	20149	13410	50:33
South	6807	1265	18:58
North	4178	3900	93:39
Dhalai	3537	1930	54:69
Total	34671	20505	

Source: -SPD office, SSA Rajya Mission-Tripura

**TABLE- E.4 BLOCK WISE TEACHERS' TRAINING**

BLOCK	No. of in-service teachers training			Venue of training BRC, DIET IGNOU	About training (Y/N)		
	Target	Actual	Target-Actual Ratio		Is there any training calender	Is feedback are regular	Is any coordinator For quality judgment
Gournagar	615	475	100:74.70	DO	YES	Not regular	YES
Kumarghat	510	381	100:76.31	DO	YES	DO	YES
Panisagar	477	364	100:76.31	DO	YES	DO	YES
Kadamtala	604	454	100:79.31	DO	YES	DO	YES
Pecharthal	290	230	100:76.31	DO	YES	DO	YES
Dasda	578	379	100:65.57	DO	YES	DO	YES
Damcharra	215	135	100:62.79	DO	YES	DO	YES
Jaimpui	231	157	100:68.00	DO	YES	DO	YES
Total	3520	2575	100:73.15				

Source: - DPO Office, North Tripura

**TABLE E.5 SCHOOLWISE TEACHERS' TRAINING (LAST ACADEMIC YEAR)**

SL No	Total No.of Teacher	No. of Teacher having SSA training (last academic year)	% of teachers training
1	7	4	57.14
2	21	21	100.00
3	8	3	37.50
4	2	1	50.00
5	1	0	0.00

6	1	0	0.00
7	6	4	66.67
8	NA	NA	#VALUE!
9	11	4	36.36
10	6	1	16.67
11	5	3	60.00
12	7	3	42.86
13	7	3	42.86
14	5	NA	#VALUE!
15	3	3	100.00
16	7	4	57.14
17	4	NA	#VALUE!
18	3	0	0.00
19	4	4	100.00
20	3	0	0.00
21	5	4	80.00
22	14	3	21.43
23	8	3	37.50
24	3	1	33.33
25	8	0	0.00
26	5	2	40.00
27	6	2	33.33
28	8	0	0.00
29	7	4	57.14
30	11	5	45.45
31	4	3	75.00
32	8	6	75.00
33	2	1	50.00
34	9	5	55.56
35	8	2	25.00
36	15	9	60.00
37	13	4	30.77
38	3	0	0.00
39	6	4	66.67
40	7	2	28.57
41	3	1	33.33
42	3	3	100.00
43	2	0	0.00
44	5	4	80.00

45	7	3	42.86
46	5	1	20.00
47	4	0	0.00
48	4	0	0.00
49	7	3	42.86
50	6	2	33.33
51	4	1	25.00
52	7	2	28.57
53	5	3	60.00
54	3	4	133.33*
55	5	2	40.00
56	15	2	13.33
57	4	2	50.00
58	4	4	100.00
59	10	1	10.00
60	15	1	6.67
61	5	5	100
62	4	0	0
63	2	2	100
64	5	2	40
65	3	4	133.33*
66	7	14	200.00*
67	6	2	33.33
68	4	0	0.00
69	3	0	0.00
70	6	6	100.00
71	5	5	100.00
72	5	0	0.00
73	12	NA	#VALUE!
74	7	2	28.57
75	8	4	50.00
76	6	4	66.67
77	4	2	50.00
78	2	0	0.00
79	3	1	33.33
80	8	0	0.00
81	5	0	0.00
82	3	0	0.00
83	15	8	53.33
84	6	2	33.33
85	NA	NA	#VALUE!

86	2	0	0.00
87	10	3	30.00
88	8	0	0.00
89	5	1	20.00
90	7	0	0.00
91	NA	NA	#VALUE!
92	14	9	64.29
93	4	2	50.00
94	NA	0	#VALUE!
95	9	0	0.00
96	6	0	0.00
97	9	1	11.11
98	4	1	25.00
99	4	0	0.00
100	4	NA	#VALUE!
101	6	3	50.00
102	10	0	0.00
103	6	6	100.00
104	6	3	50.00
105	5	0	0.00
106	8	0	0.00
107	14	NA	#VALUE!
108	3	0	0.00
109	14	NA	#VALUE!
110	4	NA	#VALUE!
111	3	NA	#VALUE!

- This is beyond norms.

Source: Field Survey MI.

**TABLE E.6 TEACHERS' TRAINING (LAST ACADEMIC YEAR)**

No. of Observed School	Very Poor	Poor	Medium	Good
	0%	Up to 40%	(40-80)%	(80-100)%
	28	26	30	11
% of Total Observed School	28.28%	26.26%	30.30%	11.11%

Source: Field Survey MI.

**TABLE- F.1 TEACHING LEARNING MATERIAL (TLM) GRANTS (2006-07)**

SL No.	TLM Grants received	% of utilization	Nature of utilization
1	Yes	0	

2	Yes	0	
3	Yes	0	
4	Yes	100%	Harmonium
5	NA	NA	NA
6	NA	NA	NA
7	Yes	0	
8	NA	NA	NA
9	NA	NA	NA
10	NA	NA	NA
11	Yes	100%	Dictionary, Bengali & English Grammar, Chart, Map etc.
12	Yes	0	
13	NA	NA	NA
14	NA	NA	NA
15	NA	NA	NA
16	Yes	100%	Stationary goods.
17	NA	NA	NA
18	NA	NA	NA
19	NA	NA	NA
20	NA	NA	NA
21	Yes	50%	Picture, Chalk, Duster etc.
22	Yes	50%	Carom, Chalk, Duster etc.
23	Yes	50%	Picture, Chalk, Duster etc.
24	NA	NA	NA
25	NA	NA	NA
26	NA	NA	NA
27	NA	NA	NA
28	Yes	0	
29	Yes	0	
30	Yes	0	
31	NA	NA	NA
32	NA	NA	NA
33	No	0	
34	Yes	0	
35	Yes	100%	
36	Yes	100%	
37	Yes	0	
38	No	0	
39	NA	NA	NA
40	NA	NA	NA
41	Yes	0	
42	Yes	0	
43	NA	NA	NA
44	Yes	0	
45	No		
46	NA	NA	NA
47	Yes	0	
48	Yes	0	
49	Yes	0	
50	Yes	0	
51	NA	NA	NA
52	NA	NA	NA
53	Yes	0	

54	Yes	0	
55	Yes	3%	Pencil
56	Yes	0	
57	Yes	0	
58	Yes	100%	Colour
59	NA	NA	NA
60	NA	NA	NA
61	NA	NA	NA
62	Yes	0	
63	Yes	0	
64	No		
65	Yes	0	
66	NA	NA	NA
67	Yes	0	
68	Yes	0	
69	No		
70	Yes	0	
71	Yes	0	
72	Yes	0	
73	No		
74	Yes	0	
75	Yes	0	
76	Yes	0	
77	Yes	100%	School bell, Calculator, stationary etc.
78	Yes	0	
79	Yes	0	
80	Yes	100%	Utensils
81	Yes	0	
82	No		
83	Yes	0	
84	Yes	0	
85	NA	NA	NA
86	Yes	0	
87	No		
88	No		
89	No		
90	Yes	0	
91	No		
92	No		
93	Yes	0	
94	NA	NA	NA
95	No		
96	No		
97	No		
98	No		
99	No		
100	Yes	0	
101	Yes	0	
102	Yes	0	
103	Yes	0	
104	Yes	0	
105	Yes	0	

106	Yes	0	
107	NA	NA	NA
108	Yes	0	
109	Yes	0	
110	Yes	0	
111	Yes	0	

Source: Field Survey MI.

**TABLE- F.2 TLM GRANTS (2006-07)**

Observation	Teachers Grants Received			% of utilization of Teachers grants				
	Yes	No	NA	NA	0%	(1-50)%	(51-75)%	(76-100)%
No. of school	63	17	31	31	53	4	-	8
% of total	56.76%	15.31%	27.93%	27.93%	47.75%	3.60%		7.21%

Source: Field Survey MI.

**TABLE- N.1 STAFF POSITION AT BRC**

Block	No. of post		
	Post sanctioned	Post appointed	Post joined
Gournagar	06	04	04
Kumarghat	06	04	04
Panisagar	06	04	04
Kadamtala	06	02	02
Pechartha	06	02	02
Dasda	06	03	03
Damcharra	06	02	02
Jaimpui	06	00	00
Total	48	21	21

Source: - DPO Office, North Tripura

**TABLE- N.2 STAFF POSITION AT CRC**

Block	No. of post		
	Post sanctioned	Post appointed	Post joined
Gournagar	24	38	38
Kumarghat	24	25	25
Panisagar	21	23	23
Kadamtala	24	22	22
Pechartha	12	11	11
Dasda	27	17	17
Damcharra	12	07	07
Jaimpui	09	07	07
Total	153	150	150

Source: - DPO Office, North Tripura

**TABLE- O.1. SCHOOLWISE CONSUMPTION OF MDM**

SL No	Total Student	1 <sup>st</sup> Visit (no.of std taking MDM)	2 <sup>nd</sup> Visit (no.of std taking MDM)	3 <sup>rd</sup> Visit (no.of std taking MDM)	Average % of std taking MDM
1	179	54	90	90	43.58
2	716	405	432	653	69.36
3	172	35	30	32	18.80
4	91	40	25	20	31.14
5	NA	0	0	0	0.00
6	NA	0	0	0	0.00
7	320	200	189	115	52.50
8	NA	0	0	0	0.00
9	369	166	199	156	47.06
10	418	242	276	242	60.61
11	258	155	142	203	64.60
12	408	151	145	103	32.60
13	359	174	142	142	42.53
14	NA	0	0	0	0.00
15	96	0	0	0	0.00
16	246	171	160	141	63.96
17	NA	0	0	0	0.00
18	88	51	61	60	65.15
19	42	37	34	30	80.16
20	NA	0	0	0	0.00
21	141	49	0	31	18.91
22	207	91	63	0	24.80
23	122	0	0	0	0.00
24	203	0	0	0	0.00
25	159	0	0	0	0.00
26	131	0	0	0	0.00
27	223	0	0	0	0.00
28	307	0	0	0	0.00
29	180	0	0	0	0.00
30	415	117	95	131	27.55
31	135	30	9	14	13.09
32	367	0	0	0	0.00
33	116	0	0	46	13.22
34	243	76	100	12	25.79
35	170	66	68	69	39.80
36	405	157	211	223	48.64
37	442	0	0	0	0.00

38	94	0	0	86	30.50
39	213	0	0	100	15.65
40	89	27	20	35	30.71
41	68	0	0	0	0.00
42	63	46	46	32	65.61
43	54	17	18	21	34.57
44	113	0	0	0	0.00
45	204	0	68	63	21.41
46	225	74	84	93	37.19
47	6	0	0	0	0.00
48	109	0	0	0	0.00
49	109	72	50	0	37.31
50	182	133	0	122	46.70
51	138	0	0	0	0.00
52	202	130	134	150	68.32
53	152	48	46	40	29.39
54	150	0	0	0	0.00
55	93	32	34	38	37.28
56	298	60	120	115	33.00
57	209	0	0	0	0.00
58	94	17	30	26	25.89
59	141	67	50	64	42.79
60	318	96	122	119	35.32
61	NA	NA	NA	NA	#VALUE!
62	86	NA	NA	48	55.81
63	46	37	41	35	81.88
64	224	197	186	114	73.96
65	103	NA	NA	91	88.35
66	195	97	134	132	62.05
67	68	43	43	42	62.75
68	NA	NA	NA	NA	#VALUE!
69	104	35	0	35	22.44
70	261	210	196	187	75.73
71	197	NA	NA	173	87.82
72	296	178	173	111	52.03
73	150	NA	NA	96	64.00
74	184	122	113	105	61.59
75	167	131	0	110	48.10
76	161	92	66	89	51.14
77	71	58	55	24	64.32
78	63	NA	NA	24	38.10
79	85	NA	NA	38	44.71
80	101	0	0	29	9.57

81	164	0	0	0	0.00
82	92	NA	NA	38	41.30
83	511	352	320	339	65.95
84	49	36	42	39	79.59
85	NA	0	0	0	0.00
86	NA	NA	NA	13	#VALUE!
87	334	0	NA	252	37.72
88	218	114	149	79	52.29
89	171	119	126	95	66.28
90	128	0	NA	85	33.20
91	NA	NA	NA	NA	#VALUE!
92	53	43	41	42	79.25
93	71	71	71	65	97.18
94	NA	NA	NA	NA	#VALUE!
95	NA	NA	NA	NA	#VALUE!
96	45	32	30	33	70.37
97	40	29	28	22	65.83
98	134	81	86	92	64.43
99	149	NA	NA	105	70.47
100	290	169	160	161	56.32
101	180	133	139	135	75.37
102	189	0	0	117	20.63
103	147	104	104	83	65.99
104	106	91	65	78	73.58
105	46	38	37	26	73.19
106	191	136	128	84	60.73
107	333	270	236	189	69.57
108	100	NA	NA	0	#VALUE!
109	226	180	179	156	75.96

Source: Field Survey MI.

**TABLE- O.2. CONSUMPTION OF MDM**

<b>Category</b>	Very Poor	Poor	Medium	Good	Very Good
	0%	1%-30%	30%-50%	50%-80%	80%-100%
<b>No. of Observed School</b>	25	14	23	35	5
<b>% of Total Observed School</b>	24.51%	13.73%	22.55%	34.31%	4.90%

Source: Field Survey MI.

\*Total Observed school =102

**TABLE- O.2. FOOD VARIETY OF MDM (Observations are taken from Students)**

SL No	1 <sup>st</sup> Visit	2 <sup>nd</sup> Visit	3 <sup>rd</sup> Visit	Category
1	3	1	2	Good
2	1	1	3	Good
3	1	2	2	Medium
4	1	1	1	Poor

5	0	0	0	Very poor
6	0	0	0	Very poor
7	1	2	3	Good
8	0	0	0	Very poor
9	3	2	2	Good
10	1	3	3	Good
11	2	1	1	Medium
12	1	2	3	Good
13	2	2	1	Medium
14	0	0	0	Very poor
15	0	0	0	Very poor
16	1	2	3	Good
17	0	0	0	Very poor
18	1	1	2	Medium
19	3	1	3	Good
20	0	0	0	Very poor
21	1	0	2	Medium
22	1	3	0	Good
23	0	0	0	Very poor
24	0	0	0	Very poor
25	0	0	0	Very poor
26	0	0	0	Very poor
27	0	0	0	Very poor
28	0	0	0	Very poor
29	0	0	0	Very poor
30	1	1	1	Poor
31	1	3	2	Good
32	0	0	0	Very poor
33	0	0	0	Very poor
34	1	1	3	Good
35	3	3	1	Good
36	1	1	3	Good
37	0	0	0	Very poor
38	0	0	0	Very poor
39	0	0	0	Very poor
40	1	1	1	Poor
41	0	0	0	Very poor
42	2	1	3	Good
43	1	2	1	Medium
44	0	0	0	Very poor
45	0	1	1	Poor
46	1	1	1	Poor
47	0	0	0	Very poor
48	0	0	0	Very poor
49	1	1	0	Poor
50	1	0	1	Poor
51	0	0	0	Very poor
52	1	1	1	Poor
53	1	2	1	Medium
54	0	0	0	Very poor
55	1	1	1	Poor
56	3	2	1	Good
57	0	0	0	Very poor

58	1	1	1	Poor
59	1	1	1	Poor
60	2	2	3	Good
61	1	1	1	Poor
62	1	1	1	Poor
63	1	1	3	Good
64	2	3	1	Good
65	2	1	1	Medium
66	1	1	2	Medium
67	1	0	1	Poor
68	2	3	1	Good
69	1	2	1	Medium
70	1	2	2	Medium
71	1	3	1	Good
72	2	3	1	Good
73	3	0	1	Good
74	2	2	1	Medium
75	2	1	1	Medium
76	1	1	1	Poor
77	1	1	1	Poor
78	0	0	3	Good
79	0	0	0	Very poor
80	1	1	1	Poor
81	3	1	1	Good
82	3	2	1	Good
83	0	0	0	Very poor
84	1	1	1	Poor
85	0	2	3	Good
86	1	1	1	Poor
87	1	1	1	Poor
88	0	1	1	Poor
89	1	1	1	Poor
90	1	1	1	Poor
91	1	1	1	Poor
92	1	1	1	Poor
93	3	2	1	Good
94	1	2	1	Medium
95	1	2	3	Good
96	1	3	1	Good
97	1	2	3	Good
98	0	0	3	Good
99	2	1	1	Medium
100	1	2	3	Good
101	2	1	1	Medium
102	2	3	1	Good
103	1	1	1	Poor
104	1	1	0	Poor
105	3	2	1	Good
106	0	0	0	Very poor
107	1	2	0	Medium
108	1	2	1	Medium
109	3	1	0	Good
110	1	1	0	Poor

Source: Field Survey MI. (Kichuri-1/ Rice with dal & veg.-2/ Rice with egg-3/ not arranged-0)

**TABLE O.4. CLASSIFICATION OF FOOD VARIETY OF MDM**

Observation	Item
Good	Egg given at least in one day out of three visited days.
Medium	Egg not given. Vegetables given in at least one day out of three visited days.
Poor	Egg or vegetables not given. Only kichuri given in at least one day out of three visited days.
Very poor	MDM not given in any day out of the three visited days.

**TABLE- O.5. CLASSIFICATION OF SCHOOLS OF FOOD VARIETY OF MDM**

<b>Category</b>	<b>Very Poor</b>	<b>Poor</b>	<b>Medium</b>	<b>Good</b>
<b>No. of Observed School</b>	29	28	18	35
<b>% of Total Observed School</b>	27.62%	25.45%	16.36%	31.82%

Source: Field Survey MI.

**TABLE-O.6. GENERAL IMPRESSION OF THE ENVIRONMENT**

Issues	Category	Very Good	Good	Fair	Poor
Safety	No. of Observed School	28	62	11	10
	% of Total Observed School	25.23%	55.86%	9.91%	9.01%
Hygiene	No. of Observed School	11	18	19	63
	% of Total Observed School	9.91%	16.22%	17.12%	56.76%
Cleanliness	No. of Observed School	22	17	19	53
	% of Total Observed School	19.82%	15.32%	17.12%	47.75%
Discipline of students	No. of Observed School	23	76	9	3
	% of Total Observed School	20.72%	68.47%	8.10%	2.70%

Source: Field Survey MI.

**TABLE-P.1. NUMBER OF FUNCTIONNING DAYS LAST ACADEMIC YEAR**

SL No	Ideal no. of working days	Actual no. of working days	Variance
1	253	218	35.00

2	253	225	28.00
3	253	235	18.00
4	253	242	11.00
5	253	NA	#####
6	253	NA	#####
7	253	239	14.00
8	253	NA	#####
9	253	245	8.00
10	253	236	17.00
11	253	246	7.00
12	253	236	17.00
13	253	224	29.00
14	253	NA	#####
15	253	237	16.00
16	253	240	13.00
17	253	NA	#####
18	253	236	17.00
19	253	NA	#####
20	253	NA	#####
21	253	237	16.00
22	253	212	41.00
23	253	241	12.00
24	253	247	6.00
25	253	241	12.00
26	253	244	9.00
27	253	238	15.00
28	253	218	35.00
29	253	240	13.00
30	253	239	14.00
31	253	241	12.00
32	253	239	14.00
33	253	244	9.00
34	253	240	13.00
35	253	237	16.00
36	253	241	12.00
37	253	218	35.00
38	253	239	14.00
39	253	253	0.00
40	253	236	17.00

41	253	249	4.00
42	253	242	11.00
43	253	231	22.00
44	253	254	9.00
45	253	210	43.00
46	253	243	10.00
47	253	NA	#####
48	253	239	14.00
49	253	245	8.00
50	253	249	4.00
51	253	246	7.00
52	253	252	1.00
53	253	249	4.00
54	253	211	42.00
55	253	224	29.00
56	253	189	64.00
57	253	231	22.00
58	253	199	54.00
59	253	201	52.00
60	253	176	77.00
61	253	203	50.00
62	253	209	44.00
63	253	209	44.00
64	253	230	23.00
65	253	235	18.00
66	253	241	12.00
67	253	214	39.00
68	253	207	46.00
69	253	196	57.00
70	253	211	42.00
71	253	225	28.00
72	253	212	41.00
73	253	212	41.00
74	253	240	13.00
75	253	231	22.00
76	253	228	25.00
77	253	241	12.00
78	253	223	30.00
79	253	NA	#VALUE!
80	253	212	41.00

81	253	246	7.00
82	253	250	3.00
83	253	193	60.00
84	253	NA	#VALUE!
85	253	NA	#VALUE!
86	253	NA	#VALUE!
87	253	244	9.00
88	253	218	35.00
89	253	214	39.00
90	253	222	31.00
91	253	195	58.00
92	253	250	3.00
93	253	242	11.00
94	253	NA	#VALUE!
95	253	239	14.00
96	253	NA	#VALUE!
97	253	228	25.00
98	253	245	8.00
99	253	244	9.00
100	253	NA	#VALUE!
101	253	239	14.00
102	253	237	16.00
103	253	244	9.00
104	253	245	8.00
105	253	246	7.00
106	253	244	9.00
107	253	217	36.00
108	253	NA	#VALUE!
109	253	254	8.00
110	253	NA	#VALUE!
111	253	NA	#VALUE!

Source: Field Survey MI.

**TABLE-P.2. SCHOOL ENVIRONMENT**

SL No	Teachers Room	Adequate Classroom	Good Flooring	Playground	Proper lighting	Pucca building	Adequate Sitting arrangement	Adequate Blackboard	Adequate Play materials
1	1	1	1	1	1	1	1	1	1
2	1	1	1	1	1	1	1	1	1
3	1	1	0	1	0	1	0	1	1
4	1	0	0	1	0	1	1	1	1
5	1	0	1	0	0	1	0	1	1



59	1	1	1	1	0	1	1	1	1
60	1	1	1	1	1	1	1	1	1
61	1	1	1	1	1	1	1	1	1
62	1	1	1	1	0	1	1	1	1
63	1	0	0	1	0	1	0	0	0
64	1	1	1	1	0	1	1	1	1
65	1	0	0	1	0	1	1	1	0
66	1	0	0	1	1	1	1	1	1
67	1	1	0	1	0	1	1	1	0
68	1	1	1	1	0	1	1	1	0
69	1	1	0	1	0	1	0	0	0
70	1	0	0	1	0	1	1	1	0
71	1	1	1	1	0	1	1	1	1
72	1	1	1	1	0	1	1	1	0
73	1	1	1	1	1	1	1	1	1
74	1	1	1	1	1	1	1	1	1
75	1	1	1	1	1	1	1	1	1
76	1	0	1	0	0	1	1	1	1
77	1	0	0	0	0	1	0	0	0
78	1	1	0	1	0	1	1	1	0
79	1	0	1	1	0	1	0	0	0
80	1	1	1	1	0	1	1	1	1
81	1	0	1	0	0	1	1	1	0
82	1	0	0	0	0	1	0	0	0
83	1	1	1	1	1	1	1	1	1
84	1	0	0	0	0	1	1	1	1
85	1	0	0	0	0	1	0	0	0
86	1	0	0	0	0	1	0	0	0
87	1	1	1	1	1	1	1	1	1
88	1	1	1	1	0	1	1	1	1
89	1	0	1	1	0	1	0	0	0
90	1	1	0	1	0	1	0	0	0
91	1	1	1	1	1	1	1	1	1
92	1	1	1	0	0	1	1	1	0
93	1	1	1	0	0	1	1	1	0
94	1	1	1	0	0	1	1	1	0
95	1	0	0	1	0	1	1	1	1
96	1	1	1	0	0	1	1	1	1
97	1	1	1	1	1	1	1	1	1
98	1	1	0	1	0	1	0	0	0
99	1	1	1	1	0	1	1	1	1
100	1	1	0	1	0	1	1	1	1

101	1	1	1	1	0	1	1	1	1
102	1	1	0	1	0	1	1	1	0
103	1	1	1	1	0	1	1	1	0
104	1	1	1	1	0	1	1	1	1
105	1	1	1	1	0	1	1	1	1
106	1	0	0	1	0	1	0	0	0
107	1	1	1	1	0	1	NA	NA	NA
108	1	1	1	1	1	1	1	1	1
109	1	1	0	1	0	1	0	0	0
110	1	0	0	0	0	1	0	0	0
111	1	1	0	1	0	1	0	0	0

Source: Field Survey MI.

Yes =1 & No =0

**TABLE-P.2.1. SCHOOL ENVIRONMENT**

(A)

	Teachers Room		Adequate Classroom		Good Flooring		Playground		Proper lighting	
	Yes	No	Yes	No	Yes	No	Yes	No	Yes	No
<b>No. of Observed School</b>	111	0	74	37	71	40	72	39	20	91
<b>% of Total Observed School</b>	100%	0.00%	66.67 %	33.33%	63.96%	36.04%	64.86%	35.14%	18.02%	81.98%

Source: Field Survey MI.

(B)

	Pucca building		Adequate Sitting arrangement		Adequate Blackboard		Adequate Play materials	
	Yes	No	Yes	No	Yes	No	Yes	No
<b>No. of Observed School</b>	110	1	75	33	87	21	49	59
<b>% of Total Observed School</b>	99.09%	0.90%	69.44%	30.56%	80.56%	19.44%	45.37%	54.63%

Source: Field Survey MI.

**TABLE-P.3 GENDER WISE STUDENT ATTENDANCE RATE (ONLY PRIMARY SECTION)**

Sl no.	Enrolment		Attendance		Student Attendance Rate (SAR)	
	Boys	Girls	Boys	Girls	SAR (Boys)	SAR (Girls)
1	97	82	52	39	53.61	47.56
2	351	365	226	195	64.39	53.42
3	63	47	17	22	26.98	46.81
4	48	43	17	15	35.42	34.88
5	99	126	57	58	57.58	46.03

6	167	202	64	92	38.32	45.54
7	192	226	107	135	55.73	59.73
8	122	136	96	106	78.69	77.94
9	161	154	51	57	31.68	37.01
10	140	137	74	78	52.86	56.93
11	45	51	19	13	42.22	25.49
12	113	80	75	62	66.37	77.50
13	38	50	25	29	65.79	58.00
14	21	21	14	16	66.67	76.19
15	71	43	21	10	29.58	23.26
16	105	102	5	6	4.76	5.88
17	47	3	11	8	23.40	24.24
18	96	107	0	0	0.00	0.00
19	76	81	0	0	0.00	0.00
20	74	57	1	0	1.35	0.00
21	66	72	4	9	6.06	12.50
22	100	105	39	40	39.00	38.10
23	54	53	0	0	0.00	0.00
24	215	200	57	60	26.51	30.00
25	76	59	10	4	13.16	6.78
26	193	183	70	60	36.27	32.79
27	54	62	19	27	35.19	43.55
28	114	130	21	23	18.42	17.69
2930	94	115	35	39	37.23	33.91
31	182	170	121	128	66.48	75.29
32	204	238	59	46	28.92	19.33
33	50	44	45	41	90.00	93.18
34	97	116	52	48	53.61	41.38
35	42	47	15	21	35.71	44.68
36	38	30	19	8	50.00	26.67
37	29	34	16	13	55.17	38.24
38	26	28	13	8	50.00	28.57
39	63	65	28	35	44.44	53.85
40	121	104	52	42	42.98	40.38
41	63	46	21	11	33.33	23.91
42	70	39	46	38	65.71	97.44
43	84	98	59	63	70.24	64.29
44	68	65	43	40	63.24	61.54
45	104	98	76	75	73.08	76.53
46	75	68	26	17	34.67	25.00
47	43	50	14	18	32.56	36.00
48	150	148	55	60	36.67	40.54
49	109	100	23	14	21.10	14.00
50	44	50	9	17	20.45	34.00
51	72	69	37	27	51.39	39.13
52	154	154	63	61	38.41	39.61
53	55	31	29	19	52.73	61.29
54	28	18	20	15	71.43	83.33
55	112	112	53	61	47.32	54.46
56	59	44	49	42	83.05	95.45
57	110	85	77	55	70.00	64.71
58	34	34	22	20	64.71	58.82
59	58	46	22	13	37.93	28.26

60	130	131	99	89	76.15	67.94
61	99	98	93	82	93.94	83.67
62	162	134	49	62	30.25	46.27
63	90	60	54	42	60.00	70.00
64	100	84	53	52	53.00	61.90
65	84	83	50	60	59.52	72.29
66	85	76	50	39	58.82	51.32
67	39	32	11	13	28.21	40.63
68	32	31	15	9	46.88	29.03
69	42	43	17	21	40.48	48.84
70	54	47	19	10	35.19	21.28
71	88	76	35	47	39.77	61.84
72	50	42	20	18	40.00	42.86
73	251	260	174	165	69.32	63.46
74	24	26	17	22	70.83	84.62
75	181	153	131	121	72.38	79.08
76	102	116	67	65	65.69	56.03
77	86	85	51	44	59.30	51.76
78	70	58	51	34	72.86	58.62
79	24	29	17	25	70.83	86.21
80	28	43	25	35	89.29	81.40
81	18	27	11	22	61.11	81.48
82	21	19	13	9	61.90	47.37
83	74	60	48	43	64.86	71.67
84	83	66	54	51	65.06	77.27
85	162	128	84	77	51.85	60.16
86	90	78	82	53	91.11	67.95
87	100	89	64	53	64.00	59.55
88	80	67	52	31	65.00	46.27
89	66	40	45	33	68.18	82.50
90	25	21	15	12	60.00	57.14
91	101	90	43	40	42.57	44.44
92	176	153	91	96	51.70	62.75
93	52	48	44	44	84.62	91.67
94	125	101	88	68	70.40	67.33
Total	8440	8047	4183	3946	49.56%	49.04%

Source: Field Survey MI.

#### TABLE- P.4 ACHIEVEMENT LEVEL OF CHILDREN

##### TABLE- P.4.1 Bengali Level Test

Examination Type		No. of Students	Total	% of Total
Students can Read story	Boys	51	87	58.62
	Girls	53	95	55.78
	Total	104	182	<b>57.14</b>
Students can Read Para	Boys	15	87	17.24
	Girls	20	95	21.05
	Total	35	182	<b>19.23</b>
Students can Read word only	Boys	7	87	8.05
	Girls	10	95	10.53
	Total	17	182	<b>9.34</b>

Students can Read letter only	Boys	11	87	12.64
	Girls	6	95	6.32
	Total	17	182	<b>9.34</b>
Students can not Read	Boys	3	87	3.45
	Girls	6	95	6.32
	Total	9	182	<b>4.95</b>

Source: Field Survey MI.

**TABLE- P.4.2 English Level Test**

Examination Type		No. of Students	Total	% of Total
Students can Read story	Boys	18	87	20.69
	Girls	20	95	21.05
	Total	38	182	<b>20.88</b>
Students can Read Para	Boys	28	87	32.18
	Girls	19	95	20.00
	Total	47	182	<b>25.82</b>
Students can Read word only	Boys	9	87	10.34
	Girls	19	95	20.00
	Total	28	182	<b>15.38</b>
Students can Read letter only	Boys	25	87	28.73
	Girls	22	95	23.15
	Total	47	182	<b>25.82</b>
Students can not Read	Boys	6	87	6.90
	Girls	16	95	16.84
	Total	22	182	<b>12.09</b>

Source: Field Survey MI.

**TABLE- P.4.3 Mathematics Level Test**

Types	Gender	No. of students	% of Total	Grand Total	% of Grand Total (Out of 182 Students)
Division	Boys	58	66.67	108	59.34
	Girls	50	52.62		
Subtraction	Boys	81	93.10	159	86.36
	Girls	78	82.11		
No. Recognition	Boys	67	77.10	137	75.27
	Girls	70	73.68		
Nothing	Boys	4	4.60	20	10.99
	Girls	16	16.84		
Con do from a question	Boys	47	54.02	99	54.40
	Girls	52	54.74		
Cannot do from a question	Boys	40	45.98	83	45.60
	Girls	43	45.26		

Source: Field Survey MI.

**TABLE- P.5 TRANSITION RATE ANALYSIS**

Name of the School	Dropout		Repeaters		Five year full enrollment		Total
	No. of student	% of student	No. of student	% of student	No. of student	% of student	
Tilla Bazar H.S (+2) School	14	17.28	41	50.62	26	32.10	81
Belkumbari High School	3	13.04	10	43.48	10	43.48	23
Rangrung TE S.B. School	22	39.29	27	48.21	7	12.50	56
Vidyanagar H.S School	12	26.09	10	21.74	24	52.17	46
Pratyekroy H.S School	7	18.42	19	50	11	28.95	37
Sonapur S.B. School	2	5.80	53	76.81	12	17.39	67
Kadamtala H.S School	17	15.32	48	43.24	46	41.44	111
Fulbari High School	9	14.08	47	66.20	14	19.72	70
Madhya Deocharra Nabin S.B School	1	3.45	16	55.17	11	37.93	28
Ganganagar H.S School	19	22.89	57	68.67	7	8.43	83
Kailashar Girls High Shool	1	4.76	2	9.52	18	85.71	21
Nayapara H.S. School	8	16.33	28	57.14	13	26.53	49
Total	115	17.08	358	53.19	199	28.68	672

Source: Field Survey MI.

**TABLE- P.6 CLASSWISE AND GENDERWISE DROPOUT IN**

Name of the School	Class I		Class II		Class III		Class IV		Class V		Grand Total
	B	G	B	G	B	G	B	G	B	G	
Tilla Bazar H.S (+2) School	4	4	2	0	3	0	1	0	0	0	14
Belkumbari High School	1	1	1	0	0	0	0	0	0	0	3
Rangrung TE S.B. School	9	10	1	1	1	0	0	0	0	0	22
Vidyanagar H.S School	5	4	0	1	1	1	0	0	0	0	12
Pratyekroy H.S School	2	0	3	0	2	0	0	0	0	0	7
Sonapur S.B. School	1	0	1	0	0	0	0	0	0	0	2
Kadamtala H.S School	4	3	1	5	2	2	0	0	0	0	17
Fulbari High School	4	1	2	1	1	0	0	0	0	0	9
Madhya Deocharra Nabin S.B School	1	0	0	0	0	0	0	0	0	0	1
Ganganagar H.S School	6	2	3	0	3	2	0	3	0	0	19
Kailashar Girls High Shool	0	0	1	0	0	0	0	0	0	0	1
Nayapara H.S. School	1	2	2	1	2	0	0	0	0	0	8
Total	38	27	17	9	15	5	1	3	0	0	115
% of Total	33.04	23.48	14.78	7.83	13.03	4.34	0.86	2.60	0.00	0.00	100.00

Source: Field Survey MI.

**TABLE- P.7 CASTE/COMMUNITYWISE AND GENDERWISE DROPOUT**

Name of the School	ST		S.C		OBC		General		Total
	B	G	B	G	B	G	B	G	
Tilla Bazar H.S (+2) School	0	0	2	3	0	0	8	1	14
Belkumbari High School	2	1	0	0	0	0	0	0	3
Rangrung TE S.B. School	9	2	2	4	0	3	0	2	22
Vidyanagar H.S School	1	1	3	1	1	4	1	0	12
Pratyekroy H.S School	0	0	5	0	2	0	0	0	7
Sonapur S.B. School	0	0	0	0	0	0	2	0	2
Kadamtala H.S School	0	0	2	3	2	4	3	3	17
Fulbari High School	0	0	0	0	0	0	7	2	9
Madhya Deocharra Nabin S.B School	0	0	0	0	1	0	0	0	1
Ganganagar H.S School	0	0	3	2	6	5	3	0	19
Kailashar Girls High Shool	0	0	0	1	0	0	0	0	1
Nayapara H.S. School	0	0	3	1	2	1	0	1	8
Total	12	4	20	15	14	17	24	9	115
Grand total	16		35		31		33		
% of Grand Total	13.91		30.43		26.96		28.70		100.00

Source: Field Survey MI.

**TABLE- P.8 CLASSWISE AND GENDERWISE REPEATERS**

Name of the School	Class I		Class II		Class III		Class IV		Class V		Grand Total
	B	G	B	G	B	G	B	G	B	G	
Tilla Bazar H.S (+2) School	7	9	11	7	10	13	0	0	0	0	57
Belkumbari High School	1	3	1	1	2	2	0	1	0	0	11
Rangrung TE S.B. School	10	9	3	4	9	4	0	1	0	0	40
Vidyanagar H.S School	1	3	0	0	4	2	0	1	0	0	11
Pratyekroy H.S School	5	1	6	3	12	5	0	0	0	0	32
Sonapur S.B. School	21	26	8	7	8	4	8	2	2	0	86
Kadamtala H.S School	8	11	5	8	11	14	4	6	0	0	67
Fulbari High School	6	9	9	9	11	15	1	3	0	0	63
Madhya Deocharra Nabin S.B School	1	5	1	6	4	5	0	0	0	0	22
Ganganagar H.S School	18	12	13	8	16	11	4	2	4	0	88
Kailashar Girls High Shool	0	1	0	0	0	0	1	1	0	0	3
Nayapara H.S. School	1	6	8	5	0	0	1	1	1	4	27
Total	79	95	65	58	87	75	19	18	7	4	507
% of Total	15.58	18.74	12.82	11.44	17.16	14.79	3.75	3.55	1.38	0.79	100.00

Source: Field Survey MI.

**TABLE- P.9 CASTE/COMMUNITYWISE AND GENDERWISE REPEATERS**

Name of the School	ST		S.C		OBC		General		Total
	B	G	B	G	B	G	B	G	
Tilla Bazar H.S (+2) School	0	0	6	9	0	0	11	14	<b>40</b>
Belkumbari High School	3	6	0	0	0	0	1	0	<b>10</b>
Rangrung TE S.B. School	4	8	6	2	4	0	0	3	<b>27</b>
Vidyanagar H.S School	0	0	4	5	0	0	0	1	<b>10</b>
Pratyekroy H.S School	0	0	9	6	2	1	1	0	<b>19</b>
Sonapur S.B. School	0	0	2	3	1	0	17	30	<b>53</b>
Kadamtala H.S School	0	0	9	17	3	6	7	6	<b>48</b>
Fulbari High School	0	0	1	0	0	0	19	27	<b>47</b>
Madhya Deocharra Nabin S.B School	0	0	0	3	5	8	0	0	<b>16</b>
Ganganagar H.S School	1	0	8	3	21	18	4	2	<b>57</b>
Kailashar Girls High Shool	0	1	0	0	1	1	0	0	<b>3</b>
Nayapara H.S. School	0	0	4	6	3	5	4	5	<b>27</b>
Total	8	15	49	54	40	39	64	88	<b>357</b>
Grand total	23		103		79		152		

% of Grand Total	6.44	28.85	22.23	42.58	<b>100.00</b>
------------------	------	-------	-------	-------	---------------

Source: Field Survey MI.

**TABLE-P.10 TIMES OF REPEATS**

	One time	Two times	Three times	Four times	Five times	Total
No. of students	165	108	63	12	9	357
% of Total	46.22	30.25	17.65	3.36	2.52	100.00

Source: Field Survey MI.

**TABLE-P.11 Gender wise Five Year Full Enrolment**

	Boys	Girls	Total
No. of students	97	102	199
% of Total	48.74%	51.26%	100.00%

Source: Field Survey MI.

