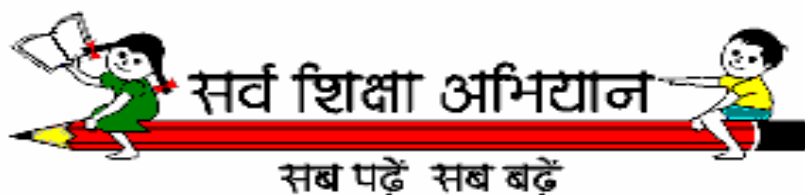


**SECOND HALF YEARLY
MONITORING REPORT OF
UNIVERSITY Of JAMMU
ON SSA
FOR JAMMU & KASHMIR STATE
FOR THE PERIOD
1st October 2006 to 31st March 2007**

DISTRICTS COVERED

Udhampur



**CENTRE FOR ADULT CONTINUING EDUCATION & EXTENSION
(CACE&E), UNIVERSITY OF JAMMU.**

MONITORING REPORT OF

SSA

FOR JAMMU PROVINCE (JAMMU AND KASHMIR)

BY

THE MONITORING INSTITUTE

UNIVERSITY OF JAMMU, JAMMU

FOR THE PERIOD

1st APRIL 2006 TO 31st DEC. 2006

DISTRICT COVERED

Udhampur

INDEX

S,NO.	CONTENT	PAGE NO.
1.	Background and Rationale	
2.	Basic information regarding the District.	
3.	Opening of schools	
4.	Civil Works	
5.	Textbooks	
6.	School Grants	
7.	Teachers and Teachers Training	
8.	Teaching Learning Material (TLM) Grants	
9.	EGS & AIE/NRBC/RBC	
10.	Children With Special Needs (CWSN)	
11.	National Programme for Education of Girls at Elementary level (NPEGEL)	
12.	K.asturba Gandhi Balika Vidyalaya (KGBV)	
13.	District Information System for Education (DISE)	
14.	Research and Evaluation	
15.	VECs functioning in the District	
16.	Staffing at the District Level in the District Udhampur.	
17.	Mid-Day Meal Scheme	
18.	Miscellaneous	

LIST OF TABLES

S.NO.	CONTENT	PAGE NO.
1.1	Basic information regarding District Udhampur.	
1.2	Child Population (6-11 age groups) of District Udhampur.	
1.3.	Child Population (11-14 age groups) of District Udhampur.	
1.4.	Enrolled Children [(6-11), (11-14)] of District Udhampur.	
1.5.	Out of school Children in the Jammu and Kashmir State.	
1.6.	Out of school Children in the District	
2.1.	Schools sanctioned in the current financial year.	
2.2	Schools functioning in the District Udhampur.	
2.3.	VECs view regarding land identification and receiving of funds.	
2.4	Teachers sanctioned in the current financial year.	
3.1.	Targets and progress for Buildings in the District Udhampur. of Jammu Province ending 12/2006.	
3.2.	Targets and Progress of civil works in the District Udhampur.	
3.3	Availibility of water in School	
4.1.	Distribution of free textbooks among children in the District Udhampur.	
5.1.	Schools in primary & upper primary to whom grants are approved for the current financial year to the District Udhampur.	
6.1.	Teachers sanctioned for the new Schools (including	

- spillover) in the current financial year in District Udhampur.
- 6.2. Additional teachers sanctioned in District under SSA in Primary and Upper Primary Schools.
 - 6.3. Teachers in position in Primary and Upper Primary Schools in the District.
 - 6.4. Teachers targeted to be given in service training and teachers actually given training in District Udhampur.
 - 6.6. Teachers targeted to be given training and teachers actually trained in District Udhampur.
 - 7.1 Total no. of teachers eligible to receive TLM grants (SPa).
 - 8.1 EGS Centres functioning in District Udhampur.
 - 8.2 Children targeted to be enrolled and children actually enrolled in Centres.
 - 8.3 Children targeted to be enrolled and children actually enrolled in centres
 - 8.4 EV s working in the District.
 - 9.1 CWSN identified and provided with aids & Appliances during the current financial year in District Udhampur.
 - 9.2 CWSN identified in the District Udhampur.
 - 9.3 Construction of Ramp
 - 10.1 KGBV sanctioned and KGB V operational during the Current financial year in District Udhampur.
 - 11.1 Staffing at the State Level in the District.
 - 11.2 Staffing at the District Level in the District
 - 11.3. Coordinators at District Level

- 12.1 Serving of Mid Day Meals in the Schools.
- 12.2 Satisfaction with Quantity and Quality of Mid Day Meals.
- 12.3 Serving of Meal and Carrying Tiffins in the school.
- 12.4 Arrangement of cook
- 12.5 Category of Coole
- 12.6 Availability of Kitchen in the Schools.
- 12.7 Storage of Food grains in the Schools.
- 12.8 Availability of adequate utensils
- 12.9 Fuel Used in the Schools for Cooking the Mid Day Meals
- 12.10 Environmental Conditions in the Schools.
- 12.11 Encouragement of Children to do things properly in the schools.
- 12.12 Participation of Parents/Local Bodies
- 13.1 Information from School regarding identification of land.
- 13.2 Infrastructure available in the schools.
- 13.3 Nature of Building of school
- 13.4 Material available in the Schools
- 13.5 Children enrolled in schools
- 13.6 Underage and Overage Children
- 13.7 Children dropped out the school.
- 13.8 Children continuing studies.

Schools Visited in District Udhampur

S.NO.	SCHOOLS VISITED	AREA/ZONE	DISTRICT
1	EGS Center Kalara	Reasi	Udhampur
2	EGS Center Katal	Reasi	Udhampur
3	EGS Center Khelater	Reasi	Udhampur
4	EGS Center Dogi Kate	Pouni	Udhampur
5	EGS Center Nayabad	Reasi	Udhampur
6	EGS Center Shatral	Majalta	Udhampur
7	EGS Takoli	Sailjattan	Udhampur
8	EGS Ladyala Garnai	Tikri	Udhampur
9	EGS Sunthan	Jib	Udhampur
10	EGS Bantain	Tikri	Udhampur
11	EGS Center GaraJagir	Pouni	Udhampur
12	EGS Guryal	Ramnagar	Udhampur
13	EGS Khalaytar	Reasi	Udhampur
14	EGS Jambri	Pouni	Udhampur
15	EGS Tringa	Arnas	Udhampur
16	EGS Rumabal Thalla	Arnas	Udhampur
17	EGS Taddar	Chinkah	Udhampur
18	EGS Center Ladalka Garnai	Tikri	Udhampur
19	EGS Center Flora	Reasi	Udhampur
20	EGS Center Upper Inta	Reasi	Udhampur
21	EGS Bhak	Mahore	Udhampur
22	EGS Kund	Mahore	Udhampur
23	EGS Badora	Mahore	Udhampur
24	EGS Lower Bagga	Mahore	Udhampur
25	EGS Punjanra	Chassana	Udhampur
26	EGS Chand	Chassana	Udhampur
27	EGS Gansoli	Chassana	Udhampur
S.NO.	NAMES OF SCHOOLS	AREA/ZONE	DISTRICT
1	U.P.S. Passana	Reasi	

2	U.P.S. Kahna	Pouni	
3	U.P.S. / G.M.S. Battal	Majalta	
4	U.P.S. Upper Garnai	Tikri	
5	U.P.S. Dehari	Ramnagar	
6	U.P.S./ G.M.S. Badyal	Jib	
7	U.P.S. Shiv Nagar	Udhampur	
8	U.P.S. Upper Seela	Reasi	
9	U.P.S. Jari	Pouni	
10	U.P.S. Lehar	Pouni	
11	U.P.S. Kanthan	Arnas	
12	U.P.S. Matlot	Arnas	
13	U.P.S. Salal Kotli	Chinkah	
14	U.P.S. Baldhanoo	Chinkha	
15	U.P.S. Flata	Tikri	
16	U.P.S. Angralla	Mahore	
17	U.P.S. Khara	Mahore	
18	U.P.S. Dhaka	Mahore	
19	U.P.S. Sarh	Mahore	
20	U.P.S. Kund Rahan	Chassana	
21	U.P.S. Chassana	Chassana	
22	U.P.S. Dhamini	Chassana	
23	U.P.S. Majalata	Majalta	

S.NO.	NAME OF THE SCHOOLS	AREA/ZONE	DISTRICT
1	N.P.S Ward No. 13	Reasi	
2	N.P.S Jarh	Jarh	
3	N.P.S Charorta	Majalta	
4	N.P.S Channi	Channi	
5	N.P.S Sudh Ka Dabbar	Ramnagar	
6	N.P.S Ward No.5	Reasi	
7	N.P.S Jardi	Pouni	
8	N.P.S Dawana	Arnas	
9	N.P.S Bareli	Arnas	

10	N.P.S Charak	Chinkah	
11	N.P.S Charak Morh	Chinkah	
12	N.P.S Mohalla Goswami Mand	Tikri	
13	N.P.S Chararh	Chassana	
14	N.P.S Sakaria	Chassana	
15	N.P.S Mussra	Mahore	
16	N.P.S Barni	Mahore	

SARVA SHIKSHA ABHIYAN

BACKGROUND AND RATIONALE

SARVA SHIKSHA ABHIYAN (SSA) is an effort to universalize elementary education by community-ownership of the school system. It is a response to the demand for quality basic education all over the country. The SSA programme is also an attempt to provide an opportunity for improving human capabilities to all children, through provision of community-owned quality education in a mission mode. SSA is the pious initiative of the Govt. of India to achieve the goal of Universalisation of Elementary Education (UEE). It envisages bringing all-out of school, never enrolled and dropped out children in the school. It also aims to bridge all gender and social category gaps at primary stage and at elementary education level.

In few words “Sarva Shiksha Abhiyan means to provide useful and relevant education for all children in the age group of 6-14 years; bridge social, regional and gender gaps, that too, with the active participation of the community in the management of schools”.

Sarva Shiksha Abhiyan realizes the importance of Early childhood Care and Education (ECCE) and looks at the 0-14 age as a continuum. All efforts to support pre-school learning in ICDS areas will be made to supplement the efforts being made by the Department of Women and child Development.

SSA scheme was started in the year 2001-02 (in J&K it was started in 2002-03) with the above mentioned objective i.e. Universalization of Elementary Education. It is an attempt to provide an opportunity for improving human capabilities of all children including the girl child, through provision of community-owned quality in the form of a mission mode. However, SSA has limited financial provisions for girl’s education in the form of “innovations” at district level and free textbooks and thus need was felt for an additional component. Thus, National Programme for Education of Girls at Elementary level (NPEGEL) and Kasturba Gandhi Balika Vidhayalaya Scheme (KGBV) were introduced as an additional support to SSA for education of girls belonging to underprivileged, disadvantaged groups of society and by setting up residential schools with boarding facilities at elementary level respectively.

In achieving the UEE goal of SSA, especially with reference to “participation” and “achievement”; teachers have to play a vital role and a crucial responsibility. For this, they need to have required commitment, motivation, knowledge, skills and accountability to act as effective promoters of UEE.

Teachers working in elementary schools in the country have varied backgrounds, motivation-level, qualification and training. It is necessary that they are all fully oriented in the goal, philosophy and strategy of UEE/SSA and their knowledge and skills are constantly upgraded so that they are able to effectively discharge their rightful role in the UEE/SSA mission. Hence the need to provide regular in-service training to every elementary teacher.

It is against this background that SSA Framework document prescribes, as on the norms, “provision of 20 days in-service course for all teachers each year”.

Under SSA, all the districts of the country are required to develop elementary education plans with emphasis on both primary and upper primary levels of education. SSA envisages a variety of pre-project activities and based upon the outcomes of these activities the districts are supposed to develop its perspective plan. The perspective plan are supposed to be approved at the beginning of the programme and the annual plan at the beginning of each year. Based upon the outcome of the pre-project activities, districts across the country have proposed a number of interventions, which are appraised by the GOI. The appraised missions and plan are approved and accordingly money is released. Some of these interventions are like, opening of new schools, appointment of additional teachers, teaching learning equipment for new schools, school grant, maintenance grant, teacher training, civil works and so on. Since annual plans in most of the districts have already been approved; the focus is shifted to the monitoring of the implementation and the progress made towards the achievement of the SSA goals.

For successful implementation of SSA programme, an effective monitoring system is essential. Monitoring is a mechanism to identify periodically the bottlenecks in implementing the programme and to take remedial measures to improve the effectiveness of the programme, when the programme is still on.

Keeping in view the importance of the programme, a number of provisions are

made in the SSA framework with emphasis on transparent community based monitoring system. In addition to giving the responsibility of monitoring of SSA to various institutions across the respective states, University of Jammu has been identified as an independent monitoring and evaluating agency for Jammu Province. Six Districts of Jammu Province viz Jammu, Kathua, Udhampur, Doda, Poonch and Rajouri are under the preview of Jammu University. The said Monitoring Institute, after completing said work, that too, covering Udhampur, district of the state; prepared the report. It is as follows:-

District Udhampur

Table 1.1 Basic Information regarding District Udhampur:-

No. of Edu. Zones	No. of ZRCs	No. of CRCs	No. of villages	No. of Panchayat	No. of habitations
18	18	144	645	215	3852

Source: DPO, District Udhampur.

Table 1.1 reveals that there were 18 educational zones in the District. Out of Blocks; 1, 4 and were categorized as urban, mixed/semi urban and rural zones. Zonal resource Centres (ZRCs and Cluster Resource Centres (CRCs) were 18 and 144 respectively in the district. There were 645 villages covered by 215 Panchayats and included 3852 as its habitation.

Table.9.3.depicts that total 332 aids & appliances which included 101 hearing aids, 72 crutches, 53 spectacles, 52 shoes, 31 tri-cycles and 23 wheel chair were distributed among eWSN in the District. No difficulty was faced in providing the aids to CWSN. None of the CWSN was provided Home -based care in the District. 1188 Parents of CWSN were given counseling. According to SPO, SSA; counseling had been done by every zone at their level and officers concerned were able to provide the information. According to DPO, Udhampur. 6 resource teachers had been identified

so far and they were trained at CRC Srinagar.

According to SPO, SSA; no resource teacher has been identified in the District and office had also not worked with any NGO for CWSN. Office had no guidelines to be issued to the resource persons. Zone of the CWSN was provided with home based support during the current financial year.

No, doubt, there were the NGOs in the District who are associated with CWSN on their own basis but According to DPO, Jammu, no NGO had been associated with CWSN as they were not working directly or indirectly in collaboration with each other.

District has an IED coordinator who has attended 3 days workshop on capacity building at Srinagar in Sept. 2005.

To be updated with information from SPO.

VECs functioning in the District

According to DPO, Udhampur. there were total 1253 Village level Education Committees in the District and 1 women member was associated with the VEC that means there were 1253 women associated in the VEC of the schools in the District.

No copy of the guidelines on delegation of powers to VEC was available with them and no Guidelines were given on adequate representation to women in VEC to them.

Meetings of the VEC members were not held frequently and less no of members remain present in meeting when it was being convened by them. Women members were also showed minimal participation in the VEC except 17% of the women members who were very much keen in functioning of schools.

34% of the VEC members were oriented and the oriented members had attended two day training programme conducted for them in their District.

None of the Committee members was maintaining record of funds received by them and it was maintained by one of the teachers of the respective schools who also acted as a convener.

According to SPO,SSA; there were 2 in-charge programme officers for the community mobilization: 1 for Kashmir Division & other for Jammu Division and both of them were aware about their role.

Table 1.2. Child Population (6-11 age groups) of District Udhampur.

Urban		Rural		Rural and Urban	
Total	7548	Total	93954	Total	101502
Male	4304	Male	49516	Total Male	53820
Female	3244	Female	44438	Total Female	47682

Source : DPO, District Udhampur.

Table 1.2 depicts that there were overall 101502 children in the age group of 6-11 years, including both urban and rural children in the district; out of which 53820 and 47682 were male and female respectively comprised of both urban as well as rural children.

Table 1.3. Child Population (14 age groups) of District Udhampur.

Urban		Rural		Rural and Urban	
Total	234	Total	19992	Total	20226
Male	131	Male	10485	Total Male	10616
Female	103	Female	9507	Total Female	9610

Source : DPO, District Udhampur.

Table 1.3 depicts that there were overall 20226 children in the age group of 11-14 years, including both urban and rural children in the district; out of which 10616 and 9610 were male and female respectively comprised of both urban as well as rural children.

Table 1.4. Enrolled Children [(6-11), (11-14)] of District Udhampur.

Enrolled (6-11)		Enrolled (11-14)	
Total	125116	Total	45917
Male	66993	Male	27017
Female	58123	Female	18900

Source : DPO, District Udhampur.

Table 1.4 reveals that out of the total 125116 enrolled children in the age group of 6-11 years, there were 66993 male and 58123 female in the district. On the other hand, out of the total 95917 enrolled children in the district, in the age group of 11-14 years, there were 27017 male and 18900 female children.

Table 1.5 Out of school children in the Jammu and Kashmir State.

Out of school (6-11)		Out of school (11-14)	
Total	7293	Total	4200
Male	3025	Male	1743
Female	4268	Female	2457

Source : SPO, SSA, Jammu.

Table 1.5 depicts that out of total 7293 children out of school in the age group of 6-11 years, 3025 were male and 4268 were female whereas out of 4200 children who were out of school of age group (11-14yrs), among them 1743 were male and 2457 were female in the district.

Table 1.6 Out of school children in the District.

Out of school (6-11)		Out of school (11-14)	
Total	7293	Total	4200
Male	3025	Male	1743
Female	4268	Female	2457

Source : SPO, SSA, Jammu.

Table 1.5 depicts that out of total 7293 children out of school in the age group of 6-11 years, 3025 were male and 4268 were female whereas out of 4200 children who were out of school, among them 1743 were male and 2457 were female in the district.

OPENING OF SCHOOLS

Table 2.1. Schools sanctioned in the current financial year.

School Sanctioned	
EGS	
1. Current financial year	-
2. Spill Over	-

NPS	
1. Current financial year	27
2. Spill Over	-
UPS	
1. Current financial year	30
2. Spill Over	-

Source : SPO, SSA, Udhampur.

Table 1.2 reveals that no Elementary Guarantee Scheme (EGS) Centre were sanctioned where as, and 30 Upgraded Primary School (UPS) and 27 Newly opened Primary School (NPS) in the district in the current financial year and there was no spillover in all.

Table 2.2 Schools functioning in the Udhampur.

Schools		
EGS Functional	NPS	UPS/MS
973	376	321

Source : DPO, District Udhampur.

Table 2.2 depicts that there were 973 EGS Centres, 376 Newly opened Primary Schools and 321 Upgraded Primary Schools in the District.

Table 2.3. VECs view regarding land identification and receiving of funds.

View	Land Identification		Received funds for construction	
	No.	%age	No.	%age
Yes	20	44	20	44

No	24	53	25	55
Not Relevant	1	2.12	-	
Total	45	44%	45	

Source : SPO, SSA, Jammu.

Table 2.3 reveals that 44% of the respondents viewed that land had been identified and they had received funds for the construction of schools. 53% of the respondents revealed that land was not identified and in case of 55% of the respondents, identification of land was not relevant as they had been functioning in their own accommodations.

Table 2.4 Teachers sanctioned in the current financial year.

Sanctioned till 2005-06		In position	Sanctioned 2006-07	
			Against new schools	Additional Teachers
Primary Schools	7084	7084	NA	NA
Upper Primary	7836	7836	NA	NA

Source : SPO, SSA, Udhampur.

Table 2.4 depicts that 7084 and 7836 teachers were sanctioned for primary and upper primary schools respectively during 2005-06 and the said no. of teachers was in position in the specified schools in the state. No. of teachers sanctioned during the current financial year in the state is not available.

CIVIL WORKS

Table 3.1 Targets and progress for buildings in the district Udhampur of Jammu Province ending 04/2007.

Building	District Jammu	
	Target	Completion
PS	441	171
ACR	611	295
BRC	10	8
CRC	70	61
UPS/MS	79	18

Source : SPO, SSA, Udhampur

Table 3.1 reveals that it was targeted to build 441 primary schools (PS), 611 Additional Class Rooms (ACR) 10 Block Resource Centres (BRC) and 70 Cluster Resource Centre's (CRC) and 79 Middle School (MS) building was set and out of which and 171 primary schools(PS), 295 Additional class rooms (ACR), 8 Block resource centre (BRC), 61 Cluster resorce centres (CRC), and 18 Upgrade primary schools (UPS/MS) was completed respectively in the district Udhampur.

Personnel designated for Technical Supervision for Civil Works :
Block/District/Sub District.

Executive Engineer

Assistant Engineer

Junior Engineer

Personnel Incharge of Civil Works at SPO level-Engineering Person, any other.

Executive Engineer

Frequency maintained by him for reviewing the progress of Districts.

Monthly and quarterly

Steps taken by SPO to ensure quality in civil works

Monitoring by technical staff, construction of building as per type design.

Table 3.2 Target and Progress of civil works in the district Udhampur.

Progress of Civil Works (2006-07)										
Component	Target	Completed	Slab casted	Lintel Level	Plinth Level	Layout given	Layout required	Land paper awaited	Land not available	Land Dispute
PS Building	441	171		25	65					
Addl. Class Room	611	295		37	74					
UPS Building	79	18		7	18					
CRC Buildings	70	61		6	1					
BRC Building	10	8		0	0					

Source : DPO, District Udhampur.

Table 3.2 depicts that it was targeted to build 441 Primary Schools (PS), 661 Additional Class Rooms (ACR) and 79 Upgraded Primary School (MS)

buildings 10 Block Resource Centres and 70 Cluster Resource Centre's building was set were targeted out of which 171 Primary Schools (PS), 295 Additional Class Rooms (ACR) and 18 Upgraded Primary School (MS) buildings 8 Block Resource Centres and 61 Cluster Resource centers were completed.

Table 3.3 Availability of Water in the Schools.

Water Availability	No.	%
Y	35	53
N	31	46.9
Total	66	

Table 3.3 depicts in 53% of the schools water facility was available whereas 46.9 % of the schools had no permanent water facility in the schools in the district.

TEXT BOOKS

Table 4.1 Distribution of free text books among children in the district Udhampur.

	District
Books	98427

Source : SPO, District Udhampur.

Table 4.1 reveals that 98427 books were distributed among children free of cost in the district.

SCHOOLS GRANTS

Table 5.1 Schools in primary and upper primary to whom grants are approved for the current financial year to the district Udhampur.

	District Udhampur	
	School	Grant
Total	1660	

Source : SPO, SSA, Udhampur.

Table 5.1 reveals that under school grants, amount to the tune of ... lac was given to the schools in the district and the said fund was released in the month of August 2006. Grant was given to 1660 schools in the district.

According to DPO, grant @ Rs. 2000/- has been released to 1660 schools in the district and it was released on 31.08.2006.

24% of the schools were not utilizing it according to the guidelines of SSA as observed by the Monitoring institute and the teachers revealed it was due to the lack of proper information at their disposal.

TEACHERS AND TEACHERS TRAINING

Table 6.1 Teachers sanctioned for the new schools (including spillover) in the current financial year in district Udhampur.

No. of Teachers	U
889	

Source : SPO, SSA, Jammu

Table 6.1 reveals that 889 teachers were sanctioned in the district for new schools in the current financial year and they were in position.

Procedure followed in recruitment of teachers.

Panel of qualified candidates in their respective areas is submitted by VEC to ZEO for engagement.

Table 6.2 Additional teachers sanctioned in district under SSA in primary and upper primary schools.

School	No.
Primary	776
Upper Primary	175

Source : DPO, District Udhampur.

Table 6.2 depicts that only 776 teachers were sanctioned in primary schools and no teacher was sanctioned in 175 upper primary under SSA in the district.

Table 6.3 Teachers targeted to be given in the service training and teachers actually given training in district Udhampur.

	District	
	U	
No. of Teachers	Target No.	Actual No.
	5078	3537

Source : SPO, SSA, Udhampur.

Table 6.3 reveals that 5078 teachers were targeted to be given in service training whereas 3537 were given training actually in the district.

Venue of Training

District HQs, Zonal Headquarters and Cluster Centres

Supervision/monitoring system to check the quality of training

**Coordinator Pedagogy, DRG pedagogy, DIET and SIE
Supervision/Monitoring the Training**

Table 6.4 Teachers targeted to be given refresher training of 60 days and teachers actually given the said training in the District Udhampur.

	District	
	J	
No. of Teachers	Target No.	Actual No.
	1094	1094

Source : SPO, SSA, Udhampur.

Table 6.4 depicts that 742 teachers were targeted to be given refresher training of 60 days and all them were given the said training in the district.

Mode of the said training : (institutional/distance) Venue of training.

Distance Mode

IGNOU STUDY CENTRES

Table 6.5 Teachers targeted to be given training and teachers actually trained in district Udhampur.

Teachers			
Target No.	5078	Actual No.	3537

Source : DPO, District Udhampur.

Table 6.5 reveals that 5078 teachers were targeted to be given in service training whereas 3537 teachers were given training actually in the district.

According to DPO, untrained teachers were still left to be uncovered in the district and all untrained teachers are being provided CPT/DPT through IGNOU, Jammu in phased manner.

Table 6.6 Venue and duration of training provided to teachers in district Udhampur.

Venue	Duration of Training
Zonal Headquarters	20-30 Days

Source : DPO, District Udhampur.

Table 6.6 depicts that teachers were given training of 20 days at their respective zonal headquarters.

TEACHING LEARNING MATERIAL (TLM) GRANTS

Table 7.1 Total No. of teachers eligible to receive TLM grants (SPO).

No. of Teachers	5718
------------------------	-------------

Source : SPO, SSA, Udhampur.

According to SPO, SSA, Jammu, including teachers of Jammu District, there were 5718 teachers in the Jammu Province who are receive TLM grant.

EGS & AIE/NRBC/RBC

Table 8.1 EGS Centres functioning in District Udhampur.

Total EGS Centres	EGS Closed	EGS Functional
362	48	314

Source : DPO, District Udhampur.

Table 8.1 reveals that there were total 362 EGS Centres, out of which 48 were closed and only 314 were functioning in the district.

According to SPO, SSA, no Centre including EGS, AIE Centres, NRBC, RBC and school camps in the district were sanctioned under SSA.

Table 8.2 Children targeted to be enrolled in the centres.

Centres	No. of Children
EGS	1478
AIE	-
NRBC	1345
School Camps	-
Total	-

Source : SPO, Udhampur

Table 8.2 reveals that 1478 and 1345 children were targeted to be enrolled in the EGS and NRBCs respectively in the district.

Table 8.3 Children targeted to be enrolled and children actually enrolled in centres.

Enrolled	No.
Targeted	2823
Actual	1775

Source : DPO, District Udhampur.

Table 8.3 reveals that 15000 children were to be targeted and 10593 were actually enrolled in the centres in the district.

EGS centres were using school text books and no other material was used by them. Children had received free text books in all subjects taught to them and in this context, 143034 children received free text books.

Table 8.4 EVs working in the district.

EVs	No.
In Position	1172
Trained	1172

Source : DPO, District Udhampur.

Table 8.4 depicts that there were total 386 EVs who were working in the district and all the EVs were trained.

District Coordinator for EGS : Yes

Monitoring Format available with DPO on which SPO takes information regarding EGS : No

Frequency of furnishing information to SPO : Half yearly and whenever asked

EGS upgraded : Nil

CHILDREN WITH SPECIAL NEEDS (CWSN)

Table 9.1 CWSN identified and provided with aids and appliances during the current financial year in district Udhampur.

	District	
	U	
No. of CWSN	No. Identified	Given Appliances
	648	62

Source : SPO, SSA, Udhampur.

Table 9.1 depicts that 648 children with special needs were identified and 62 were provided with appliances in the district.

Table 9.2 CWSN identified in the district Udhampur.

CWSN	No.
Visual	191
Hearing	130
Ortho	251
Learning	142

Multiple	215
Total	648

Source : DPO, District Udhampur.

Table 9.2 reveals that 648 CWSN were identified in the district, out of which 251 were orthopedically. Handicapped and 215 were having multiple disabilities.

Table 9.3 Construction of Ramp

Table 9.3 Ramp constructed I the schools

Ramp	No.	%age
Constructed	12	18.1
Not Constructed	54	81.8
Total	66	

Table 9.3 reveals that in 18.1 % of the schools, ramp was constructed whereas in case of 81.8 % of the schools, it was not constructed in the schools in the district.

**NATIONAL PROGRAMME FOR EDUCATION OF GIRLS AT
ELEMENTARY LEVEL (NPEGEL)**

According to SPO, SSA, no cluster was targeted in the district and no model cluster was made functional in the district. Gender coordinator was not in position in the district.

KASTURBA GANDHI BALIKA VIDAYALAYA (KGBV)

Table 10.1 KGBV sanctioned and KGBV operational during the current financial year in district Udhampur.

	District	
	U	
No. of KGBV	Sanctioned	Operational
	51	0

Source : SPO, SSA, Udhampur.

Table 10.1 reveals that no KGBV was sanctioned in the district and so no KGBV is operational.

Staffing at the State and District Level in the District

Table 11.1 Staffing at the State Level in the District.

Staff	No.
State Project Director	1
State Coordinators	7
Field Officer	1
Senior Assistant	1
Programmer Officer	1
Accounts Officer	1
Executive Engineer	2
Accountant	1
Senior Auditors	2
Programmer	2

Steno typist	5
Junior Assistant	2
Data Entry Operator	2
Driver	3
Machine Operator	1
Orderly	16
Chowkidar	2
Total	50

Source: SPO, SSA, Udhampur

Table 11.2 reveals that there were total 50 members at the State level Office of SSA. All were in position.

Table 11.2 Staffing at the District Level in the District.

Staff	No.
DRGs	6
Programmer	5
Assistant Engineer	5
Junior Engineer	5
Data Entry Operator	19
Total	40

Source: SPO, SSA, Udhampur.

Table 11.1. depicts that there were total 40 members of staff at the District level Office of SSA. All were in position.

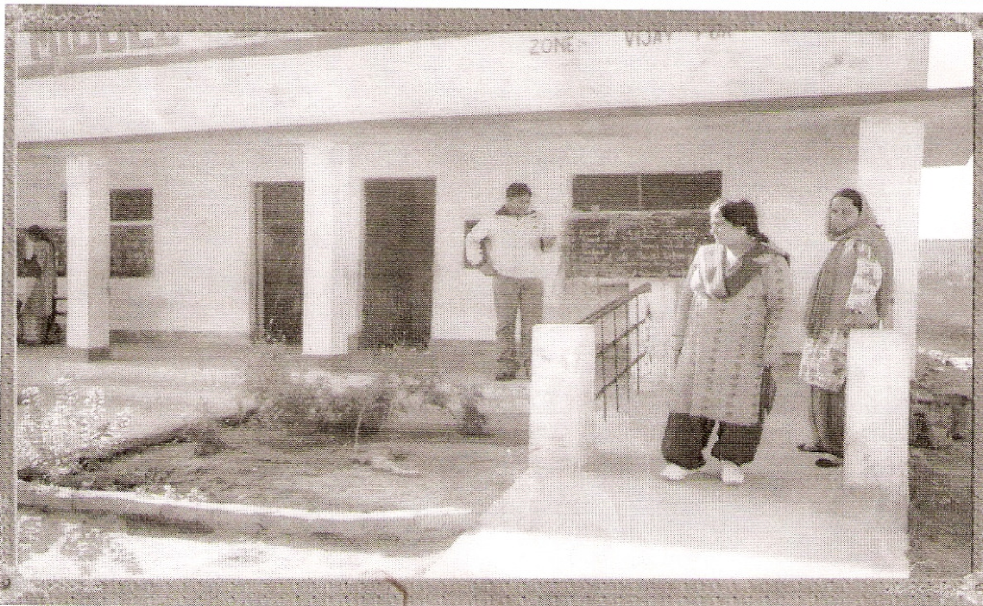
Staffing at the District Level in the District Udhampur.

Table 11.3. Coordinators at District Level

Coordinators	No.
EGS	1
Pedagogy	1
EMIS	1

SFG	1
Civil works	1
Gender	Nil
Total	5

Source: DPO, District Udhampur.



luring the
luring the

Table 11.3 reveals that there were total 6 position for coordinators at District Level out of which one position was vacant and no action was taken till the office was visited by the ML. There was no helper, no Chowkidar in the District.

Mid-Day Meal Scheme

Table. 12.1. Serving of Mid Day Meals in the Schools.

Schools Serves MDM	No.	%
Daily		
Y	61	92
N	5	8
Total	66	

Table 12.1 reveal that 92 %of the schools were serving the meals daily to the student whereas 8 % o the schools were no serving the meals daily to kids in the schools in District Udhampur. Same food was not served everyday, no doubt rice wee served but it was mixed with vegetables including dal, potato, cauliflower, peas and other seasonal vegetables. Neither fruit nor egg served to children in the meal at the schools.

Table 12.2 Satisfaction with Quantity and Quality of Mid Day Meals.

Satisfaction	Quantity(MDM)		Quality (MDM)	
	No.	%	No.	%
Satisfied	60	90.5	59	90
Not satisfied	6	9.5	7	10
Total	66		66	

Table 12.2 depict that in 90.5 % and 90% of the schools children were satisfied with the quantity and quality of meals respectively whereas 9.5% and 10%of the schools children were not satisfied with the Mid Day Meal served to them in the schools in the District as they should also be provided with other things as they at their home like-rice and sabji, dal and chawal, rajma and chawl separately.

Children were not provided with any of the micronutrients including iron, folic & vitamin-A dosage and deworming medicines at schools.

Table12.3 Serving of Meal and Carrying Tiffins in the school.

Serving of MDM	MDM		Carry Tiffin	
	No.	%	No.	%
Y	60	90.5	15	23

N	6	9.5	51	77
Total	66		66	

Table 12.3 reveals that 90.5 % of the schools were serving the meals daily to the student whereas 9.5 % of the schools were not serving the meals daily to kids in the schools in District Udhampur. In 23% of the Schools children were also bringing the Tiffins whereas in 77% of the schools were not bringing the Tiffin along with them in the schools.

Table 12.4 Arrangement of cook

Cook	No.	% age
Y	62	93
N	4	6.2
Total	66	

Table 2.4 reveals that I 71% of the schools, there was arrangement of cook for preparing the Mid Day Meal for children whereas in case of 28% of the schools, no cook was there in the schools to cook the meals for children and in that case children used to prepare on their own.

Table 12.5 Category of Cook

Category	No.	% age
SC	10	15
ST	9	13.6
Gen	9	13.6
Nil	30	45
Total		

Table 12.5 depicts that in case of 15 %of the schools, cook belonged to SC category; in 13.6 % of the schools, cook were from ST category; in 13.6 % of schools, cook belonged to general category and in case of 57.5 % of the schools, cook did not belong to any category as there was no cook in 12.5 % of the schools in the district. Monthly remuneration of the cook was 500/-and payment was not regular.

Table 12.6 Availability of Kitchen in the schools.

Kitchen available	No.	%
Available	36	54.5
Not available	30	45.4
Total	66	

Table 12.6 depicts that in 54.5% of the schools kitchen was not available and they were preparing the Mid day Meals in the open, that too, under the clear sky and in case of just 45.4% of the schools, they were cooking the meal inside the classroom in the schools in District Udhampur.

Table 12.7 Storage of Food grains in the Schools.

Storage of food grains	No.	%
Store	30	45.4
Within classroom	36	54.5
Total	66	

Table 12.7 reveals that 54.4% of the schools had no separate space for storing the food grains, in the school and they were storing them within the classroom and that too, in jute bags whereas in case of 84% of the schools separate space, store, was available in the school for the said purpose in the District.

Table 12.8 Availability of Adequate Utensils

Adequate Utensils	No.	% age
Y	31	46.9
N	35	53
Total	66	

Table 12.8 reveals that 46.9 % of the schools have adequate utensils for the Mid Day meals whereas 53% of the schools did not have adequate utensils in the schools.

Table 12.9 Fuel used in the Schools for Cooking the Mid Day Meals.

Fuel used	No.	%
Firewood	55	83.3
LPG	11	16.6
Total	66	

Table 12.9 reveals that in 83.3% of the reveals of the schools firewood was used as a fuel to cook the meal and in 16.6% of the schools LPG was a fuel to prepare the meal in the schools in the District.

Table 12.10 Environment Conditions in the schools.

Environment	Safety		Hygiene		Classroom		Discipline	
	No.	%	No.	%	No.	%	No.	%
Fair	8	12	6	7	5	7.5	10	15
Poor	5	6	3	4.5	4	6	2	3
Good	42	63	47	71	49	74.2	42	63
V. Good	11	16.6	10	15	8	12	12	18.1
Total	66		66		66		66	

Table 12.10, depicts that in 12% of the school, environment was fairly safe and in only 16.6 % of the school’s environment was very good. In 71 % of the schools, the environment conditions were hygienically good and in 15 % of the schools environmental condition was very good. In 74.2 % of the schools cleanliness of the environment was good whereas it was very good in only 12 % of the schools. In 18.1 % of the schools students were very disciplined whereas in case 3 % of the schools in the District, discipline among the students was poor.

Table 12.11 Encouragement of children to do things properly in the schools.

Encouraged	Wash hands		Take & Eat properly		Conserve water		discrimination	
	No.	%	No.	%	No.	%	No.	%
Y	62	93.9	60	90	48	72	-	-
N	4	6	6	9.09	18	27.2	66	100
Total	66		66		66			

Table 12.11 reveals that in 93.6 % of the schools, children were encouraged to wash hands before taking meals and to take and et meal properly whereas in 6 % the schools, children were neither encouraged to wash hands before meals nor to take and eat meal properly. In 72 %of the schools children were encouraged to conserve water whereas in case of 27.2 % of the schools children were not encouraged to do the same. None of the schools was resorting to any sort of discrimination on the basis of caste, gender, disability as in all the schools children were served the meal at time and children also took their meal altogether.

Table 12.12 Participation of the local bodies

Participation	V.Good		Good		Fair		Poor	
	No.	%	No.	%	No.	%	No.	%
Daily Supervision of MDM	31	46	46	69	40	27.2	39	59
Contribution	24	36.3	15	22.7	16	24.24	15	22.7
Any other	11	16.6	5	6	10	15	12	18.8
Total	66		66		66		66	

Table 12.12 depicts that in of the schools, parents/local bodies/VEC contributed, which schools got money and material required for the construction for the construction/repair of the schools. In case of 46 % of the schools, VEC members came to school whenever they were called upon to come to school. In 36.3 % of the schools, parents and other members of the local bodies contributed by supervising the MDM proramme organized in the schools in their respective areas. The programme was also inspected by the CRPs as they visited the schools and enquired about the details concerning the said programme.

Miscellaneous

Table 13.1 Information from School regarding identification of land.

Land identified	No.	%age
Identified	32	48
Not identified	33	50
Not relevant	1	1.5
Total	66	

Table 13.1 depicts that in case of 44% of schools land was identified but no construction was started; whereas in case of 53% of the schools land was not

identified; it was not relevant in case of 2.12 schools as they were already accommodating themselves in their own buildings.

Tab13.2 Infrastructure available in the schools.

Infrastructure available	Good building		Good classroom		Playground		Light	
	No.	%	No.	%	No.	%	No.	%
Y	23	34.8	30	45	26	39.6	25	37.8
N	43	65	36	55	40	60	41	62
Total	66		66		66		66	

Table 13.2 depicts that 34.5 % and 45 % of the schools had good building and good classroom respectively whereas 65% and 55% of the schools had have no good building and classroom, where as, 60% of schools do not have good playgrounds, 38% schools had arrangement for light, on the other hand 62% of the schools had no provision for light in the District.

Table 13.3 Nature of Building of school

Building	No.	%age
Rented	22	22
Own	35	53
Court case	4	6
Panchayat	4	6
Nil	1	1.5
Total	66	

Table 13.3 reveals that in 53% of the schools were functioning n their own building, 22% were functioning in rented accommodation, 6% of the schools were functioning in the open and 6% of the schools were functioning in the building of Panchayat.

Table 13.4 Material available in the Schools.

Infrastructure available	Blackboard		TLM		Play material	
	No.	%	No.	%	No.	%
Y	47	71	40	60	19	28.7
N	19	28	26	40	47	71
Total	66		66		66	

Table 13.4 reveals that 71% of the schools had blackboard and 28% of the schools had no blackboard in the school. 60% of the schools had TLM in the schools whereas 40% of the schools had no TLM in the schools and revealed that it is placed somewhere else rather than at school as they had no sufficient space in the school to keep them in the school 28.7% of the schools had play material for children in the schools and it was also utilized by the children whereas 71% had no material in the school for children in the schools in the District. No health camp was organized in any of the visited schools in the District.

Table 13.5 Children enrolled in schools.

Children	Enrolled		Actually Present	
	No.	% age	No	% age
10-50				
50-100	26	39	24	36.3
100-150	20	30.3	30	45
150-200	20	30.3	12	18.7
200-250				
Total				

Table 13.5 depicts that 39 % of schools have children enrolled from 50-100, 30.3 % schools have 100-150 children enrolled, 30.3 % schools have children enrolled from 150-200. 36.3 % of schools have 50-100 children present, 45% of schools have 100-150 children present and 18.7 % schools have 150-200 children present and no school have 10-50 and 200-250 children enrolled.

Table 13.6 Underage and Overage Children.

Children	Underage		Overage	
	No.	%age	No.	%age
1	-	-	-	-
2	-	-	10	22
3	-	-	-	-
Nil	-	-	-	-
Total	-	-	-	-

Table 13.6 reveals that 100% of the schools had no underage child in the school whereas 18% of the school had at least 1 overage child in the school, ... of the schools had 3 overage children in the schools in the district.

Table 13.7 Children dropped out the school.

Children	Drop out	
	No.	%age
0-2	-	-
2-4	-	-
4-6	12	26
Nil	-	-
Total	12	

Table 13.7 depicts that in 12% of the schools 2-9 children dropped out from the school and in 74% of the schools, no child dropped out from the school and the reasons revealed for this by the school authorities included migration and return to native place by the child.

Table 13.8 Children continuing studies.

Continuing Studies	No.	%age
Continuing	-	-
Not Continuing	-	-
Don't Know	-	-
Total	-	-

Table 13.8 reveals that children of the schools were aware that dropped out children can continue their studies and it was revealed that dropped out children are not continuing their studies and .

**CENTER FOR ADULT CONTINUING EDUCATION AND
EXTENSION.
UNIVERSITY OF JAMMU**

ANNEXURE 1

INFORMATION TO BE PROVIDED BY SPD OFFICE JAMMU

District

	U	P	R	D
Opening of schools				
(I) No. of schools sanctioned:				
1) Current financial year.				
2) Spill over.				
NPS (Upgradation of EGS to PS)				
1) Current financial year				
2) Spill over				
(If not sanctioned, give the details with regard to previous years).				
(II) No. of schools opened (from among the sanctioned). EGS				
NPS				
UPS				
(III) No. of teachers sanctioned for the new schools in the current financial year.				
1) New teachers				
2) Spill over.				
(IV) Has sanctions been issued for these? Yes/no.				
(V) If any guidelines are issued by SPO or DPO for utilization of grants given to schools				

for TLM and one time grant? (Provide copy).				
---	--	--	--	--

CIVIL WORKS:

(I) targets (including spillover) for the schools buildings, additional classrooms, drinking water, toilets, BRCs/CRCs and other items like rainwater harvesting etc. for the current financial year.

(II) Progress of civil works till the previous quarter.

(III) Personnel designated for technical supervision for civil works.

(Format for reviewing the progress of civil works of Districts).
--

(IV) convergence with Swajaldhara & Total Sanitation Campaign (TSC) taking Place in respect of drinking water Facilities provided in schools.

(V) quantum of funds utilized from Swajaldhara and TSC and SSA in The sites.
--

(VI) convergence with TSC in respect of toilet facilities in schools.

(VII) quantum of funds available from TSC and SSA in sites.

(VIII) personnel Incharge of Civil works at SPO level-Engineering

person, any other.

(IX) format and frequency maintained by him for reviewing the progress of Districts.

(X) steps taken by SPO to ensure Quality in civil works.

(XI) Is there any Third party evaluation? (Give details).

	U	P	R	D
TEXT BOOKS 1) No. of children to whom free Textbooks are distributed in the Province with reference to:				
SC ST Girls (II) a Category of children receiving free Textbooks from SSA funds.				
(III) Total No. of schools in primary & upper primary to whom grants are approved for the current financial year.				

SCHOOL GRANTS, TEACHERS AND TEACHERS TRAINING

	U	P	R	D
I) Total No. of schools to whom grants are approved for the current financial year. a. Primary schools. b. Upper primary schools.				
(II) Funds released to districts-when?				
(III) School grants received by the Schools within two months of Opening.				
(IV) Guidelines issued to schools on how to utilize this Grant (Provide Copy of guidelines).				
(V) a. No. of additional teacher sanctioned under SSA in primary schools. b. No. of additional teachers sanctioned under SSA in upper primary schools.				
(VI) No. of teachers in position therein.				
(VII) Mode of recruitment of teachers & the level authority.				
(VIII) Procedure followed in the Recruitment of teachers.				
(IX) Nature of appointment of teachers: Regular appointment/contract basis.				
(X) Target no. of teachers to be given In service training.				

(XI) Actual no. of teachers given Training.				
Training calendar for teachers training.				
(XII) Venue of training.				
(XIII) Content and module for Training. (Enclose copy)				
(XIV) Personnel prepared content and module.				
(XV) Personnel appointed as trainers.				
(XVI) Personnel trained the trainers.				
(XVII) Supervision/monitoring system to check the quality of training.				

Target no. of newly recruited teachers To be given orientation training of 30 days.
Actual no. of teachers given such Training.
Venue of training.
Personnel as master trainer & For how many days?
Monitoring done for ensuring The quality of training.
Target no. of teachers to be given Refresher training of 60 days.
Actual no. of teachers given Said training.

Mode of said training: (institutional/distance)
Venue of training.
Module and content of training.
Personnel prepared it.
Personnel as trainers.
Sort of supervision/monitoring Done for the training.

(V) No. of untrained teachers still left to be covered.
What is SPO Planning about them?
(VI) a. Does the SPO have a quality Coordinator? Yes or NO. If yes what Is their role?
(VII) Does quality coordinator has a system & format to review District wise Programmes. If yes, give details.
(VIII) What is the frequency of review of performance.
(IX) What is the arrangement for coordination with SCERT and DIETs. (explain).
Total no. of teachers eligible to Receive TLM grants.
Give details of grants released To the districts.

EGS & AIE/NRBC/RBC

(I) Sanctioned No. of (district wise)
EGS
AIE Centres
NRBC
RBC
School Camps.
(II) No. sanctioned centers started.
EGS
AIE Centres
NRBC
RBC
School Camps.
(III) No. of centres which-----
RBC
School Camps
(IV) Targets No. of children to be enrolled in the centres category wise.
EGS
AIE Centres
NRBC
RBC
School Camps.
No. of EGS/AIE Centres (including Spillovers) targeted to be upgraded During the current financial year.
Achievement so far.
SPO issued necessary instructions

To the DPOs with reference to Upgradation of EGS centres to Primary schools.
Funds released for the same.
No. of EGS centres actually upgraded.
Details of funds transferred to VEC.
NO. of teachers sanctioned for the new Upgraded EGS to primary schools.
Teachers put in position in these New schools.
Teachers in position.
(V) No. of children actually mainstreamed in :
Private school Govt. Aided Schools. Govt. Schools.
(VI) Difficulties experienced in mainstreaming the students.
(VII) Are EGS/AIE centres using: textbooks or/and other materials.
In case, using other material. (Give details).
(VIII) Has Children received free textbooks in all subjects taught to them. (Specify no.)
(IX) Date of release of textbooks
Is there any delay in supply of books? (Books should be supplied with in a week of Starting of the centre).

Reason for the delay.
<p>CWSN</p> <p>(I) No. of CWSN identified during the current financial year. (Enclose copy Specifying CWSN disability wise)</p>
<p>(II) No. of CWSN enrolled during the Current financial year. (Enclose copy Specifying CWSN disability wise)</p>
<p>(III) No. of children provided with aids & Appliances during the current financial Year. (Enclose copy specifying Distribution of aids acc. To disability)</p>
<p>(IV) No. of resource teachers identified. (Enclose copy specifying Resource persons, disability wise)</p>
<p>(V) List of NGOs associated with CWSN. (Enclose copy giving the details of NGOs District-wise)</p>
<p>(VI) Details of guidelines issued for the Resource teachers/NGOs. (Enclose copy.)</p>
<p>(VII) No. of children provided home based Support during the current financial year.</p>
<p>(VIII) No. of parents given counseling during the current financial year.</p>

NPEGEL

(I) No. of clusters targeted to make functional during the current financial year.

(II) No. of model cluster schools actually made functional during the current financial year.

(III) Target No. of additional classrooms, Drinking water, toilet & electrification Sanctioned in model clusters during The current financial year.

(IV) Present status of construction.

(V) Model clusters provided with any of the following in any of the Districts.
Gender Sensitization
Teaching learning materials,
Vocational training,
Bridge courses
Gender sensitization to teachers &
Additional efforts to mobilize community &
Women's groups in favour of girl's education.

(VI) Funds have been released for NPEGEL Programme in time.

(VII) Quantum of funds released for above said programme.

(VIII) Date of release of funds for the said programme.

(IX) Monitoring format to check progress

of girls education interventions has been developed in State SSA Programme. (enclose copy)
(X) Periodicity with which it is reviewed?
(XI) No. of ECCE centres operational under Innovation Funds for NPEGEL
(XII) Frequency with which the information is furnished to SPO.
KGBV
No. of sanctioned District-wise
No. of KGBV operational during the Current financial year.
(I) No. of KGBV in respect of which land have been identified.
(II) Has State drawn up detailed guidelines? For running the KGBV Schools.
(Enclose copy)
(III) No. of KGBV in respect of which all formalities have been completed.
EMIS
EMIS has been set up in each District Of the State.
Requisite computers and computer Operator have been put in position.
Time schedule drawn up for DISE/ EMIS for the current year.
CRC/BRC coordinators have been

Given task of verifying 5% of the Data collected.
Coordinators have been oriented/ Trained for this.
Manner they are discharging their Responsibility.
(IV) SPO engaged independent/third party verification of data.
(V) If so, give details of independent/ Third party verification of data. Including findings. (enclose copy)
Data collected & compiled by DPO Passed on to the State well in time i.e. by November.
(VI) Any MIS in charge at State level. Fully conversant with the needs of SSA.
(VII) No. of activities attended by the above said: personnel.
Workshops Trainings In GOI/ NIEPA.

RESEARCH AND EVALUATION

(I) No. of Research to be undertaken During the current financial year.
Actual no. of research sanctioned.
No. of studies sanctioned in the Previous calendar year.
(II) No. of studies completed which were Sanctioned in the previous calendar year. (Enclose copy). If not completed enclose copy Specifying Status till date)
Personnel Incharge of research/ Evaluation at SPO level.
(III) Role of State Coordinator who is incharge of Research/Evaluation at SPO level.
(IV) System of coordination on research Issue both SCERT/SIEMAT/ DIETs etc.
(V) Any State Level Committee for the purpose. (If yes give details of the members in the committee and frequency of meetings held along with the copy of minutes.
(VI) Any prescribed contract format For Commissioning of Research (Enclose copy).

STAFFING AT STATE AND DISTRICT LEVEL

(I) Is there any incharge Programme Officer for community mobilization/ Participation at SPO level.
Is the person aware of his/her role?
What type of monitoring or capacity Building is done.
(II) Total NO. of staff sanctioned category Wise in the state office under SSA.
(III) No. in position.
(IV) Action taken to fill up the vacancies.
Are there specific Programme Coordinators for quality/pedagogy/ Training. Gender and girls education; Civil works; inclusive education; EGS /AIE interventions; financial management; Research evaluation; MIS; Planning and Community mobilization/participation.
How many functional areas have been Given to each programme Coordinantor.
Are all Programme Coordinators Oriented and Knowledgeable about Their tasks.
No. of meetings of the general body And EC held during the previous Financial year.

(V) Total NO. of staff sanctioned category wise in the district office.
(VI) No. in position.
(VII) Action taken to fill up the vacancies.
(VIII) No. of BRCs/CRCs sanctioned.
(IX) Staffing position.
(X) Action taken to fill up the vacancies.
(XI) Does SPO have clearly laid down Rules/regulations for filling up Posts of SSA. (enclose copy of Details).

Signature:

Name and designation of the officer from SPD office:

Annexure II

Centre for Adult Continuing Education & Extension (CACE&E)

University of Jammu

Jammu

INFORMATION TAKEN BY DPO OFFICE DISTRICT

Basic information

No. of Edu. Zones

(Enclose copy of map)

Nature of Zones urban/rural/tribal

No. of Urban Zones (Mention names).....

.....

No. of rural zones (mention names):

.....

No. of tribal zones (mention names):

.....

No. of BRCs

No. of CRCs

No. of villages

No. of Panchayat.

No. of habitations

Child Population

Urban

Female
Male
Urban (Total)

Rural

Female
Male
Rural (Total)

Total (R&U)

Total Female
Total Male
Total (R&U)

Child Population (11-14 age group)

Urban

Female
Male
Urban (Total)

Rural

Female
Male
Rural (Total)

Total (R&U)

Total Female
Total Male
Total (R&U)

Enrolled (6-11), Enrolled (11-14)

Enrolled (6-11)

Female
Male
Urban (Total)

Enrolled (11-14)

Female
Male
Urban (Total)

Out of School Children (6-11) and (11-14)

Out of School children (6-11)

Female
Male
Total

Out of School children (6-11)

Female
Male
Total

Reason for out of school children with their specific No. for each Reason.

Out of school children elaborate reasons along with specifying no. of children falling within the preview of each reason **(Enclose copy)**

(1) No. of schools sanctioned

EGS

1) Current financial year

2) Spill over

NPS

1) Current financial year

2) Spill over

UPS

1) Current financial year

2) Spill over

(If not sanctioned, give the details

With regard to previous years:- { EGS sanctioned Spill

Over (EGS)

NPS sanctioned Spill over (NPS)

UPS sanctioned Spill over (UPS)})

(II) No. of schools opened (from among the sanctioned during the current financial year).

EGS

NPS

UPS.....

(if not opened, give the details

with regards to schools opened during previous years, including spillover)

EGS

NPS

UPS.....

Has the land for the construction of the schools been identified?

Whether VEC/SMC etc. have received any funds for the schools?

Has the construction started and what is the stage of construction (foundation, lintel and roofing etc.) ?

Have teachers been put in position in new schools in district?

Whether any guidelines have been issued either by SPO and or DPO for the items to be provided for the new schools under this grant?(copy of circular/order and copy of instructions).

What are the targets (including spillover) for construction of school buildings, additional classrooms, drinking water, toilets, BRCs/CRCs and other items, like rain water harvesting etc. for the current financial year?

What is the progress till the previous quarter? (**enclose copy**).

Who is designated for technical supervision for civil works? What level:-
Block/District/Sub-District?

Is there any convergence with Swajaldhara and Total Sanitation Campaign (TSC) taking place in respect of drinking water facilities provided in the schools?

What is the quantum of funds utilized from Swajaldhara and TSC and SSA in the sites?

Is there any convergence with Total Sanitation Campaign (TSC) taking place in respect of toilet facilities in the schools?

What is the quantum of funds available from TSC and SSA in the sites?

What is the total No. of children in the district to whom textbooks are distributed with a particular reference to :

SC

ST

GIRLS

Which category of children is receiving free textbooks from SSA funds?

Which category of children is receiving free textbooks from State Govt. funds?

When were the textbooks actually received and distributed in the District? Any instruction/circulars received from the SPO office in this respect? (**Enclose copy of circular/instruction**)

Is there any delay in the distribution of the textbooks (textbooks are to be distributed within one month of opening of the schools)?

If there was delay, what were the reasons for the delay?

Indicate the **date of distribution of textbooks** in the district?

Indicate the **date of opening of schools** in the district?

What is the total No. of schools in the District in primary to whom school grants are approved for the current financial year?

What is the total No. of schools in the District in upper primary to whom school grants are approved for the current financial year?

Have these funds released to the district if so when (**Date of release of funds**) (the school grants are to be received by the school within two months of opening)?

Whether any guidelines have been issued to the schools on how to utilize this grant? (**enclose the copy of guidelines**).

Whether the DPO has released funds for school grants @Rs.2000/-per school to the school NEC/SMC accounts, if so when?

What is the No. of schools to whom releases@Rs.2000/- per school have been made?

Has the DPO made centralized purchases for schools out of the school grant? If so, for what purpose and what is the amount utilized?

What is the additional No. of teachers Sanctioned in District under SSA in primary schools?

What is the additional No. of teachers Sanctioned in District under SSA in upper primary schools?

What is the No. of teachers in position therein?

What is the mode of recruitment of the teachers?

What is the level/authority (DPONEC etc.), which recruits are teachers?

What is the procedure followed in the recruitment of teachers?

What is the nature of appointment of teachers' i.e. regular appointment or contract basis?

If VEC/Panchayat etc. is empowered to make decentralized recruitment of teachers; whether for such recruitment procedure have been laid down?

What is the level of satisfaction amongst local community of such recruitment?

What is the target No. of teachers in district to be given in service training?

What is the actual No. of teachers given such training in the district?

Is there a training calendar for teachers training? (Enclose Copy)

What was the venue for the training?

What is the content and module for the training ? (Enclose Copy)

Who prepared the content and module for the training?

Who were the trainers?

What was the supervision / monitoring system to check quality of these trainings ? Give details

Is there a regular system of getting feedback from teachers? What is that ?
(Enclose Copy)

What is the target No. of newly recruited teachers in the district, to be given orientation training of 30 days?

What is the actual No. of teachers given such training?

What was the venue of the training?

For how many days the training was given?

Who were the Master Trainers?

What was the monitoring done for ensuring quality of the training? (Give details with proper monitoring framework and enclose copy of format)

What is the target No. of teachers in the District to be given refresher training of 60 days?

What is the actual No. of teachers given such training?

What was the mode of training:-institutional or Distance?

What was the venue of the training?

What was the module and content of the training and who prepared it? (Enclose copy)

What supervision or the monitoring was done for the training? **(Give details with proper monitoring framework and enclose copy of format)**

How many untrained teachers are still left to be covered in the district?

what is the SPO's planning for it?

What is the total No. of teachers eligible to receive TLM grants in the district?

Give the details of grants released to the district?

At what **date the TLM grant was released** from DPO?

What is the No. of teachers covered under TLM grant?

Whether any instructions have been issued in respect of utilization of TLM grants by DPO/SPO?

What is the No. of centres sanctioned and opened, category wise:-

CENTRES	SANCTIONED	OPENED	FUNCTIONING
----------------	-------------------	---------------	--------------------

EGS

AIE

NRBC

RBC

School Camps

What is the No. of such centres which were continued from previous years (show Separately)?

CENTRES	No.
----------------	------------

EGS

AIE

NRBC

RBC

School camps

What is the target No. of children to be enrolled in the centres category wise in the District ?

CENTRES	No.
----------------	------------

EGS

AIE
NRBC
RBC
School camps

What is the No. of children actually enrolled in the centres category wise in the District?

CENTRES	No.
EGS	
AIE	
NRBC	
RBC	
School camps	

What is the No. of EVs working in the District ?

What is the No. of EVs trained ?

What kind of training was given to EV s?

Indicate the duration of training?

By whom training was given (DIET/BRC/CRCINGO)?

What was the content and module used for the purpose training? (Enclose copy)

Are they appropriate?

What is the EV s feedback on the training? (Specify details an enclose copy of feedback format).

Whether the EV s are given academic support by the BRC/CRC regularly?

In that, what sort of support is provided to EV s?

What is the frequency of such academic support?

Whether any instruction has been issued by DPO on it? (Copy of instructions).

Whether there is any designated District Coordinator for EGS/ AIE in the district?

Whether that Coordinator has been oriented?

Has the person received any capacity building training conducted by SPO? Give details about when, where, how many times etc.?

Is there any monitoring format available with DPO on which SPO takes information regarding EGS/ AIE centres operating in the district? (Enclose copy)

What is the frequency with which information is furnished to the SPO?

What is the No. of EGS/ AEI centres/(including spillovers) targeted to be upgrading in the district during the current financial year?

What is the achievement so far?

Whether SPO has issued necessary instructions to the DPOs with reference to the upgradation of EGS centres to primary schools ,Yes /No.

If yes, what are those instructions? (**Enclose copy**)

If yes, whether funds have been released for the same? (**give details of funds released including date, amount, no. of schools**)

What is the No. of EGS centre actually upgraded in the district?

Give the details of funds transferred to VEC and details of instructions in respect to upgraded EGS Centres (**enclose copy of guidelines**)?

Has the land for construction of upgraded primary school (from EGS) been identified?

What is the No. of teachers sanctioned for the new upgraded (from EGS) primary school?

Have teachers been put in these new schools?

Are the teachers in position?

What is the No. of children actually mainstreamed from EGS/ AIE centres/courses during the last academic year?

Whether the mainstreaming has been done in: (**tick the relevant**)

Private school

Govt. aided school

Govt. school?

What is the no. of children which has been mainstreamed in below mentioned schools in the District?

School

no. of children

Private school

Govt. aided school

Govt. school?

What sorts of difficulties were experienced by you in mainstreaming of students?
Elaborate.

Whether EGS/AIE centres are using: (tick the relevant)

The school textbooks or/and

Any other materials?

If using other materials, specify the details of those learning materials?

If textbooks, whether the children have received free textbooks in all subjects taught to them?

Give the details regarding the no. of children provided textbooks in the District
(Enclose copy)

Whether there was any delay in supply of books (books should be supplied within a week of starting of the centre) and reasons for delay?

Date of distribution of books

What is the No. of CWSN children identified in the district? (Enclose copy showing their no. separately depending upon the type of disability).

What is the No. of said children enrolled during the current financial year? (Enclose copy showing their no. separately depending upon the type of disability).

What is the No. of children who had been provided with aids and appliances in the district during the current financial year? (Enclose copy showing their no. separately depending upon the type of disability).

Whether there are any difficulties in getting the aids and Appliances? Specify?

What is the no. of resource teachers identified in the district?

List the NGOs associated with CWSN in the district? (Enclose Copy)

What are the guidelines issued for the resource teachers IGOS? (Copy of guidelines)

Whether the district has an IED coordinator? Whether he has been oriented and whether he has attended any capacity building Programme at the State level?

How many schools has been provided with ramps?

How many children have been provided home based support during the current financial year?

How many parents have been given counseling during the current financial year?

What is the No. of clusters targeted in the district and the No. of model clusters actually made functional during the current financial year?

-

What is the target No. of additional classrooms, drinking water, toilet and electrification. Sanctioned during the current financial year?

What is the present status of above said construction? (enclose copy)

Whether model clusters in the district have been provided with gender sensitized teaching learning materials, vocational training, bridge courses, and gender sensitization to teachers and additional efforts to mobilize community and women's groups in favour of girls education ? (enclose copies with reference to the said activities).

Whether funds have been released for NPEGEL Programme in time

What is the quantum of funds released and the date of release of funds?

Whether a district gender coordinator is in position?

Whether a monitoring system to check progress in girls education interventions, has been developed in SSA Programme and with what periodicity is it reviewed? (enclose copy of monitoring format).

What is the No. of ECCE centres operational under Innovation Head funds (Rs.15 lakhs for girls education) arid') of NPEGEL in the district?

Whether the State has prescribed any monitoring format for this activity?(Enclose copy of format)

What is the frequency with which the information is furnished to SPO?

What is the No. of KGB V in the district and mention date of opening zone-wise/block- wise?

What is the No. of KGBV operational during the current financial year?

What is the No. of KGBV in the district in respect of which land has been identified?

Whether the State has drawn upon detailed guidelines for running the KGBV schools?

What is the No. of KGBV in respect of which all formalities for construction have been completed? If not completed, give details and mention reasons.

What is the No. of Posts sanctioned for the KGBV (teachers and other staff) in the district?

What is the present position of filling up of these posts?

What is the No. of KGBVs started in the district?

Whether EMIS has been set up in your district?

Whether requisite computers and computer operators have been put in position?

Whether data capture format have been supplied to all schools latest by August?

Whether any training has been imparted to the teachers for filling up data in the data capture format?

Whether CRC/BRC coordinators have been given task of verifying 5% of the data collected?

Have they been oriented/trained for this?

How are they discharging this responsibility?

Has the SPO also engaged independent/third party verification of data? If so, **please give details, including findings?**

Whether the data collected and compiled by DPO was passed on to the State well in time i.e. by November?

What is the No. of research to be undertaken during the current financial year in the district?

What is the actual No. of research actually sanctioned during the current financial year?

What is the No. of studies sanctioned in the previous calendar year and the No. of them completed?

What is the Total No. of village/school level/management committees constituted in the district?

Whether a copy of guidelines on delegation of powers to VEC/SMC has been issued and whether these guidelines are available with them?(copy)

Whether guidelines have been given on adequate representation to women in VEC/SMC? (enclose **copy of guidelines**)

What is the actual No. of women associated in the VEC of the school?

Whether members of the VEC have been oriented and the percentage of the members oriented?

When these trainings were held?

Who conducted the trainings?

What is the VECs perception of the trainings?

Whether VEC is maintaining proper record of funds received by them?

Annexure III

PROFORMA FOR SCHOOL
SCHOOL:EGS Centre/Newly
Opened/Upgraded School under SSA

Name

(School):.....

Date

(Establishment):.....

Area/Zone:.....

District:.....

Head/In charge/Principle:.....

.....

.....

Name of the

Investigator.....

.....

Q.1. Has the land for construction of the school been identified?

Ans.

Q.2. Whether VEC has received any funds for construction of the school?

Ans.

Q.3. Has the construction started and what frames the stage of construction?

- a) Foundation
- b) Lintel
- c) Roofing

Q.4. Whether construction of drinking water facilities in schools is being done by a specialized agency or VEC?

Ans.

Q.5. In the school buildings beings constructed, whether a ramp is being constructed?

Ans.

Q.6. How many times the technical person visited the construction site and guided the construction process?

Ans.

Q.7. Have you received any sort of training:

- a) In service
- b) 30 days
- c) 60 days
- d) any other(specify).

Q.8. Are you satisfied with training?

Ans.

Q.9. If not satisfied, whether there are any areas, in which you would like to get training?

Ans.

Q.10. Whether any academic support is given by BRC/CRC to you, how frequently?

Ans.

Q.11. What sort of role they play in teacher training and tasks they are responsible for?

Ans.

Q.12 What is the expected number of visits to be made by BRC/CRC?

Ans.

Q.13. Whether any innovative steps have been taken by BRCCs/CRCCs to improve teacher performance and children's learning?

Ans.

Q.14. When do you receive TLM grant and how you have utilized it?

Ans.

Q.15. Whether TLM materials are displayed in the classrooms or kept separately?

Ans.

Q.16. What is the nature of TLM and are children using them as well or not?

Ans.

Q.17. Are there any good example?

Ans.

Q.18. If good example, name the teachers and what is the nature of his/her TLM?

Ans.

Q.19. Have the teacher received any training on TLM development and use?

Ans.

Q.20. If so when? Where? And what was the duration?

Ans.

Q.21. Who were the trainers?

Ans.

Q.22 Was there cross sharing and demonstration of good practices amongst teachers done?

Ans.

Q.23. Whether school has been provided with ramps?

Ans.

Q.24. How many parents have been given counseling during the current financial year?

Ans.

Q.25. What is the number of CSWN children started to be enrolled and what is the actual number present in the school?

Ans.

Q.26. Whether school is daily serving hot cooked meal?

Ans.

Q.27. Whether same food is served everyday or there is variety?

Ans.

Q.28. What are the food items being served?

Ans.

Q.29. Whether green vegetables are being added in meal?

Ans.

Q.30. Whether fruit, eggs etc. are being served?

Ans.

Q.31. Whether children are given micronutrients(iron, folic acid and vitamin-A dosage) and deworming medicine periodically?

Ans.

Q.32. Who administers these medicines and at what frequency?

Ans.

Q.33. Is the cook/helper is a underprivileged person?

Ans.

Q.34. What is the monthly remuneration of the cook and helper?

Ans.

Q.35. Is the payment regular?

Ans.

Q.36. Whether utensils used for cooking are adequate?

Ans.

Q.37. What is the extent of participation by parents/VECs/Panchayat/Urban bodies in regard to:

	V.Good	Good	Fair	Poor
a) Daily supervision of MDM Programme
b) Contribution in Cash/Kind
c) Any other matter

Q.38. Whether the programme is being inspected regularly? If Yes by whom and with what periodically?

Ans.

Q.39. If there is low attendance then what are the reasons for the same?

Ans.

Q.40. Whether steps have been taken by the school and VEC/SMC/PTA to promote attendance?

Ans.

Q.41. What is the number of children dropped out of school previous six months?

Ans.

Q.42. Whether they are continuing studies in any private school?

Ans.

Q.43. What is the number of children retained in the same class from previous year?

Ans.

Q.44. What is their number?

Ans.

OBSERVATION SCHEDULE

Q.1. Whether the school is daily serving the hot cooked meal?

Ans.

Q.2. Whether the same food is served everyday or there is variety?

Ans.

Q.3. What are the food items being served?

Ans.

Q.4. Whether green vegetables are being added in the meal/

Ans.

Q.5. Whether fruits, egg etc. are being served?

Ans.

Q.6. Whether children are happy with

View	Y	N
1) Quality of meal
11) Quantity of meal

Q.7. Reasons if children are not happy?

Ans.

Q.8. Whether children are given micronutrients(iron, folic acid, vitamin-A dosage) and deworming medicine periodically?

Ans.

Q.9. Who administers these medicines and at what frequency?

Ans.

Q.10. What is the percentage of children who took MDM _____ children who carried their Tiffin from home?

Took MDM

Carry Tiffin

Number of children

Q.11. Who is cooking and serving the meal?

- a) Cook/helper appointed by the department
- b) Self Help Group
- c) NGO
- d) Contractor
- e) Any other(Youth Club)

Q.12. Whether a pucca kitchen shed is available? If not, then where food is being cooked?

Ans.

Q.13. Whether food grains and other food items stored at safe place and where?

Ans.

Q.14. Whether potable water is available for cooking and drinking purpose?

Ans.

Q.15. What is the kind of fuel used?

- a) Gas based
- b) Firewood

Q.16. What is the general impression of the environment with particular reference to the following-

Impression

Very Good

Good

Fair Poor

- a) Safety
- b) Hygiene
- c) Cleanliness
- d) Discipline among
Student

Q.17. Whether children are being encouraged to encouragement

Y N

- a) Wash their hands before and after the consumption of MDM
- b) Take and eat meal in an orderly manner
- c) Conserve water while washing dishes
- d) Was any discrimination(of caste/gender/disability) observed

Q.18. Whether the school has

- a) Clean environment
- b) Good building
- c) Play ground
- d) Good classrooms with proper flooring
- e) Roof and windows
- f) Proper lighting
- g) Sitting arrangement for children
- h) Blackboard
- i) TLM materials

Q.19. Whether the school has adequate play material for the children? Is it used?

Ans.

Q.20. What sort of rapport the children having with the teachers?

Ans.

Q.21. Whether the school has following children?

Children	No	%age
----------	----	------

Under age		
-----------	--	--

Over age		
----------	--	--

Annexure IV

PROFORMA FOR VEC

Has the land for the construction of the schools been identified?

Ans

Whether VEC/SMC etc. have received any funds for the schools?

Ans

Has the construction started and what is the stage of construction(foundation, lintel and roofing etc.)?

Ans

In the schools, whether one time grants of Rs. 10,000- for teaching and learning equipments at primary level and Rs. 50,000 per schools at upper primary level have been received by you?

If yes, what items have been purchased for schools?

Sample check of civil works to verify actual status by visiting the construction site and variance; if any to be indicated).

Whether VEC/SMC has been trained by technical persons for execution of civil work?

Whether community manual for civil works has been and is available wit VEC/SMC?

In the school buildings being constructed (new schools as well as buildings less schools), whether a ramp is being constructed?

What is the No. of times, the technical person visited the construction site and guided the construction process?

Did he visit at the foundation stage, lintel and roof stage?

Is there any convergence with Swajaldhara and Total sanitation Campaign(TSC) taking place in respect of drinking water facilities provided in the schools?

What is the quantum of funds utilized from Swajaldhara and TSC and SSA in the sites?

Whether construction of drinking water facilities in schools is being done by:

A specialized agency

VEC/SMC

Is there any convergence with Total Sanitation Campaign(TSC) taking place in respect of toilet facilities in the schools?

What is the quantum of funds available from TSC and SSA in the sites?

What is the actual date of receiving school grants by school/VEC and utilization of the grants?

Whether there was any delay in the receipt of grants?

Specify the utilization details(percentage of utilization and items) for the last year's school grants received by the school/VEC?

If VEC/Panchayat etc. is empowered to make decentralized recruitment of teachers; whether for such recruitment procedure have been laid down?

What is the level of satisfaction amongst local community of such recruitment/

What is the No. of teachers sanctioned for the schools?

What is the No. of teachers in position?

What is the No. of teachers present in the school on the visit?

What are the names of the teachers absent on the day of visit?

Whether any teacher is habitual absentee?

How is the rapport between children and the teacher in the school visited?

Whether EV is regular in his attendance?

Whether the actual upgradation of EGS centers has taken place?

Has the land for construction of the upgraded primary schools(from EGS) been identified?

Whether VEC?SMC etc. have received any funds for construction of schools?

Has the construction started and what is the stage of construction:

Foundation

Lintel

Roofing

What is the infrastructure available in the EGS/AIE centres, such as

Durries, blackboard, books, TLM etc.?

Whether mid day meal is being supplied to the children in EGS/AIE center/courses, on the date visit? Gender-wise details be given?

Children

No. of Enrolled

No. of Present

No. of Male Children

No. of Female Children

How many schools have been provided with ramps?

How many parents(of CWSN and others) have been counseling during the current financial year?

What is the No. of CWSN children stated to be enrolled and actually present in the schools/EGS centres?

No. stated to be enrolled

No. actually present

What is the frequency of meeting of VEC as per guidelines?

What are the actual dates of meeting of the committee during the six months preceding the visit?

What is the total No. of members of VEC?

How many are attending the meeting regularly/

Whether women and SC/ST members of these bodies participate regularly in the meeting?

When these training was held?

Who conducted the trainings?

What is the VEC's perception of the trainings?

What sort of contribution is made by VEC in improving:

The environment of the school

Enrollment

Attendance of teachers

Attendance of students

Whether VEC is maintaining proper record of funds received by them?

SCHOOL RECORDS

No. of days school functioned during the last year.....

Whether health camp facility was made available to the children during the previous six months.....

Number of children enrolled in the school.....

Number of children actually.....

Present process of assessing the achievement level of students

.....

Whether continuous and comprehensive evaluation and grading system has been introduced for students.....

Number of children, if any:

Children	Number
----------	--------

Underage	
----------	--

Overage	
---------	--

Number of children dropped out of school previous six years.....

Number, continuing their studies in any school/private schools.....

Number of children retained in the same class from the pervious year.....

Their percentage.....

Monthly remuneration of the cook and helper.....

Whether same food is served everyday or there is variety.....

Food items being served.....

Whether greens are being added.....

Whether fruit, egg etc. being served.....

whether children are given micronutrients(iron, folic acid, vitamin-A dosage) and

deworming medicine periodically.....

Personnel administers.....